



Front dimensions: \varnothing 28 mm
Panel cut-out: \varnothing 22.3 mm
Front bezel height: 2 mm
Travel: 2.3 mm/1.8 mm



SHORTTRON-Zwischenbau

 Product configurator



Shortron® base-plate mounting

MADE IN GERMANY



Ø 22.3 mm

About Us

→ Pushbuttons and Switches

Panel Mount Jacks

Emergency-Stop Buttons

Bus Technology

RFD

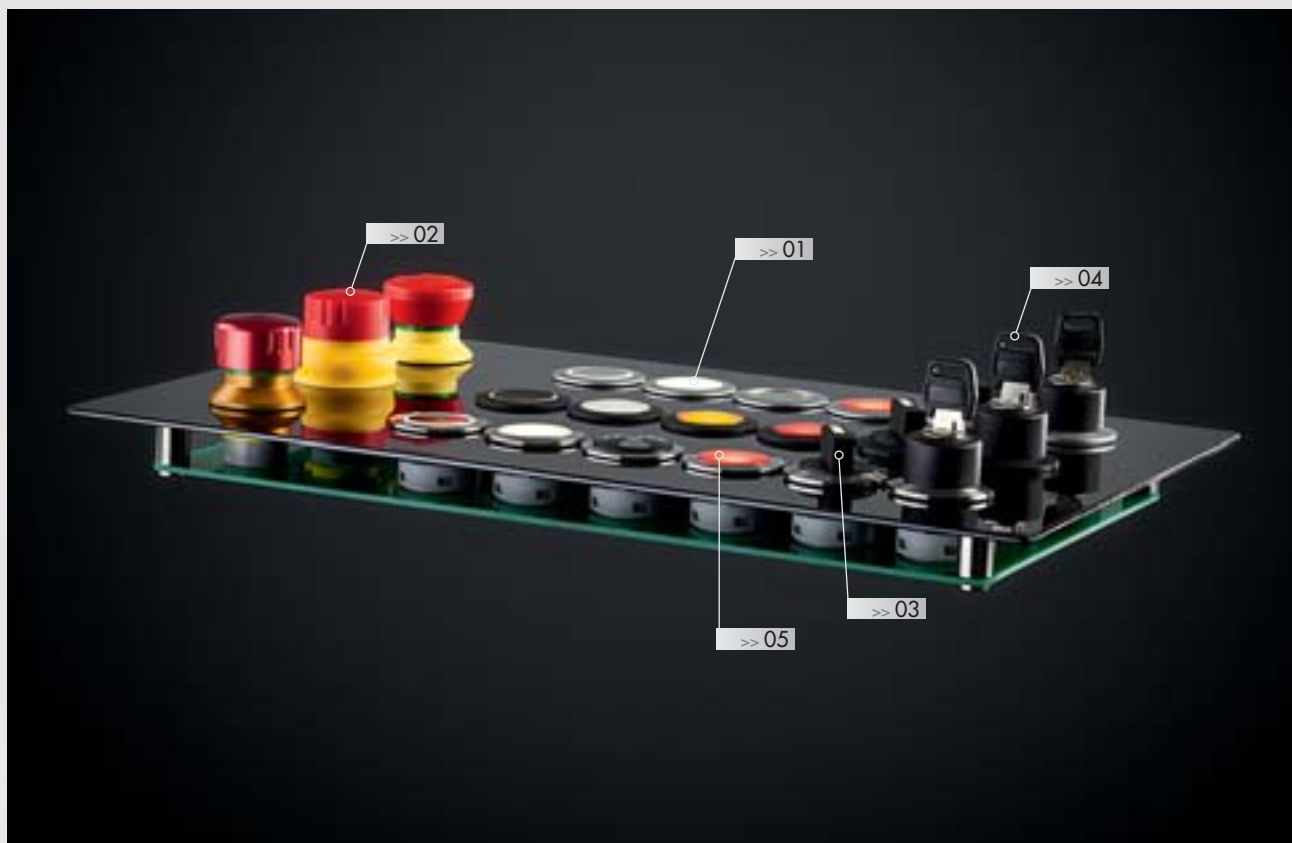
Enclosures

Pedal Switches

Terminal Blocks

Type Index

Overview - SHORTRON series for base-plate mounting



- | | |
|----------------------------|----------|
| 01 Pushbutton heads | page 163 |
| 02 Emergency-stop heads | page 166 |
| 03 Selector heads | page 170 |
| 04 Key actuators | page 171 |
| 05 Pilot light heads | page 173 |
| Contact blocks/lampholders | page 520 |

Housing colours (silver-coloured, black, polished stainless steel)



degree of protection



operating travel



tactile

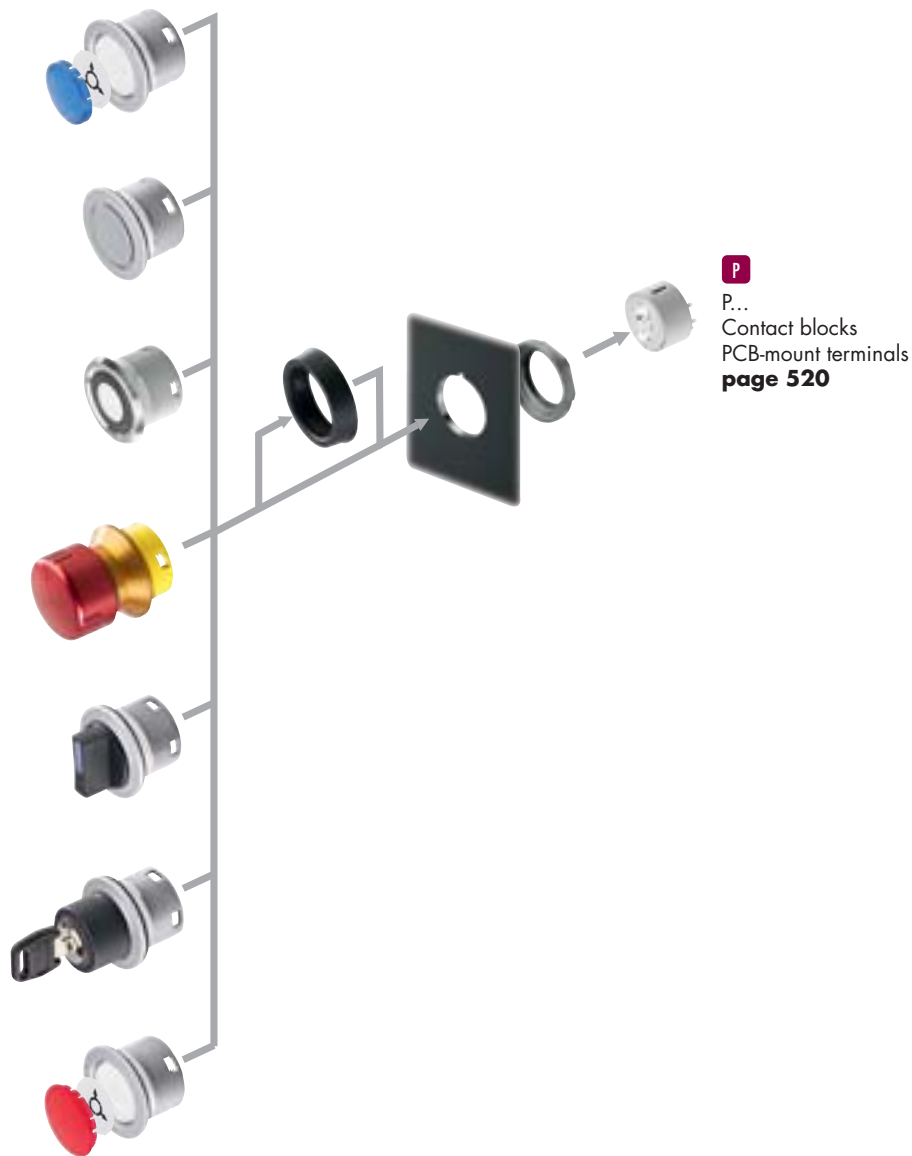


illuminating option

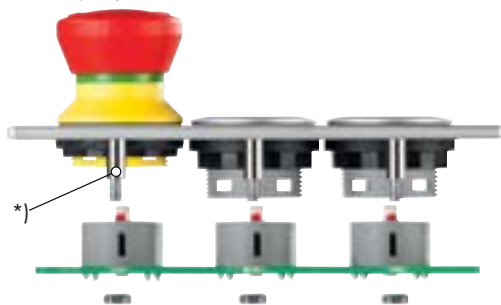


labelling option

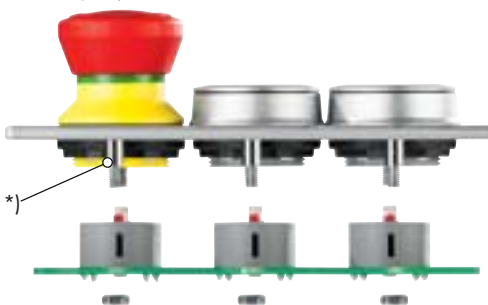




base-plate mounting
mounting depth 16.2 mm



base-plate mounting using a spacer ring SDR/SDRSW
mounting depth 9.2 mm



*) spacer sleeves required (length see mounting depth dimensions)

Shortron® base-plate mounting

MADE IN GERMANY



Ø 22.3 mm

About Us

← Pushbuttons and Switches

Panel Mount Jacks

Emergency-Stop Buttons

Bus Technology

RFID

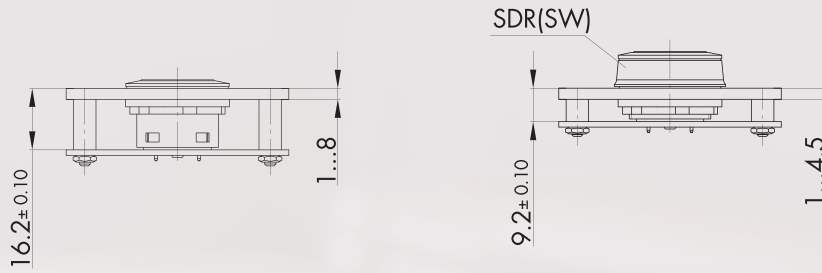
Enclosures

Pedal Switches

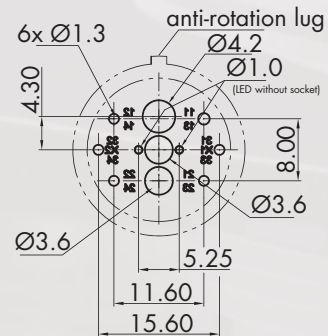
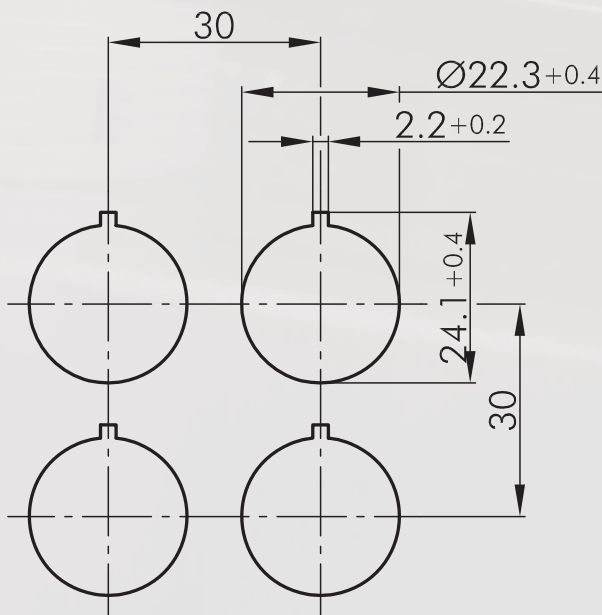
Terminal Blocks

Type Index

Mounting depth dimensions



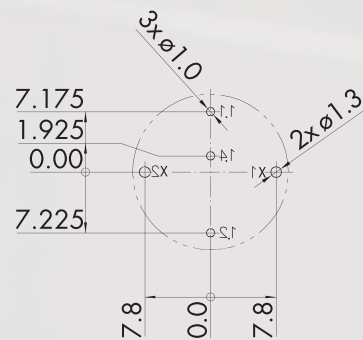
Cutout dimensions



Component side view

Contact assignment: see wiring scheme of the relevant types

PCT...



Pushbuttons

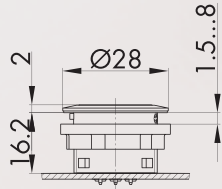
lenses and nameplates to be ordered separately

Illustration

Dimensions

Description

Type



Pushbutton head

suitable contact blocks:

P		
front bezel:	silver-coloured	
	black	
	stainless steel, polished	

ST
SSWT
SVAT

Accessories



Flat lens, transparent

colour:	blue		T22RRBL
	yellow		T22RRGB
	green		T22RRGN
	clear		T22RRKL
	red		T22RRRT
	opal white		T22RRWS



High lens, transparent

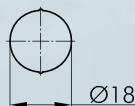
colour:	blue		T22HRRBL
	yellow		T22HRRGB
	green		T22HRRGN
	clear		T22HRRKL
	red		T22HRRRT
	opal white		T22HRRWS



Flat lens, non-transparent

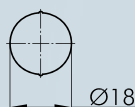
for pushbuttons without inscription and illumination

colour:	blue		T22RRGBL
	yellow		T22RRGGB
	green		T22RRGGN
	black		T22RRGSW
	red		T22RRGRT
	white		T22RRGWS



Blank nameplate

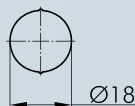
BSRRU



Nameplate with standard imprint

please specify index number (see nameplates from page 634)

BSRR...



Nameplate with special imprint

according to customer's specification

BSRRB

Shortron® base-plate mounting

Ø 22.3 mm

About Us

← Pushbuttons
and Switches

Panel Mount Jacks

Emergency-Stop Buttons

Bus Technology

RFD

Enclosures

Pedal Switches

Terminal Blocks

Type Index

Pushbuttons

Illustration

Dimensions

Description

Type

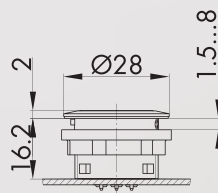
IP67



Sealing cap

made of silicone rubber, down to -50°C

TK28S



Pushbutton head with ring illumination

incl. lens

suitable contact blocks:

P

front bezel:	black		
illuminated ring:	white		SSWTLRW
illuminated ring:	red		SSWTLRR
illuminated ring:	green		SSWTLRG
illuminated ring:	yellow		SSWTLRY
illuminated ring:	blue		SSWTLRB
front bezel:	silver-coloured		
illuminated ring:	white		STLRW
illuminated ring:	red		STLRR
illuminated ring:	green		STLRG
illuminated ring:	yellow		STLRY
illuminated ring:	blue		STLRB
front bezel:	stainless steel, polished		
illuminated ring:	white		SVATLRW
illuminated ring:	red		SVATLRR
illuminated ring:	green		SVATLRG
illuminated ring:	yellow		SVATLRY
illuminated ring:	blue		SVATLRB

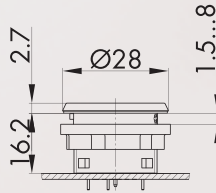
Membrane Pushbuttons

Illustration

Dimensions

Description

Type



Membrane pushbutton head

combining the advantages of a membrane keypad with the flexibility of conventional actuators, with blank nameplate standard inscription (see from page 634) or special imprints on request
only to be combined with PCT... contact blocks

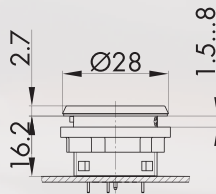
suitable contact blocks:

P

front bezel: stainless steel, polished
Front ring: black



SVACFT



Membrane pushbutton head, black

combining the advantages of a membrane keypad with the flexibility of conventional actuators, with blank nameplate standard inscription (see from page 634) or special imprints on request
only to be combined with PCT... contact blocks

suitable contact blocks:

P

front bezel: black
Front ring: black



SSWCFT

Emergency-Stops

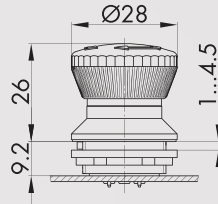
Illustration

Dimensions

Description

Type

IP65
IP67



Emergency-stop head for 9.2 mm mounting depth

ATTENTION: may not be used for illuminated contact blocks

Foolproof: yes
Switching position indicator: yes
Anti-lock collar: no
Release: twist right or left
Standard: EN 60947-5-1, EN 60947-5-5,
EN ISO 13850



suitable contact blocks:

P

front bezel: yellow

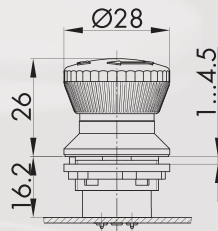


Mushroom head: red



FRVK

IP65
IP67



Emergency-stop head for 16.2 mm mounting depth

ATTENTION: not suitable for illuminated contact units!

Foolproof: yes
Switching position indicator: yes
Anti-lock collar: no
Release: twist right or left
Standard: EN 60947-5-1, EN 60947-5-5,
EN ISO 13850



suitable contact blocks:

P

front bezel: yellow

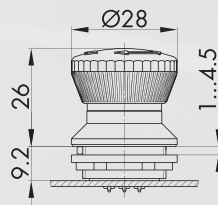


Mushroom head: red



FRVKZ

IP65
IP67



Illuminated emergency-stop head for 9.2mm mounting depth

Foolproof: yes
Switching position indicator: yes
Anti-lock collar: no
Standard: EN 60947-5-1, EN 60947-5-5,
EN ISO 13850



suitable contact blocks:

P

front bezel: yellow



Mushroom head: red



FRVKL

Emergency-Stops

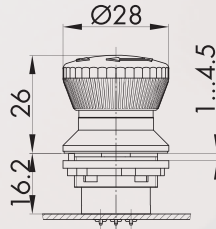
Illustration

Dimensions

Description

Type

IP65
IP67





Illuminated emergency-stop head for 16.2 mm mounting depth

Foolproof: yes
Switching position indicator: yes
Anti-lock collar: no
Standard: EN 60947-5-1, EN 60947-5-5, EN ISO 13850



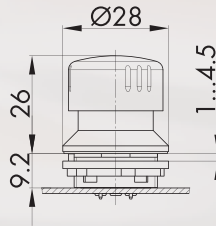
suitable contact blocks:

P

front bezel: yellow 
Mushroom head: red 

FRVKZL

IP65
IP67





Emergency-stop head made of aluminium for robust applications for 9.2 mm mounting depth

Foolproof: yes
Switching position indicator: yes
Anti-lock collar: no
Release: twist right or left
Standard: EN 60947-5-1, EN 60947-5-5, EN ISO 13850



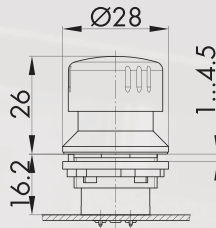
suitable contact blocks:

P

front bezel: yellow 
Mushroom head: red 

FRVKAL

IP65
IP67




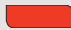
Emergency-stop head made of aluminium for robust applications for 16.2 mm mounting depth

Foolproof: yes
Switching position indicator: yes
Anti-lock collar: no
Release: twist right or left
Standard: EN 60947-5-1, EN 60947-5-5, EN ISO 13850



suitable contact blocks:

P

front bezel: yellow 
Mushroom head: red 

FRVKZAL

Emergency-Stops

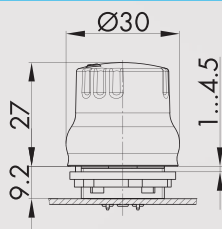
Illustration

Dimensions

Description

Type

IP66



Emergency-stop head for hygienic applications for 9.2 mm mounting depth

hygienic test acc. to DIN EN 1672-2 / DIN EN ISO 14159 and GS-NV 6

Foolproof: yes
 Switching position indicator: no
 Anti-lock collar: no
 Release: twist right or left
 Standard: EN 60947-5-1, EN 60947-5-5, EN ISO 13850

suitable contact blocks:

P

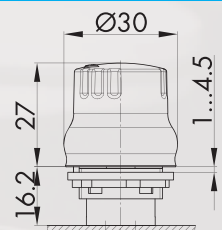
front bezel: yellow

Mushroom head: red



FRVKP

IP66



Emergency-stop head for hygienic applications for 16.2 mm mounting depth

Foolproof: yes
 Switching position indicator: no
 Anti-lock collar: no
 Release: twist right or left
 Standard: EN 60947-5-1, EN 60947-5-5, EN ISO 13850

suitable contact blocks:

P

front bezel: yellow

Mushroom head: red



FRVKZP

Potentiometers

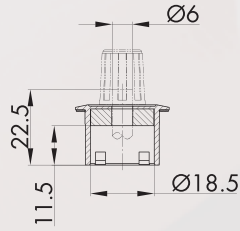
Illustration

Dimensions

Description

Type

IP65



Knob set for potentiometers, silver-coloured

with rotary handle, however without potentiometer for potentiometers of 6 mm shaft diameter (without thread)

shaft length: approx. 22.5 mm

Switching position yes

indicator:

front bezel:

silver-coloured

black



SRZ

SSWRZ

Ø 22.3 mm

About Us

Selector Switches (momentary/maintained)

I = Switching position
> = Spring return

← Pushbuttons and Switches

Panel Mount Jacks

Emergency-Stop Buttons

Bus Technology


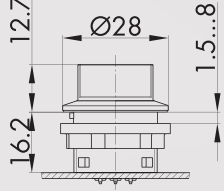


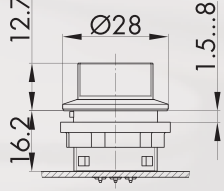
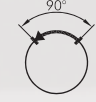

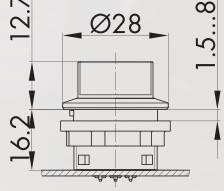

RFD

Enclosures

Pedal Switches

Terminal Blocks

Type Index

Illustration	Dimensions	Description	Type
 	<p>12.7 Ø28 16.2 1.5...8</p>	Illuminated selector head, maintained suitable contact blocks: P	 <p>SWA SSWWA SVAWA</p>
		front bezel: silver-coloured, black, stainless steel, polished	
 	<p>12.7 Ø28 16.2 1.5...8</p>	Illuminated selector head, momentary suitable contact blocks: P	 <p>SSTA SSWSTA SVASTA</p>
		front bezel: silver-coloured, black, stainless steel, polished	
 	<p>12.7 Ø28 16.2 1.5...8</p>	Illuminated selector head, left maintained, right momentary suitable contact blocks: P	 <p>SWC SSWWC SVAWC</p>
		front bezel: silver-coloured, black, stainless steel, polished	

Key Switches (momentary/maintained)

I = Switching position
> = Spring return
O = Key removable position

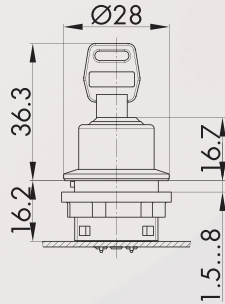
Illustration

Dimensions

Description

Type

IP65



Key actuator, maintained

including two keys
other lock types on request

suitable contact blocks:

P

front bezel: silver-coloured
black
stainless steel, polished



SSSA12
SSWSSA12
SVASSA12

suitable contact blocks:

P

front bezel: silver-coloured
black
stainless steel, polished



SSSA13
SSWSSA13
SVASSA13

suitable contact blocks:

P

front bezel: silver-coloured
black
stainless steel, polished



SSSA14
SSWSSA14
SVASSA14

suitable contact blocks:

P

front bezel: silver-coloured
black
stainless steel, polished



SSSA15
SSWSSA15
SVASSA15

suitable contact blocks:

P

front bezel: silver-coloured
black
stainless steel, polished



SSSA16
SSWSSA16
SVASSA16

suitable contact blocks:

P

front bezel: silver-coloured
black
stainless steel, polished



SSSA17
SSWSSA17
SVASSA17

suitable contact blocks:

P

front bezel: silver-coloured
black
stainless steel, polished



SSSA18
SSWSSA18
SVASSA18

Shortron® base-plate mounting

MADE IN GERMANY



Ø 22.3 mm

About Us

Pushbuttons and Switches

Panel Mount Locks

Emergency-Stop Buttons

Bus Technology

RFD

Enclosures

Pedal Switches

Terminal Blocks

Type Index

Key Switches (momentary/maintained)

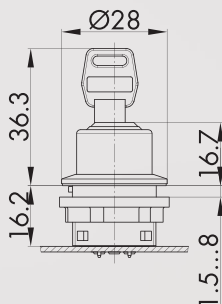
Illustration

Dimensions

Description

Type

IP65



Key actuator, maintained (3 different keys)

including three keys

1st key: two-way operation

2nd key: operation only to the left

3rd key: operation only to the right

suitable contact blocks:

P

front bezel:

silver-coloured

black

stainless steel, polished



SSSA31

SSWSSA31

SVASSA31

Accessories



Standard spare keys

ESMIC482

standard spare key, specify key number for special locks

Pilot Lights

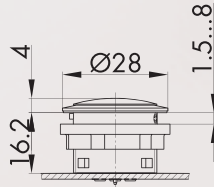
Illustration

Dimensions

Description

Type

IP65
IP67



Pilot light head

suitable lamp elements:

P

front bezel:

silver-coloured

black

stainless steel, polished



SN

SSWN

SVAN

Accessories



Lens

colour:

blue

yellow

green

clear

red

opal white



K22RRBL

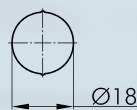
K22RRGB

K22RRGN

K22RRKL

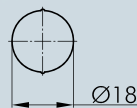
K22RRRT

K22RRWS



Blank nameplate

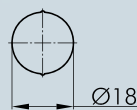
BSRRU



Nameplate with standard imprint

please specify index number (see nameplates from page 634)

BSRR...



Nameplate with special imprint

according to customer's specification

BSRRB

Ø 22.3 mm

About Us

Pilot Lights

← Pushbuttons and Switches

Panel Mount Jacks

Emergency-Stop Buttons

Bus Technology

RFD

Enclosures

Pedal Switches

Terminal Blocks

Type Index

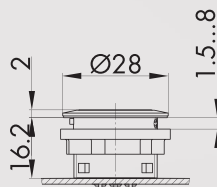
Illustration

Dimensions

Description

Type

IP65
IP67



Pilot light head with ring illumination

suitable lamp elements:

P

front bezel:	silver-coloured		
Illuminated ring:	blue		SNLRB
Illuminated ring:	green		SNLRG
Illuminated ring:	yellow		SNLRY
Illuminated ring:	clear		SNLRW
Illuminated ring:	red		SNLRR
front bezel	black		
Illuminated ring:	blue		SSWNLRB
Illuminated ring:	green		SSWNLRG
Illuminated ring:	yellow		SSWNLRY
Illuminated ring:	clear		SSWNLRW
Illuminated ring:	red		SSWNLRR
front bezel	stainless steel, polished		
Illuminated ring:	blue		SVANLRB
Illuminated ring:	green		SVANLRG
Illuminated ring:	yellow		SVANLRY
Leuchtring:	clear		SVANLRW
Illuminated ring:	red		SVANLRR

Accessories



Spacer ring

suitable for the Shortron series
for panel thickness from 0.5 to 2.5 mm

colour:	silver-coloured		SDR
	black		SDRSW



Mounting tool 22

S22

with torque limitation
for the series QUARTEX-R(-JUWEL), KOMBITAST-R-JUWEL,
RONDEX, RONDEX-M, RONDEX-JUWEL, RVA, DUX-Basic,
SHORTRON, jacks of the ranges RONTRON-R/-Q-JUWEL



Mounting tool adapter with 1/4" connections

SRA

for mounting tools S16 and S22

Accessories for Pushbuttons and Switches

Illustration	Dimensions	Description	Type
		External nameplate holder for self-adhesive outside marking of the actuators of the RONTRON-RJUWEL, SHORTRON series (except selector and key switches) to snap on from the front colour: transparent	 RRJABT
		Self-adhesive nameplate laser-printed inscription according to customer's specification dimensions: 22 x 11 mm	BZ16L...
		Self-adhesive nameplate blank dimensions: 22 x 11 mm	BZ16U
		Self-adhesive nameplate with standard imprint please specify index number (see nameplates from page 634) dimensions: 22 x 11 mm	BZ16B...
		Yellow nameplate self-adhesive PVC foil printing on request outer dia. 75 mm for mounting dia. 22.3 mm colour: yellow	 NAS_22
		Yellow nameplate with quadrilingual imprint self-adhesive PVC foil outer dia. 75 mm for mounting dia. 22.3 mm colour: yellow	 NAS_22_548
		Universal lens remover	USK

About Us

→ Pushbuttons and Switches

Panel Mount Jacks

Emergency-Stop Buttons

Bus Technology

RFID

Enclosures

Pedal Switches

Terminal Blocks

Type Index