




Front dimensions: \varnothing 28 mm
Panel cut-out: \varnothing 22.3 mm
Front bezel height: 2 mm
Travel: 2.3 mm



SHORTTRON® connect

 Product configurator



SHORTRON® connect - small, quick, efficient

→ Simplicity

Quick and easy installation with M12 connector.



→ Efficiency

No enclosure necessary, low cabling effort, time-saving installation, also possible without technical staff.



→ Safety

High degree of protection IP65/IP67 in the front and on the rear. Anti-rotation/reverse polarity protection thanks to the M12 connector.



→ Flexibility

There are pushbuttons, selector and key switches, pilot light and emergency-stops in various contact type combinations available. The nameplates of the pushbuttons which can be exchanged can be printed in one or more colours.



→ Compactness

Low space requirement thanks to the compact construction with less mounting depth.



→ Harmony

Colour design of the pushbuttons and switches with black, silver-coloured or stainless steel front ring. Pleasant illumination on the variants with illumination option.



→ Functionality

High mechanical and electrical lifetime, pleasant and perceptible switching characteristic.



Overview SHORTRON® connect series



- | | |
|---------------------------|----------|
| 01 Pushbuttons | page 184 |
| 02 Emergency-stop buttons | page 188 |
| 03 Selector switches | page 189 |
| 04 Key switches | page 193 |
| 05 Pilot lights | page 196 |
| 06 Mounting brackets | page 198 |

Housing colours (silver-coloured, black, stainless steel glossy)



degree of protection



operating travel



tactile



illuminating option



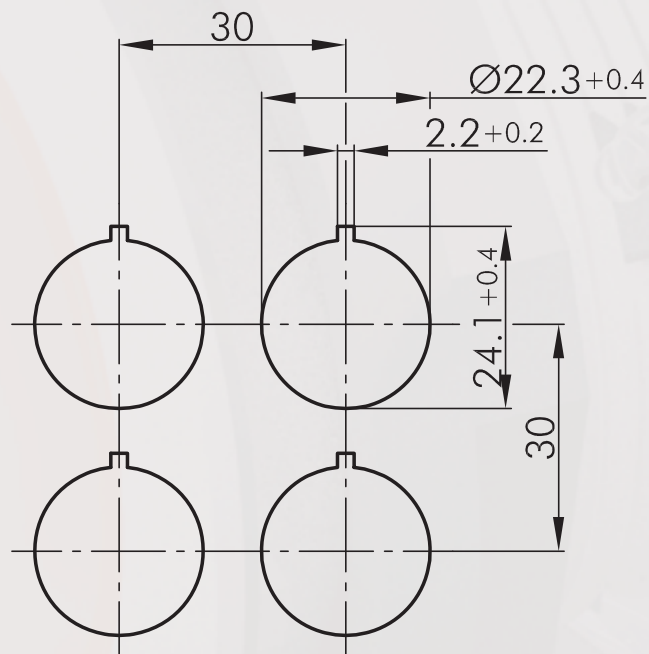
labelling option



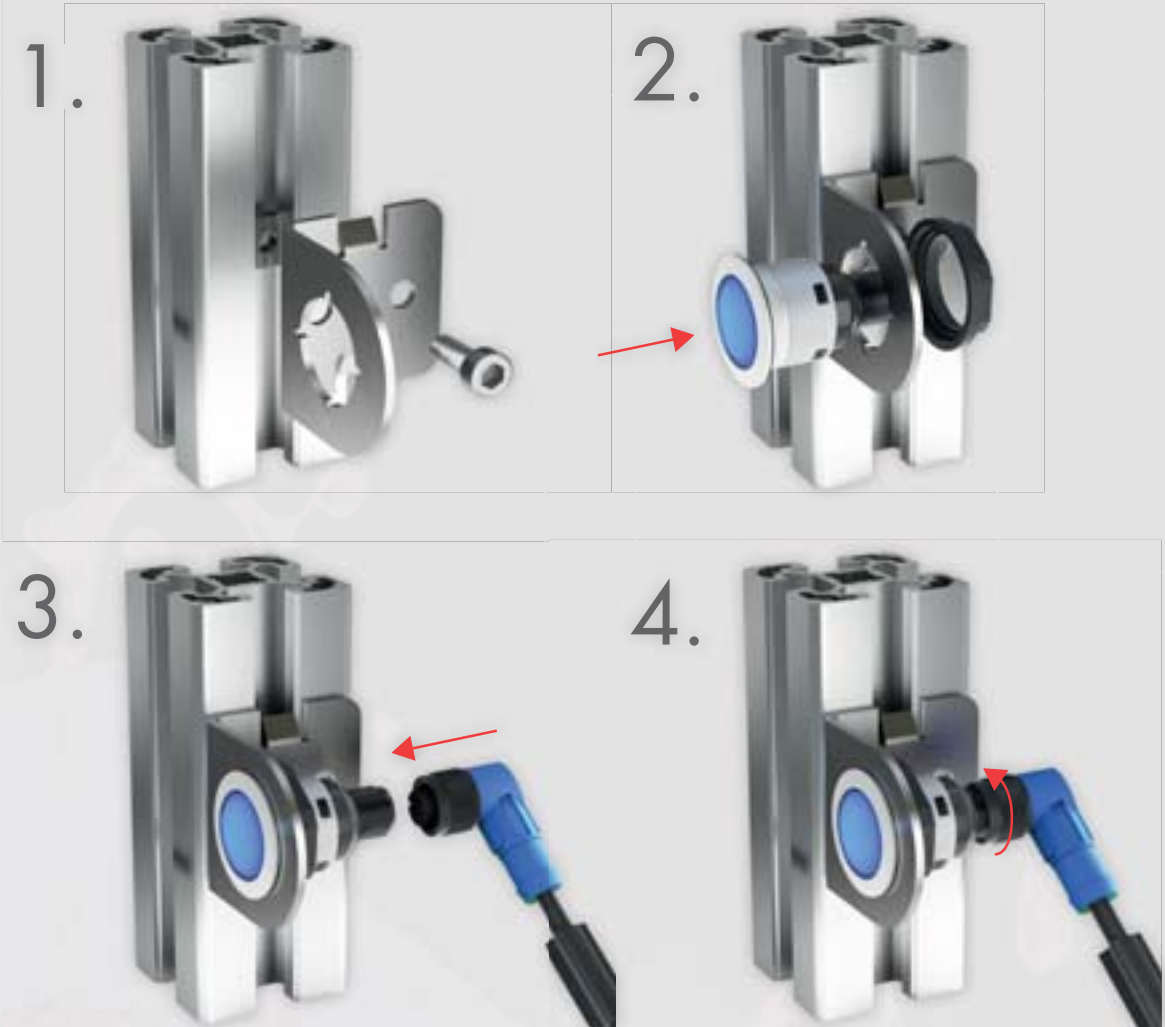
Mounting depth dimensions



Cutout dimensions



Mounting and service instructions



About Us

→ Pushbuttons and Switches

Panel Mount Jacks

Emergency-Stop Buttons

Bus Technology

RFID

Enclosures

Pedal Switches

Terminal Blocks

Type Index

Ø 22.3 mm

About Us

→ Pushbuttons
and Switches

Panel Mount Jacks

Emergency-Stop Buttons

Bus Technology

RFD

Enclosures

Pedal Switches

Terminal Blocks

Type Index

General Data

| | |
|-------------------------------|--|
| Type reference: | S(VA)(SW)(T)(N)(TLR(L))(f)(WA)(WB)(WC)(L)(SSA...)(I)(OI)(II)_Cyxx |
| Description: | Short-stroke pushbutton with integrated M12 connector |
| Approvals: | CE, cURus |
| Contact type: | 2NO / 1NC + 1NO / 1NC + L / 1NO + L / 1NC / L |
| Protection class: | II (protective insulation) |
| Degree of protection: | IP65/67 (T,TLR,N, in the front); IP65 (SSA,STA,STB,WA,WB,WC, in the front); IP65 |
| Operation travel: | 2.3 mm (pushbutton) |
| Connection type: | M12 connector (integrated), 4 poles, A coded |
| Contact material: | AgNi / AgNi, gold-plated 5µm (LAU) |
| Max. storage temperature: | -40°C ... 80°C |
| Max. operating temperature: | -25°C ... 70°C |
| Mechanical life: | 1 million (T, TL) |
| Electrical life (rated load): | 30.000 (WA, WAL, WB, WC, SSA) 1 million (T, TL), DC13:max. 100.000 30.000 (WA, WAL, WB, WC, SSA) |
| Contact resistance NO: | < 50 mOhm (new state) |
| Contact resistance NC: | < 50 mOhm (new state) |
| Bouncing time NC: | < 10ms |
| Positive opening contact: | acc. to EN60947-5-1, appendix K |

Electrical data acc. to IEC/EN 60947-5-1 (VDE 0660 Sect. 200)

| | | |
|------------------------------|-------------------|----------------|
| | alternate current | direct current |
| Utilisation category: | AC15 | DC13 |
| Rated insulation voltage Ui: | 50 V | 50 V |
| Rated operating voltage Ue: | 35 V | 35 V |
| Rated operating current Ie: | 4 A | 2 A |
| Continuous thermal current: | 4 A | |

Technical Data - Lamp

| | |
|--------------------|--------------------------------------|
| Lamp socket: | none, with integrated 3 mm LED white |
| Max. lamp voltage: | 30 V AC/DC |
| Max. lamp output: | 14 mA (at 24 V DC) |
| Definition: | X1...anode, X2...cathode |

Additional data

| | |
|-----------------------------------|--------------------------|
| Mounting aperture: | 22.3 mm |
| Tightening torque (mounting nut): | 1.5 ... 1.9 Nm |
| Mounting position: | any |
| Standards: | EN 60947-5-1, EN 61058-1 |
| Material group: | I |
| Overvoltage category: | II |
| Pollution degree : | 2 |

Electrical features gold-plated contacts

| | |
|---------------------------------|--------------------|
| Operational voltage: | 20 mV...35 V AC/DC |
| Switching current: | 1mA ... 100mA |
| Breaking capacity (ohmic load): | 250 mW |
| Contact resistance (new state): | < 50 mOhm |

Note

| | |
|---------|---|
| O / I | ...NC contact / NO contact |
| ...Cyxx | version |
| "y" | 0 = 4-pole connector, silver contact 3 = 4-pole connector, gold-plated contact |

"xx"

| | | | | | |
|----------------|--------|--------|--------|--------|------------|
| pin assignment | | | | | |
| xx | Pin 1 | Pin 2 | Pin 3 | Pin 4 | Type |
| 01 | - | - | - | - | - |
| 02 | NO (1) | NO (1) | NO (2) | NO (2) | 2 NO |
| 03 | NC | NC | NO | NO | 1 NC 1 NO |
| 04 | NC | NC | LED - | LED + | 1 NC + LED |
| 05 | NO | NO | LED - | LED + | 1 NO + LED |
| 06 | NC | NC | - | - | 1 NC |
| 07 | NO | NO | - | - | 1 NO |
| 08 | COM | NC | - | NO | 1 NC 1 NO |
| 09 | COM | NO (1) | - | NO (2) | 2 NO |
| 10 | - | - | LED - | LED + | LED |

Safety instructions / mounting instructions

- the connector must not be connected or disconnected under load
- the single connector pin may be loaded with max. 4A
- selector / key switches with bridged connection ("COM", pin assignment 08,09) a max. of 1A is allowed

General Data

| | |
|-------------------------------|--|
| Type reference: | FRVKOO_Cyxx (y...variant, xx...pin assignment, 4 poles) |
| Description: | Emergency-stop, foolproof with integrated M12 connector |
| Approvals: | CE, TÜV_Süd |
| Contact type: | 2NC |
| Degree of protection: | IP65 / IP67 (in the front); IP65 / IP67 (on the rear with plugged-in M12 connector) |
| Connection type: | M12 connector (integrated), 4 poles, A coded |
| Contact material: | AgNi / AgNi, gold-plated 5µm (_AU) |
| Max. storage temperature: | -40°C ... 80°C |
| Max. operating temperature: | -25°C ... 70°C |
| Mechanical life: | 50.000 |
| Electrical life (rated load): | 50.000 at rated load |
| Contact resistance NC: | < 50 mOhm (new state) |
| Bouncing time NC: | < 10ms |
| Positive opening contact: | acc. to EN60947-5-1, appendix K |

Electrical data acc. to IEC/EN 60947-5-1 (VDE 0660 Sect. 200)

| | | |
|------------------------------|-------------------|----------------|
| | alternate current | direct current |
| Utilisation category: | AC15 | DC13 |
| Rated insulation voltage Ui: | 250 V | 250 V |
| Rated operating voltage Ue: | 35 V | 35 V |
| Rated operating current Ie: | 4 A | 2 A |
| Breaking capacity: | 10Ie | 1,1Ie |
| Continuous thermal current: | 4 A | 4 A |

Additional data

| | |
|-----------------------------------|--|
| Mounting aperture: | 22.3 mm |
| Tightening torque (mounting nut): | 1.0 ... 1.7 Nm |
| Release: | twist release, left or right |
| Mounting position: | any |
| Standards: | EN 60947-5-1, EN 60947-5-5, EN ISO 13850 |
| Ld: | 20% (NC) |
| B10d: | 250.000 |
| Material group: | I |
| Overvoltage category: | II |
| Pollution degree : | 2 |
| Operating force: | approx. 30 N (at 20 mm/min) |

Note

O = NC contact
With switching position indicator

Electrical features gold-plated version (5µm gold-plating)

| | |
|-------------------|--------------------|
| Switching voltage | 20mV ... 35V AC/DC |
| Switching current | 1mA ... 250mA |

...Cyxx
"y"

version
0 = 4-pole connector, silver contact
3 = 4-pole connector, gold-plated contact

"xx"

| | | | | | | |
|----|----------------|--------|--------|--------|------|--|
| | pin assignment | | | | | |
| xx | Pin 1 | Pin 2 | Pin 3 | Pin 4 | Type | |
| 01 | NC (1) | NC (1) | NC (2) | NC (2) | 2 NC | |

Safety instructions / mounting instructions

- the connector must not be connected or disconnected under load
- the single connector pin may be loaded with max. 4A
- not suitable for use under water
- when used outdoors, the M12 connections must be protected against corrosion separately

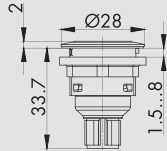
Pushbuttons

Illustration

Dimensions

IP65
IP67

2,3mm



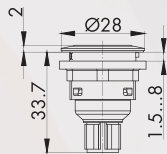
Pushbutton with 4-pole M12 connector with integrated 4-pole M12 connector, A coded



| | | | |
|---------------------------|-------------------|--------------------|--------------------|
| | | | |
| | | | |
| <i>front bezel</i> | 1NO | 2NO | 1NC + 1NO |
| silver-coloured | STI_C007 | STII_C009 | STOI_C008 |
| black | SSWTI_C007 | SSWTII_C009 | SSWTOI_C008 |
| stainless steel, polished | SVATI_C007 | SVATII_C009 | SVATOI_C008 |

IP65
IP67

2,3mm



Illuminated pushbutton with 4-pole M12 connector with integrated 4-pole M12 connector, A coded incl. white LED M12 4 poles, A-coded



| | |
|---------------------------|--------------------|
| | |
| | |
| | |
| <i>front bezel</i> | 1NO |
| silver-coloured | STLI_C005 |
| black | SSWTLI_C005 |
| stainless steel, polished | SVATLI_C005 |

Accessories for Pushbuttons and Switches

Illustration

Dimensions

Accessories



Flat lens, transparent

| | | | |
|---------|------------|--|---------|
| colour: | blue | | T22RRBL |
| | yellow | | T22RRGB |
| | green | | T22RRGN |
| | clear | | T22RRKL |
| | red | | T22RRRT |
| | opal white | | T22RRWS |



High lens, transparent

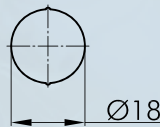
| | | | |
|---------|------------|--|----------|
| colour: | blue | | T22HRRBL |
| | yellow | | T22HRRGB |
| | green | | T22HRRGN |
| | clear | | T22HRRKL |
| | red | | T22HRRRT |
| | opal white | | T22HRRWS |



Flat lens, non-transparent

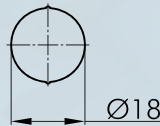
for pushbuttons without inscription and illumination

| | | | |
|---------|--------|--|----------|
| colour: | blue | | T22RRGBL |
| | yellow | | T22RRGGB |
| | green | | T22RRGGN |
| | black | | T22RRGSW |
| | red | | T22RRGRT |
| | white | | T22RRGWS |



Blank nameplate

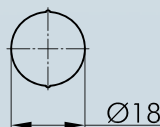
BSRRU



Nameplate with standard imprint

please specify index number (see nameplates from page 634)

BSRR...



Nameplate with special imprint

according to customer's specification

BSRRB

IP67



Sealing cap

made of silicone rubber, down to -50°C

TK28S

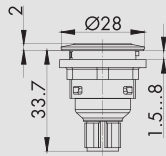
Pushbuttons

Illustration

Dimensions

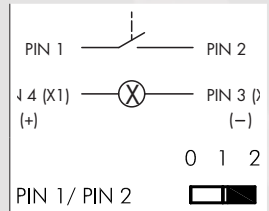
IP65
IP67

2,3mm



Pushbutton with ring illumination and 4-pole M12 connector

with integrated 4-pole M12 connector, A coded
incl. lens and white LED
M12 4 poles, A-coded



| front bezel | illuminated ring | 1NO |
|---------------------------|------------------|----------------------|
| silver-coloured | white | STLRWI_C005 |
| silver-coloured | red | STLRRI_C005 |
| silver-coloured | green | STLRGI_C005 |
| silver-coloured | yellow | STLRYI_C005 |
| silver-coloured | blue | STLRBI_C005 |
| black | white | SSWTLRWI_C005 |
| black | red | SSWTLRRI_C005 |
| black | green | SSWTLRGI_C005 |
| black | yellow | SSWTLRYI_C005 |
| black | blue | SSWTLRBI_C005 |
| stainless steel, polished | white | SVATLRWI_C005 |
| stainless steel, polished | red | SVATLRRI_C005 |
| stainless steel, polished | green | SVATLRGI_C005 |
| stainless steel, polished | blue | SVATLRBI_C005 |
| stainless steel, polished | yellow | SVATLRYI_C005 |

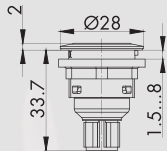
Pushbuttons

Illustration

Dimensions

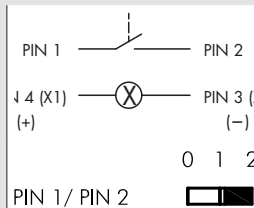
IP65
IP67

2,3mm



Pushbutton with ring illumination and laser printing 4-pole M12 connector

standard imprints see nameplates from page 634 (please specify index number)
special inscription on request
with integrated 4-pole M12 connector, A coded
incl. lens and white LED
M12 4 poles, A-coded



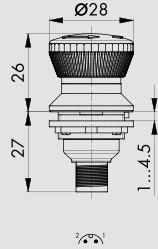
| front bezel | | illuminated ring | | 1NO |
|---------------------------|--|------------------|--|-------------------------|
| silver-coloured | | white | | STLRWI..._C005 |
| silver-coloured | | red | | STLRRI..._C005 |
| silver-coloured | | green | | STLRGI..._C005 |
| silver-coloured | | yellow | | STLRYI..._C005 |
| silver-coloured | | blue | | STLRBI..._C005 |
| black | | white | | SSWTLRWI..._C005 |
| black | | red | | SSWTLRRI..._C005 |
| black | | green | | SSWTLRGI..._C005 |
| black | | yellow | | SSWTLRYI..._C005 |
| black | | blue | | SSWTLRBI..._C005 |
| stainless steel, polished | | white | | SVATLRWI..._C005 |
| stainless steel, polished | | red | | SVATLRRI..._C005 |
| stainless steel, polished | | green | | SVATLRGI..._C005 |
| stainless steel, polished | | yellow | | SVATLRYI..._C005 |
| stainless steel, polished | | blue | | SVATLRBI..._C005 |

Emergency-Stops

Illustration

Dimensions

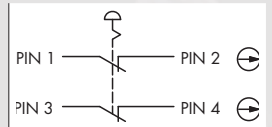
IP65
IP67



Emergency-stop with 4 pole M12 connector

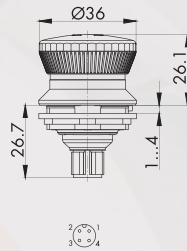
with integrated 4-pole M12 connector, A coded

- 2 NC
- foolproof
- switching position indicator
- twist to release



| | | |
|-------------|---------------|--------------------|
| front bezel | Mushroom head | 2NC |
| yellow | red | FRVKOO_C001 |

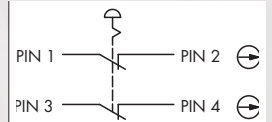
IP65
IP67



Emergency-stop with 4-pole M12 connector - panel cut-out Ø30.5mm

with integrated 4-pole M12 connector, A coded

- 2 NC
- foolproof
- switching position indicator
- twist to release



| | | |
|-------------|---------------|--------------------|
| front bezel | Mushroom head | 2NC |
| yellow | red | KRVKOO_C001 |

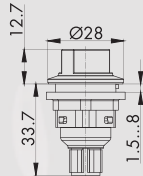
Selector Switches (momentary/maintained)

I = Switching position
> = Spring return

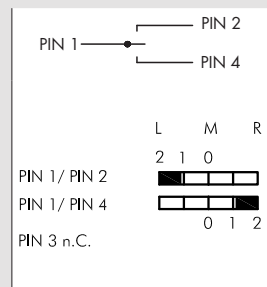
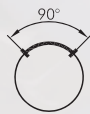
Illustration

Dimensions

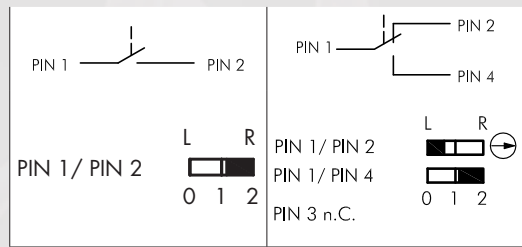
IP65
IP67



Selector switch, maintained, with 4-pole M12 connector
with integrated 4-pole M12 connector, A coded



| | | |
|---------------------------|--|---------------------|
| <i>front bezel</i> | | 2NO |
| silver-coloured | | SWBII_C009 |
| black | | SSWWBII_C009 |
| stainless steel, polished | | SVAWBII_C009 |



| | | | |
|---------------------------|--|--------------------|---------------------|
| <i>front bezel</i> | | 1NO | 1NC + 1NO |
| silver-coloured | | SWAI_C007 | SWAOI_C008 |
| black | | SSWVAI_C007 | SSWVAOI_C008 |
| stainless steel, polished | | SVAAI_C007 | SVAAOI_C008 |

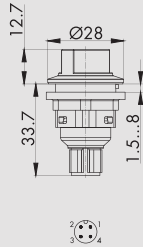
Selector Switches (momentary/maintained)

I = Switching position
> = Spring return

Illustration

Dimensions

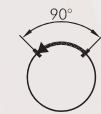
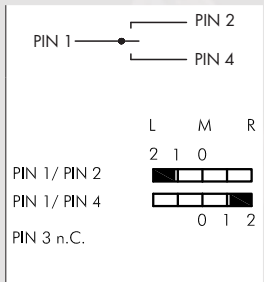
IP65
IP67



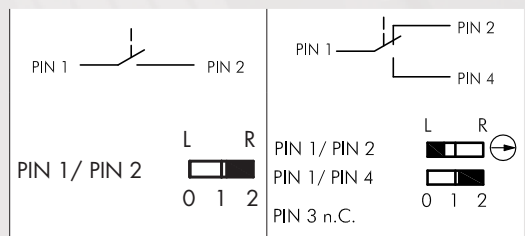
Selector switch, momentary, with 4-pole M12 connector
with integrated 4-pole M12 connector, A coded



| | | |
|---------------------------|--|----------------------|
| front bezel | | 2NO |
| silver-coloured | | SSTBII_C009 |
| black | | SSWSTBII_C009 |
| stainless steel, polished | | SVASTBII_C009 |



| | | | |
|---------------------------|--|---------------------|----------------------|
| front bezel | | 1NO | 1NC + 1NO |
| silver-coloured | | SSTAI_C007 | SSTAOI_C008 |
| black | | SSWSTAI_C007 | SSWSTAOI_C008 |
| stainless steel, polished | | SVASTAI_C007 | SVASTAOI_C008 |



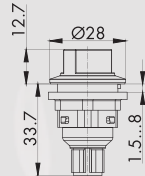
Selector Switches (momentary/maintained)

I = Switching position
> = Spring return

Illustration

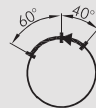
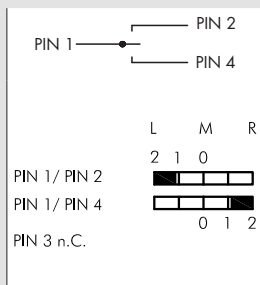
Dimensions

IP65
IP67



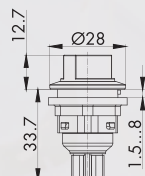
Selector switch, left maintained, right momentary with 4-pole M12 connector

with integrated 4-pole M12 connector, A coded



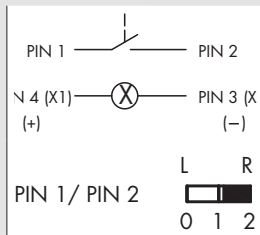
| | | |
|---------------------------|--|---------------------|
| front bezel | | 2NO |
| silver-coloured | | SWCII_C009 |
| black | | SSWWCII_C009 |
| stainless steel, polished | | SVAWCII_C009 |

IP65
IP67



Illuminated selector switch, maintained, with 4-pole M12 connector

with integrated 4-pole M12 connector, A coded
incl. white LED



| | | |
|---------------------------|--|---------------------|
| front bezel | | 1NO |
| silver-coloured | | SWALI_C005 |
| black | | SSWWALI_C005 |
| stainless steel, polished | | SVAWALI_C005 |

SHORTRON® connect

Ø 22.3 mm

MADE IN GERMANY



About Us

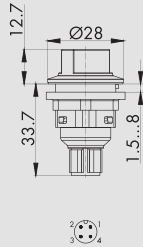
Selector Switches (momentary/maintained)

| = Switching position
> = Spring return

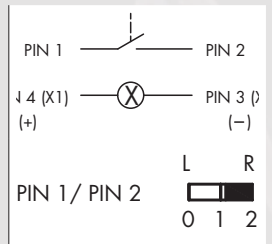
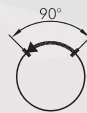
Illustration

Dimensions

IP65
IP67



Illuminated selector switch, momentary, with 4-pole M12 connector
with integrated 4-pole M12 connector, A coded
incl. white LED



| | | |
|---------------------------|--|----------------------|
| front bezel | | 1NO |
| silver-coloured | | SSTALI_C005 |
| black | | SSWSTALI_C005 |
| stainless steel, polished | | SVASTALI_C005 |

Panel Mount Jacks

Emergency-Stop Buttons

Bus Technology

RFD

Enclosures

Pedal Switches

Terminal Blocks

Type Index

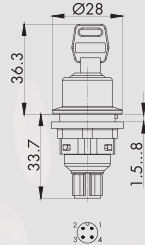
Key Switches (momentary/maintained)

I = Switching position
> = Spring return
O = Key removable position

Illustration

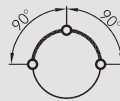
Dimensions

IP65
IP67

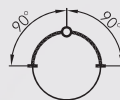
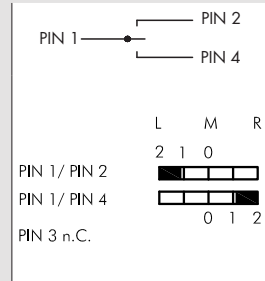


Key-operated switch, maintained, with 4-pole M12 connector

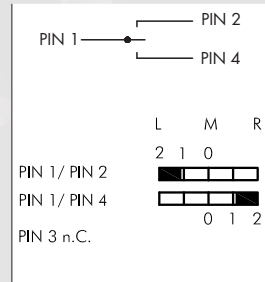
with integrated 4-pole M12 connector, A coded including two keys
other lock types on request



| | | |
|---------------------------|--|------------------------|
| front bezel | | 2NO |
| silver-coloured | | SSSA12II_C009 |
| black | | SSWSSA12II_C009 |
| stainless steel, polished | | SVASSA12II_C009 |



| | | |
|---------------------------|--|------------------------|
| front bezel | | 2NO |
| silver-coloured | | SSSA13II_C009 |
| black | | SSWSSA13II_C009 |
| stainless steel, polished | | SVASSA13II_C009 |



SHORTRON® connect

Ø 22.3 mm

MADE IN GERMANY



About Us

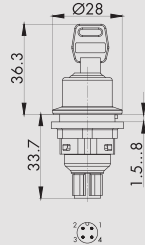
Key Switches (momentary/maintained)

I = Switching position
 > = Spring return
 O = Key removable position

Illustration

Dimensions

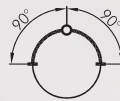
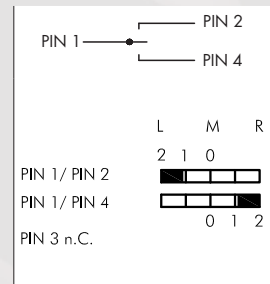
IP65
IP67



Key-operated switch, maintained (3 different keys) with 4-pole M12 connector

with integrated 4-pole M12 connector, A coded incl. 3 keys

- 1st key: two-way operation
- 2nd key: operation to the left only
- 3rd key: operation to the right only



| | | |
|---------------------------|--|------------------------|
| front bezel | | 2NO |
| silver-coloured | | SSSA311I_C009 |
| black | | SSWSSA311I_C009 |
| stainless steel, polished | | SVASSA311I_C009 |

Panel Mount Jacks

Emergency-Stop Buttons

Bus Technology

RTD

Enclosures

Pedal Switches

Terminal Blocks

Type Index

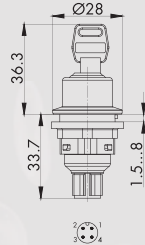
Key Switches (momentary/maintained)

I = Switching position
> = Spring return
O = Key removable position

Illustration

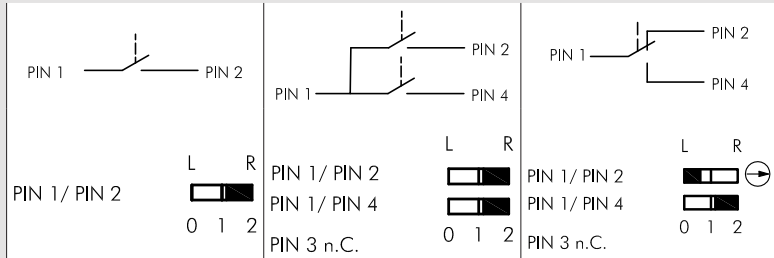
Dimensions

IP65
IP67



Key-operated switch, maintained, with 4-pole M12 connector

with integrated 4-pole M12 connector, A coded including two keys other lock types on request



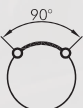
| | | | | |
|---------------------------|--|-----------------------|------------------------|------------------------|
| <i>front bezel</i> | | 1NO | 2NO | 1NC + 1NO |
| silver-coloured | | SSSA14I_C007 | SSSA14II_C009 | SSSA14OI_C008 |
| black | | SSWSSA14I_C007 | SSWSSA14II_C009 | SSWSSA14OI_C008 |
| stainless steel, polished | | SVASSA14I_C007 | SVASSA14II_C009 | SVASSA14OI_C008 |



| | | | | |
|---------------------------|--|-----------------------|------------------------|------------------------|
| <i>front bezel</i> | | 1NO | 2NO | 1NC + 1NO |
| silver-coloured | | SSSA15I_C007 | SSSA15II_C009 | SSSA15OI_C008 |
| black | | SSWSSA15I_C007 | SSWSSA15II_C009 | SSWSSA15OI_C008 |
| stainless steel, polished | | SVASSA15I_C007 | SVASSA15II_C009 | SVASSA15OI_C008 |



| | | | | |
|---------------------------|--|-----------------------|------------------------|------------------------|
| <i>front bezel</i> | | 1NO | 2NO | 1NC + 1NO |
| silver-coloured | | SSSA17I_C007 | SSSA17II_C009 | SSSA17OI_C008 |
| black | | SSWSSA17I_C007 | SSWSSA17II_C009 | SSWSSA17OI_C008 |
| stainless steel, polished | | SVASSA17I_C007 | SVASSA17II_C009 | SVASSA17OI_C008 |



| | | | | |
|---------------------------|--|-----------------------|------------------------|------------------------|
| <i>front bezel</i> | | 1NO | 2NO | 1NC + 1NO |
| silver-coloured | | SSSA18I_C007 | SSSA18II_C009 | SSSA18OI_C008 |
| black | | SSWSSA18I_C007 | SSWSSA18II_C009 | SSWSSA18OI_C008 |
| stainless steel, polished | | SVASSA18I_C007 | SVASSA18II_C009 | SVASSA18OI_C008 |

Accessories



Spare keys
please specify key number

ESMIC...

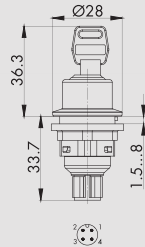
Key Switches (momentary/maintained)

- I = Switching position
- > = Spring return
- O = Key removable position

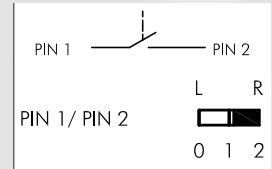
Illustration

Dimensions

IP65
IP67



Key-operated switch, momentary, with 4-pole M12 connector
with integrated 4-pole M12 connector, A coded
including two keys
other lock types on request

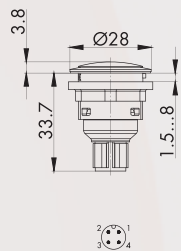


| | | |
|-----------------|--|-----------------------|
| front bezel | | 1NO |
| silver-coloured | | SSSA28I_C007 |
| black | | SSWSSA28I_C007 |

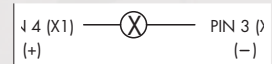
For panel mount jacks, please refer to page 574



IP65
IP67



Pilot light with 4-pole M12 connector
with integrated 4-pole M12 connector, A-coded
incl. white LED



| | | |
|---------------------------|--|------------------|
| front bezel | | |
| silver-coloured | | SN_C010 |
| black | | SSWN_C010 |
| stainless steel, polished | | SVAN_C010 |

Accessories for Pushbuttons and Switches

Illustration

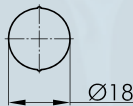
Dimensions

Accessories



Lens

| | | | |
|---------|------------|--|----------------|
| colour: | blue | | K22RRBL |
| | yellow | | K22RRGB |
| | green | | K22RRGN |
| | clear | | K22RRKL |
| | red | | K22RRRT |
| | opal white | | K22RRWS |



Blank nameplate

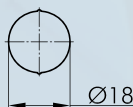
BSRRU



Nameplate with standard imprint

BSRR...

please specify index number (see nameplates from page 634)

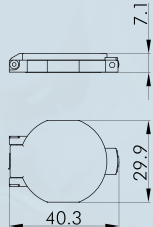


Nameplate with special imprint

BSRRB

according to customer's specification

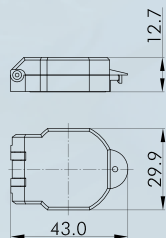
IP40



Lead-sealable protective lid

| | | | |
|---------|-------------|--|----------------|
| colour: | transparent | | KDP22RR |
|---------|-------------|--|----------------|

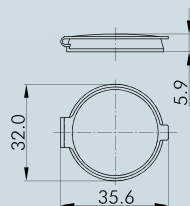
**IP65
IP67**



Lead-sealable, robust, tight protective lid

| | | | |
|---------|-------------|--|--------------------|
| colour: | transparent | | KDPR22RR |
| | black | | KDPR22RR_SW |

IP67



Protective lid made of TPE

| | | | |
|---------|-------|--|-----------------|
| colour: | black | | AK22RRSW |
|---------|-------|--|-----------------|

Accessories for Pushbuttons and Switches

Illustration

Dimensions

Accessories



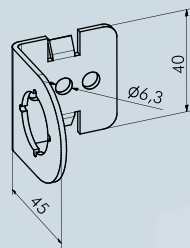
Spacer ring

suitable for the Shortron series
for panel thickness from 0.5 to 2.5 mm

colour: silver-coloured
black



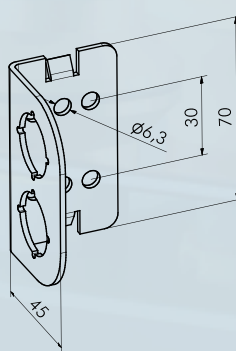
SDR
SDRSW



Mounting bracket 90° / 1 mounting hole stainless steel 1.4301

S_CW190

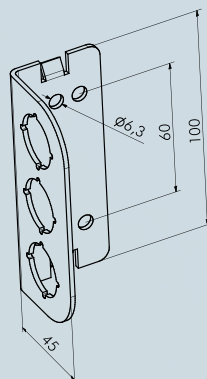
for a fast and easy assembly on profiles



Mounting bracket 90° / 2 mounting holes stainless steel 1.4301

S_CW290

for a fast and easy assembly on profiles



Mounting bracket 90° / 3 mounting holes stainless steel 1.4301

S_CW390

for a fast and easy assembly on profiles

Accessories for Pushbuttons and Switches

Illustration

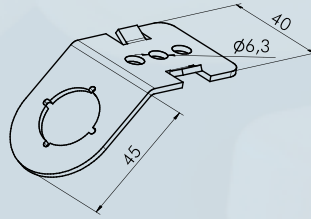
Dimensions



Mounting bracket 135° / 1 mounting hole stainless steel 1.4301

S_CW145

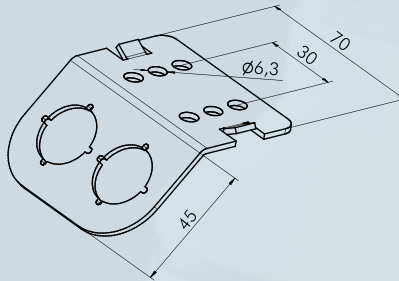
for a fast and easy assembly on profiles



Mounting bracket 135° / 2 mounting holes stainless steel 1.4301

S_CW245

for a fast and easy assembly on profiles



Mounting bracket 135° / 3 mounting holes stainless steel 1.4301

S_CW345

for a fast and easy assembly on profiles

