

Front dimensions: Ø 28 mm
Panel cut-out: Ø 22.3 mm
Front bezel height: 2.6 mm
Travel: 6 mm



 Product configurator



Overview RX-Juwel series



01 Pushbutton heads

02 Emergency-stop heads

03 Knob set for potentiometers

04 Selector heads

05 Key actuators

06 Buzzers

page 216

page 217

page 218

page 218

page 219

page 220

07 Pilot light heads / pilot lights

Contact blocks/lampholders

page 222

page 414

Housing colour



degree of protection



operating travel



tactile

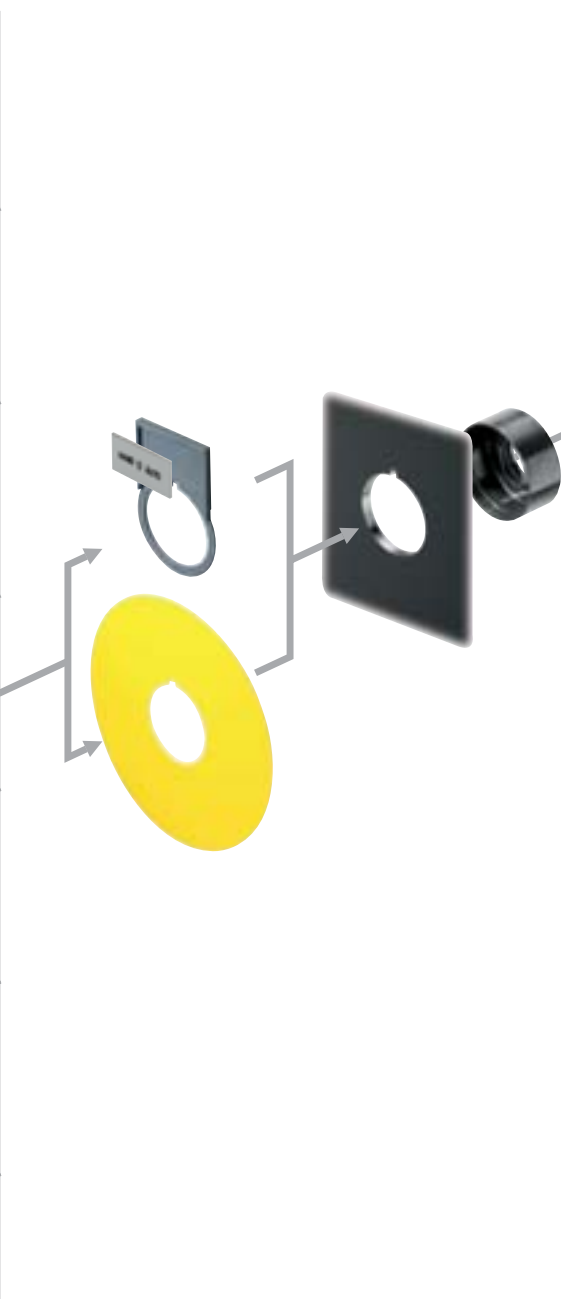



illuminating option





labelling option








- 


AT.../AF.../AZ...
Contact blocks
Faston terminals
page 416
- 


CT...
Contact blocks
Faston terminals
page 502
- 

CTP...
Contact blocks
PCB-mount terminals
page 480
- 

CTF...
Contact blocks
Faston terminals
page 486
- 

FRTP...
Contact blocks
PCB-mount terminals
page 508
- 

FRTF...
Contact blocks
Faston terminals
page 514
- 

ASI...
Contact blocks
for AS-Interface
Safety @ Work
page 554
- 

DFA...
Battery-free wireless
transmitter modules
page 566

About Us

→ Pushbuttons and Switches

Panel Mount Jacks

Emergency-Stop Buttons

Bus Technology

RFID

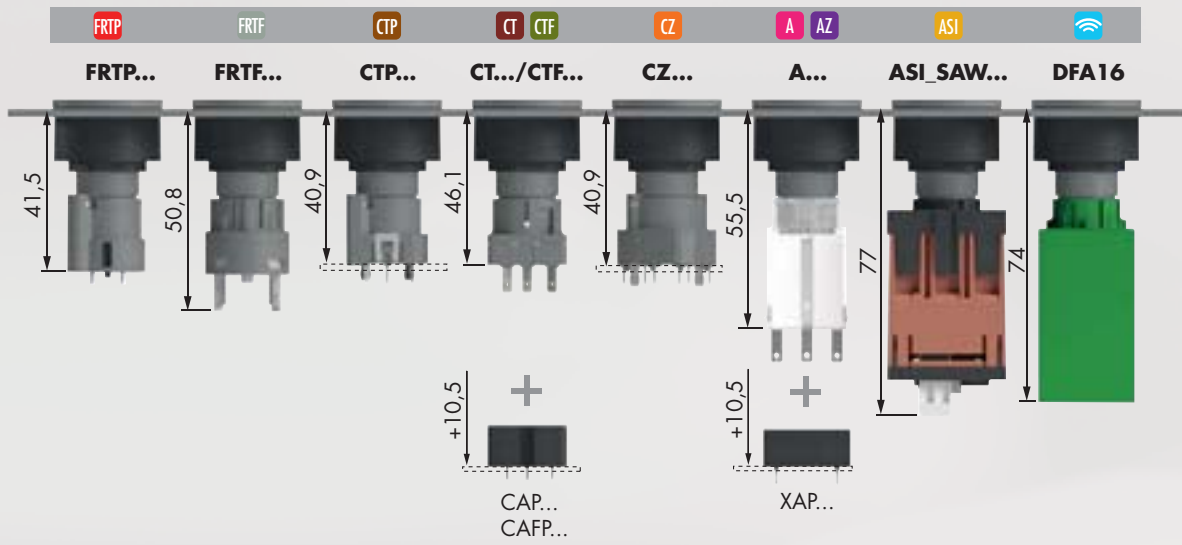
Enclosures

Pedal Switches

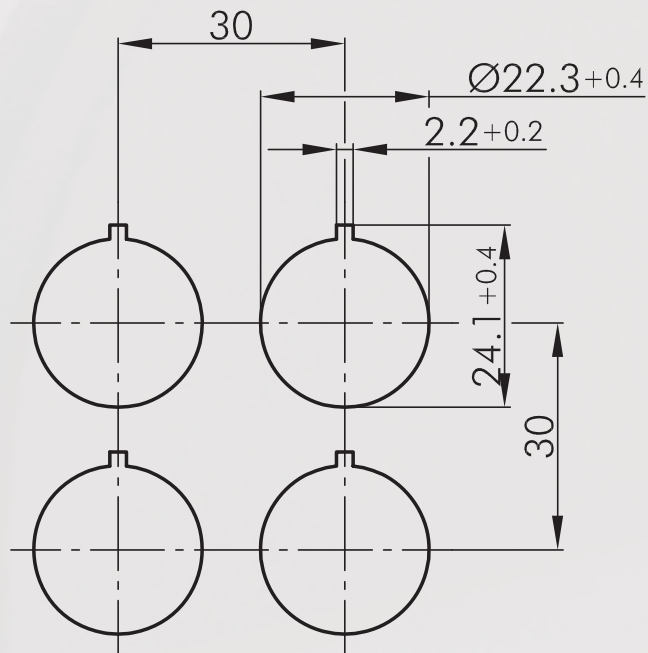
Terminal Blocks

Type Index

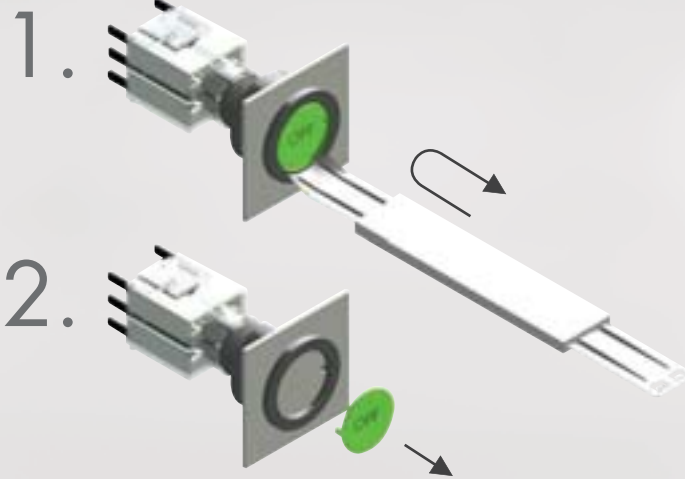
Mounting depth dimensions



Cutout dimensions



Mounting and service instructions



RX-JUWEL

Ø 22.3 mm

MADE IN GERMANY



About Us

Pushbuttons

lenses and nameplates to be ordered separately

Pushbuttons and Switches

Panel Mount Jacks

Emergency-Stop Buttons

Bus Technology

RFD

Enclosures

Pedal Switches

Terminal Blocks

Type Index

Illustration

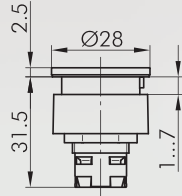
Dimensions

Description

Type

IP65

6 mm



Pushbutton head

suitable contact blocks:

A AZ B B... BZ BZ... B439

front bezel:

charcoal



RXJT

Accessories



Transparent lens

colour:

blue
yellow
green
clear
red
opal white



T20DBL
T20DGB
T20DGN
T20DKL
T20DRT
T20DWS



Concave lens, non-transparent

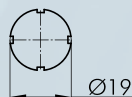
used for pushbuttons without inscription and illumination

colour:

blue
yellow
green
black
red
white



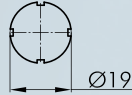
T20DGBL
T20DGGB
T20DGGN
T20DGSW
T20DGRT
T20DGWS



Nameplate with standard imprint

please specify index number(see nameplates from page 634)

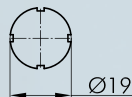
BSRX...



Nameplate with special imprint

according to customer's specification

BSRXB



Blank nameplate

BSRXU

IP67



Sealing cap

made of silicone rubber, down to -50°C

TK28S

Mushroom Pushbuttons

Illustration

Dimensions

Description

Type

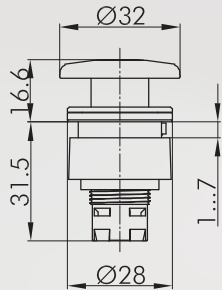


For further emergency stops, please refer to the chapter "Emergency-stop Heads" starting on page 594

The emergency-stop heads can also be supplied as latching mushroom heads with mushrooms in different colours.

IP65

6 mm



Mushroom head, momentary

Switching position indicator: no
Permissive Contact: no
Anti-lock collar: no

suitable contact blocks:

BUS A AZ BZ BZ_x CT CTF CTP

front bezel: charcoal

RXJS

Potentiometers

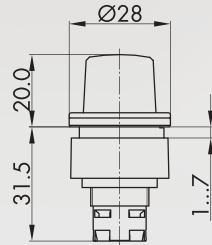
Illustration

Dimensions

Description

Type

IP65



Knob set for potentiometers

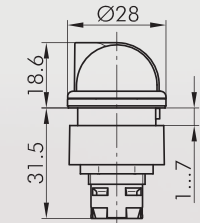
for potentiometers of 6 mm shaft dia. and thread M10 x 0.75
delivery without potentiometer
shaft length: approx. 50 mm ± 4 mm

front bezel: charcoal
knob colour: black



RXJR

IP65



Selector head, maintained

suitable contact blocks:

A **AZ** **BZ** **BZ.k** **CT** **CTF** **CTP**

front bezel: charcoal



RXJWA

suitable contact blocks:

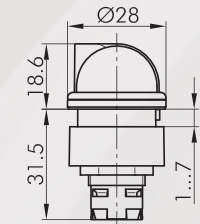
A **AZ**

front bezel: charcoal



RXJWB

IP65



Selector head, left maintained, right momentary

suitable contact blocks:

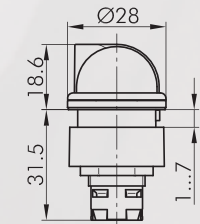
A **AZ**

front bezel: charcoal



RXJWC

IP65

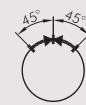


Selector head, momentary

suitable contact blocks:

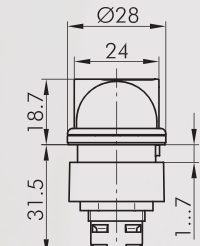
A **AZ**

front bezel: charcoal



RXJSTB

IP65



Illuminated selector head, maintained (two-piece plunger)

suitable contact blocks:

AZ **BZ** **BZ.k**

front bezel: charcoal



RXJZWBL_KL

Key Switches (momentary/maintained)

l = Switching position
> = Spring return
O = Key removable position

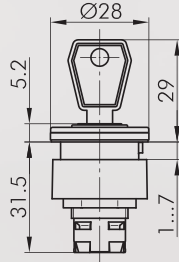
Illustration

Dimensions

Description

Type

IP65



Key actuator, maintained

including two keys
other lock types on request

suitable contact blocks:

A AZ

front bezel: charcoal



RXJSSA12E

suitable contact blocks:

A AZ

front bezel: charcoal



RXJSSA13E

suitable contact blocks:

A AZ BZ BZ.k CT CTF CTP

front bezel: charcoal



RXJSSA14E

suitable contact blocks:

A AZ BZ BZ.k CT CTF CTP

front bezel: charcoal



RXJSSA15E

suitable contact blocks:

A AZ BZ BZ.k CT CTF CTP

front bezel: charcoal



RXJSSA17E

suitable contact blocks:

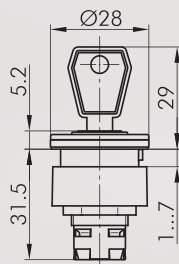
A AZ BZ BZ.k CT CTF CTP

front bezel: charcoal



RXJSSA18E

IP65



Key actuator, maintained (two-piece plunger)

including two keys
other lock types on request

suitable contact blocks:

AZ BZ BZ.k

front bezel: charcoal



RXJZSSA12E

suitable contact blocks:

AZ BZ BZ.k

front bezel: charcoal



RXJZSSA13E

Accessories



Spare key (standard)

standard spare key, specify key number for special locks

ESE845

Buzzers

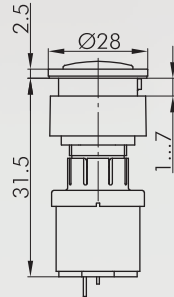
Illustration

Dimensions

Description

Type

IP65



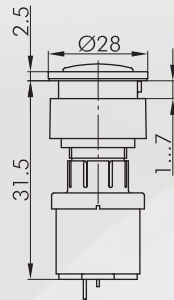
Buzzer

operating voltage: 12 ... 24V AC/DC
 operating current: 5mA (12V DC)
 16mA (24V DC)
 signal frequency: 3.8 +/- 0.5 kHz
 volume: max. 85 db (10 cm, 24V)
 max. 80 db (10 cm, 12V)
 operating temperature: -20°C ... 60°C
 Connection type: Faston terminals 2.8x0.8 mm

front bezel: charcoal

RXJNSG+SG-24V

IP65



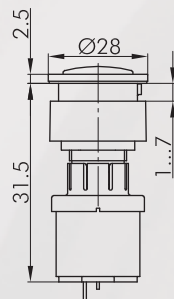
Interval buzzer

operating voltage: 12 ... 24V DC
 operating current: max. 30mA
 signal frequency: 3.5 +/- 0.5 kHz
 volume: max. 85 db (10 cm, 24V)
 max. 80 db (10 cm, 12V)
 intervall: 1s
 operating temperature: -20°C ... 60°C
 Connection type: Faston terminals 2.8x0.8 mm

front bezel: charcoal

RXJNSG+SGL-24V

IP65



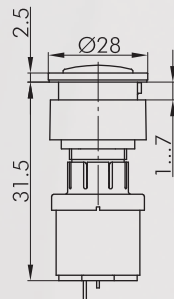
Illuminated buzzer

operating voltage: 12 ... 24V AC/DC
 operating current: abt. 30mA
 signal frequency: 3.5 +/- 0.5 kHz
 volume: max. 85 db (10 cm, 24V)
 max. 80 db (10 cm, 12V)
 operating temperature: -20°C ... +60°C
 Connection type: Faston terminals 2.8x0.8 mm

front bezel: charcoal

RXJNSGL+SGLR-24V

IP65



Illuminated interval buzzer

operating voltage: 12 ... 24V DC
 operating current: abt. 30mA
 signal frequency: 3.5 +/- 0.5 kHz
 volume: max. 85 db (10 cm, 24V)
 max. 80 db (10 cm, 12V)
 intervall: 1s
 operating temperature: -20°C ... +60°C
 Connection type: Faston terminals 2.8x0.8 mm

front bezel: charcoal

RXJNSGL+SGLR-24V

Accessories



Faston clamp 2.8 x 0.8 mm with snap-in pin

FH2,8

cross section 0.75 - 1.50 mm², tin-plated brass, with pin to snapfit into the sockets XA, XAL and the insulating case IH2.8

Buzzers

Illustration

Dimensions

Description

Type



Insulating case

for Faston clamp FH2,8, slip on from the front

IH2,8

About Us

→ Pushbuttons
and Switches

Panel Mount Jacks

Emergency-Stop Buttons

Bus Technology

RFID

Enclosures

Pedal Switches

Terminal Blocks

Type Index

Pilot Lights

lenses and nameplates to be ordered separately

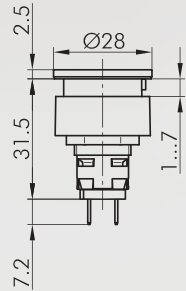
Illustration

Dimensions

Description

Type

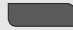
IP65



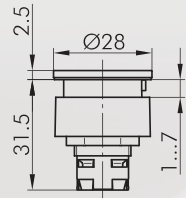
Pilot light with Faston terminals 2.8x0.8 mm

T5.5K socket

Connection type: Faston terminals 2.8x0.8 mm

front bezel: charcoal  **RXJL5**

IP65



Pilot light head

suitable lampholders:




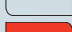


A **B** **B...K** **CTF** **CTP**

front bezel: charcoal  **RXJN**

Accessories









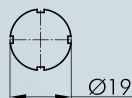
Convex lens

colour:	blue		KF20BL
	yellow		KF20GB
	green		KF20GN
	clear		KF20KL
	red		KF20RT
	white		KF20WS



Hemispherical lens

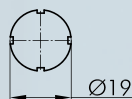
colour:	blue		KH20BL
	yellow		KH20GB
	green		KH20GN
	clear		KH20KL
	red		KH20RT
	opal white		KH20WS



Nameplate with standard imprint

please specify index number(see nameplates from page 634)

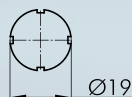
BSRX...



Nameplate with special imprint

according to customer's specification

BSRXB



Blank nameplate

BSRXU

Pilot Lights

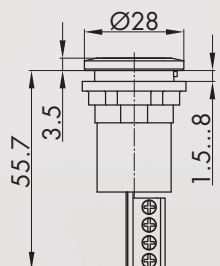
Illustration

Dimensions

Description

Type

IP65
IP67



LED switching position indicator, 3-coloured

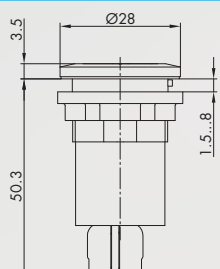
The switching position indicator is equipped with different LED colours (red, green, yellow). They can be used in symbol schematics in switching systems as well as in control rooms.

The pilot light has an integrated logic circuit. When connecting the voltage to V+ the yellow bar is illuminated. When connecting voltage to red or green, the illumination of the yellow bar switches off and the bar, red or green, being connected to voltage is illuminated
Connection: screw connection

Voltage: 24V
+48V - 60V DC
+110V - 125V DC
+220V DC

RXJN_FSB3_24V
RXJN_FSB3_48V
RXJN_FSB3_110V
RXJN_FSB3_220V

IP65
IP67



LED switching position indicator, 2-coloured

The switching position indicator is equipped with different LED colours (red, green).

They can be used in symbol schematics in switching systems as well as in control rooms.

Connection: cage clamp

Voltage: 24V
+48V - 60V DC
+110V - 125V DC
+220V DC

RXJN_FSB2_24V
RXJN_FSB2_48V
RXJN_FSB2_110V
RXJN_FSB2_220V

Accessories



Mounting tool 16

S16

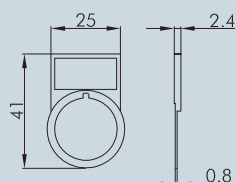
with torque limitation
for the series OKTRON, OKTRON-JUWEL, OKTRON-R,
RONTRON-R-JUWEL, RONTRON-Q-JUWEL, QUARTRON,
QUARTRON-JUWEL, RX-JUWEL



Mounting tool adapter with 1/4" connections

SRA

for mounting tools S16 and S22







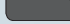
External nameplate holder

for outside marking of the actuators of the RX-JUWEL,
RONDEX-JUWEL series, accepts self-adhesive nameplates

colour: charcoal

RXJABT

Accessories for Pushbuttons and Switches

Illustration	Dimensions	Description	Type
		Self-adhesive nameplate laser-printed inscription according to customer's specification dimensions: 22 x 11 mm	BZ16L...
		Self-adhesive nameplate blank dimensions: 22 x 11 mm	BZ16U
		Self-adhesive nameplate with standard imprint please specify index number(see nameplates from page 634) dimensions: 22 x 11 mm	BZ16B...
		Yellow nameplate self-adhesive PVC foil printing on request outer dia. 75 mm for mounting dia. 22.3 mm	
		colour: yellow 	NAS_22
		Yellow nameplate with quadrilingual imprint self-adhesive PVC foil outer dia. 75 mm for mounting dia. 22.3 mm	
		colour: yellow 	NAS_22_548
		Universal lens remover	USK
		Round dummy to close unused mounting apertures	
IP65		colour: charcoal 	BVRXJ

About Us

→ Pushbuttons
and Switches

Panel Mount Jacks

Emergency-Stop Buttons

Bus Technology

RFID

Enclosures

Pedal Switches

Terminal Blocks

Type Index