



Front dimensions: \varnothing 28 mm
Panel cut-out: \varnothing 22.3 mm
Front bezel height: 12 mm
Travel: 6 mm



RONDEX

 Product configurator



Overview RONDEX series



01 Pushbutton heads	page 232	07 Key actuators	page 238
02 Emergency-stop heads	page 234	08 Buzzers	page 239
03 Mushroom heads	page 235	09 Pilot light heads / pilot lights	page 240
04 Knob set for potentiometers	page 236	Contact blocks/lampholders	page 414
05 Selector heads/knob set for rotary switches	page 236		
06 Toggle heads	page 237		

Housing colour



degree of protection



operating travel



tactile

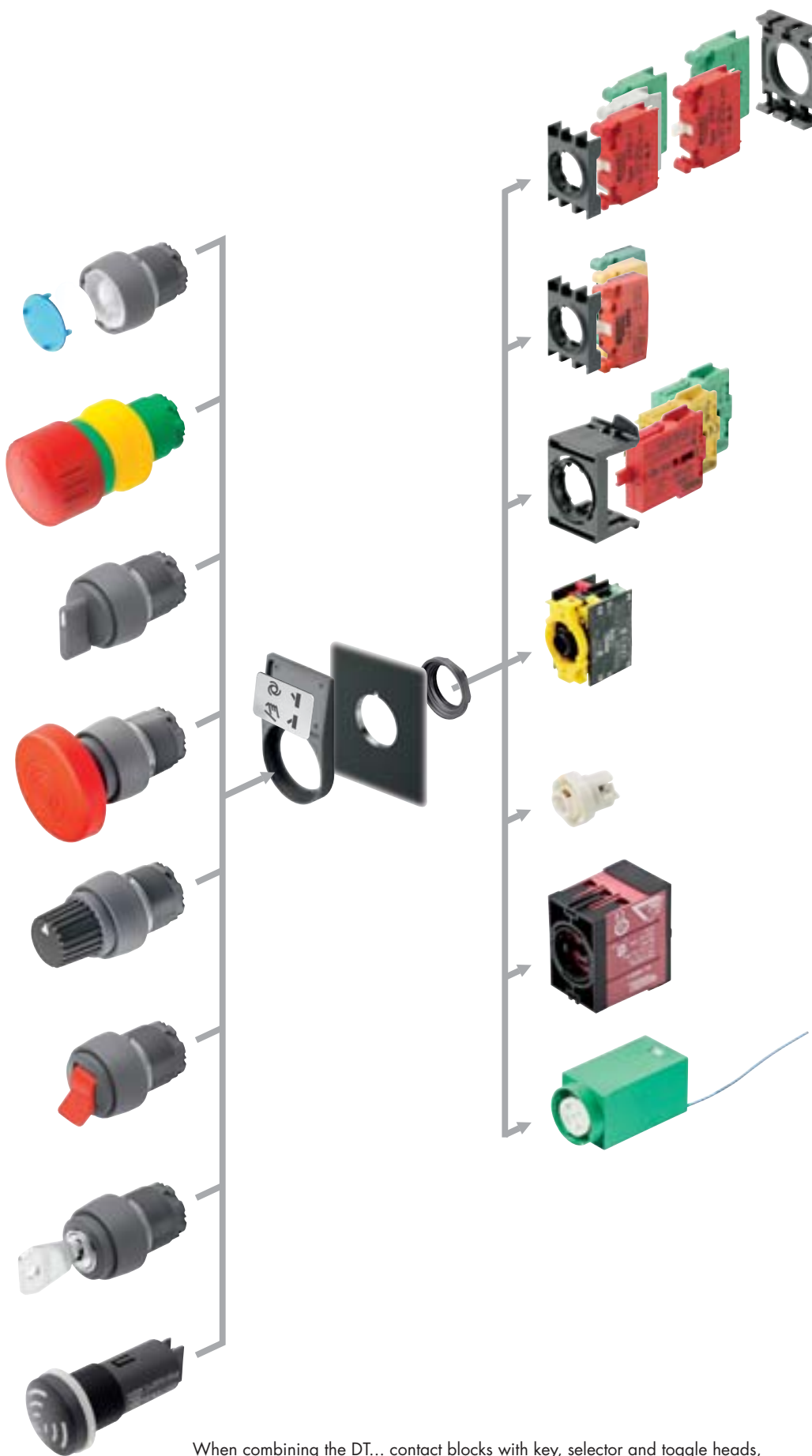


illuminating option



labelling option





DT
DT...
Modular contact
blocks
spring-clamp
connection
page 548

DS
DS...
Modular contact
blocks
push-in connection
page 542

M
MT...
Modular contact
blocks
screw connection
page 534

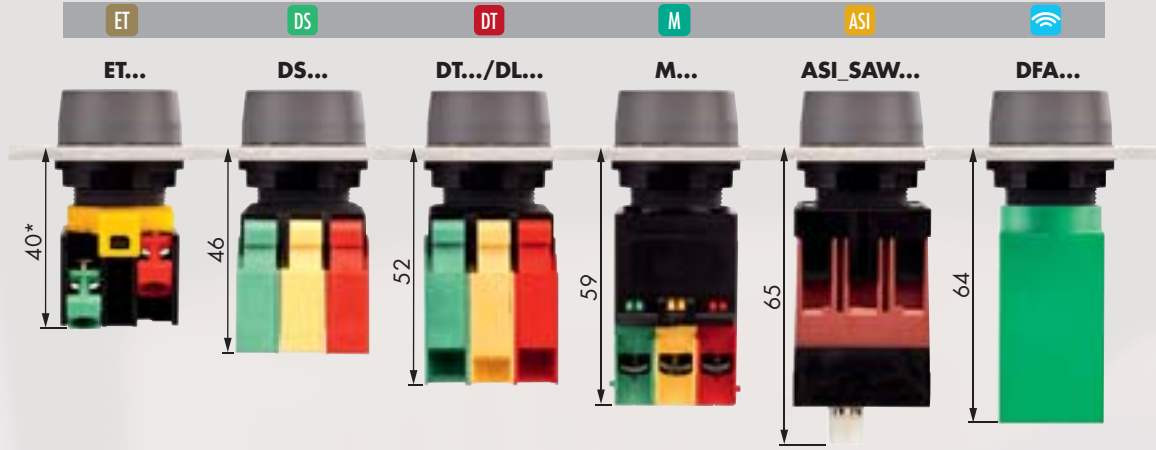
ET
ET...
Monobloc contact
blocks
screw connection
page 528

ASI
ASI...
Contact blocks
for AS-Interface
Safety @ Work
page 560

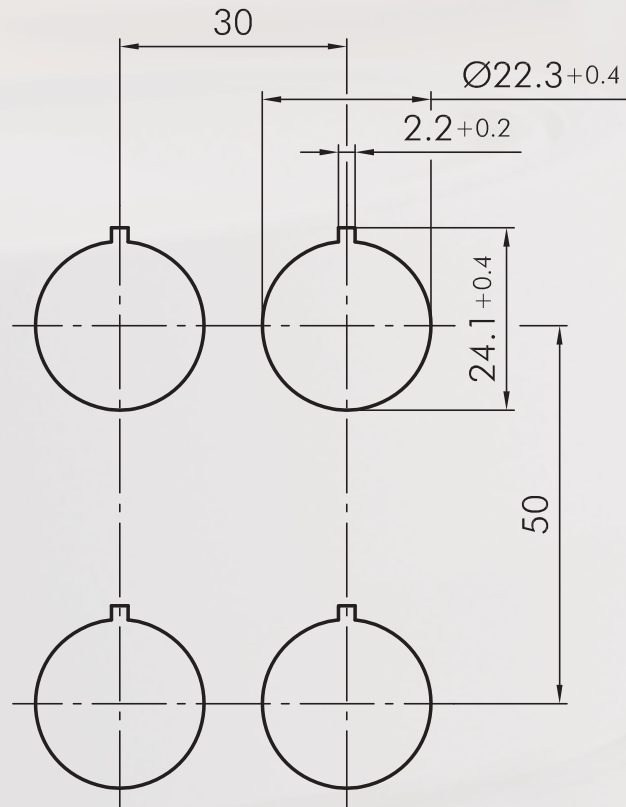
DFA
DFA...
Battery-free wireless
transmitter modules
page 566

When combining the DT... contact blocks with key, selector and toggle heads, please add ..._497 to the actuator type reference!

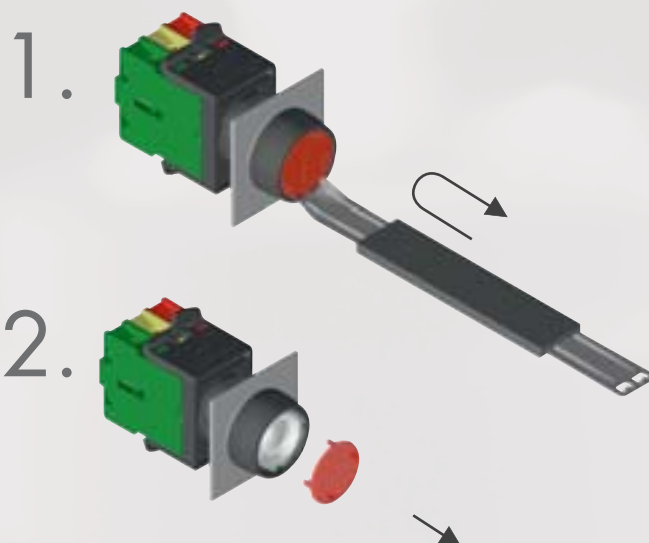
Mounting depth dimensions



Cutout dimensions



Mounting and service instructions



Pushbuttons

lenses and nameplates to be ordered separately

Illustration

Dimensions

Description

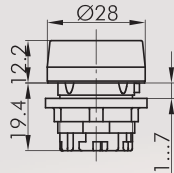
Type

IP65

6 mm

☀

🔧



Pushbutton head

suitable contact blocks:

☑ DS DT ET M

front bezel:

charcoal



RT

Accessories



Flat lens, transparent

colour:

blue



TG22BL

yellow



TG22GB

green



TG22GN

clear



TG22KL

red



TG22RT

opal white



TG22WS



Flat lens, non-transparent

used for pushbuttons without inscription and illumination

colour:

blue



TG22GBL

yellow



TG22GGB

green



TG22GGN

black



TG22GSW

red



TG22GRT

white



TG22GWS



High lens, transparent

colour:

blue



KH23BL

yellow



KH23GB

green



KH23GN

clear



KH23KL

red



KH23RT

opal white



KH23WS



High lens, non-transparent

used for pushbuttons without inscription and illumination

colour:

blue



TG22GHBL

yellow



TG22GHGB

green



TG22GHGN

black



TG22GHSW

red

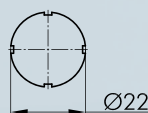


TG22GHRT

white



TG22GHWS



Nameplate with standard imprint

please specify index number (see nameplates from page 634)

BSK...

Pushbuttons

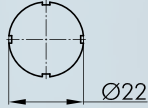
lenses and nameplates to be ordered separately

Illustration

Dimensions

Description

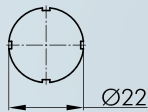
Type



Nameplate with special imprint

according to customer's specification

BSKB

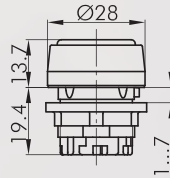


Blank nameplate

BSKU

IP67

6 mm



Membrane pushbutton head

with tightly closed, transparent silicone cap, down to -50° C

suitable contact blocks:

DS DT ET M

front bezel: charcoal

RTM

Accessories



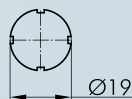
Flat lens, transparent

colour:

blue
yellow
green
clear
red
opal white



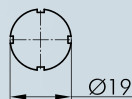
T20FBL
T20FGB
T20FGN
T20FKL
T20FRT
T20FWS



Nameplate with standard imprint

please specify index number (see nameplates from page 634)

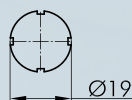
BSRX...



Nameplate with special imprint

according to customer's specification

BSRXB



Blank nameplate

BSRXU

IP67



Sealing cap

made of silicone rubber, down to -50°C

TK29S

Pushbuttons

Illustration

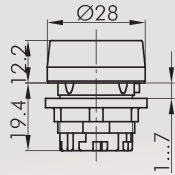
Dimensions

Description

Type

IP65

↓ 6 mm



Economy pushbutton head

no inscription, no illumination

suitable contact blocks:

DS DT ET M

front bezel:	charcoal		
lens:	green		RTG
front bezel:	charcoal		
lens:	red		RTR
front bezel:	charcoal		
lens:	black		RTS
front bezel:	charcoal		
lens:	white		RTW
front bezel:	charcoal		
lens:	yellow		RTY
front bezel:	charcoal		
lens:	blue		RTB



For further emergency stops, please refer to the chapter "Emergency-stop Heads" starting on page 594

The emergency-stop heads can also be supplied as latching mushroom heads with mushrooms in different colours.

Mushroom Pushbuttons

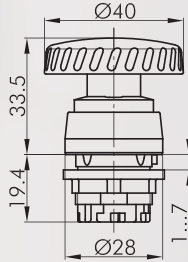
Illustration

Dimensions

Description

Type

IP65



Mushroom head, latch-type

other mushroom colours on request
must be mounted onto yellow background

Foolproof:	no
Switching position indicator:	no
Permissive Contact:	no
Anti-lock collar:	no
Release:	twist
Standard:	EN 60947-5-1, EN 60947-5-5, EN ISO 13850



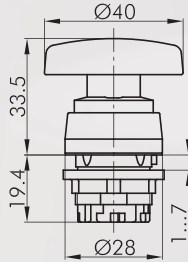
suitable contact blocks:



front bezel:	charcoal	
Mushroom head:	red	

RV

IP65



Mushroom head, momentary

other mushroom colours on request
Switching position indicator: no
Permissive Contact: no
Anti-lock collar: no

suitable contact blocks:


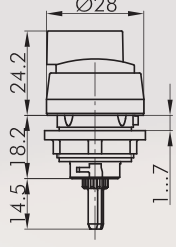

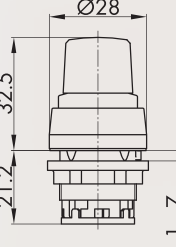

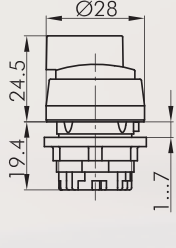



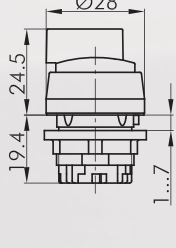



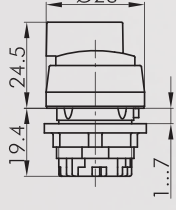



front bezel:	charcoal	
Mushroom head:	red	
front bezel:	charcoal	
Mushroom head:	black	

RS

RS_SW.PILZ

Knob Sets for Rotary Switches

Illustration	Dimensions	Description	Type
		<p>Knob set for rotary switches, without inscription for Kraus & Naimer types CG4 and CA4 other versions on request</p> <p>front bezel: charcoal</p>	RDA
		<p>Knob set for potentiometers for potentiometers of 6 mm shaft dia. and thread M10 x 0.75 delivery without potentiometer shaft length: approx. 50 mm ± 2 mm incl. fastening thread</p> <p>front bezel: charcoal</p>	RR
		<p>Selector head, maintained</p> <p>suitable contact blocks: DS DT ET M</p> <p>front bezel: charcoal</p> <p>suitable contact blocks: DT ET M</p> <p>front bezel: charcoal</p>	 RWA  RWB
		<p>Selector head, momentary</p> <p>suitable contact blocks: DS DT ET M</p> <p>front bezel: charcoal</p> <p>suitable contact blocks: DT ET M</p> <p>front bezel: charcoal</p>	 RSTA  RSTB
		<p>Selector head, left maintained, right momentary</p> <p>suitable contact blocks: DT ET M</p> <p>front bezel: charcoal</p>	 RWC

Selector Switches (momentary/maintained)

I = Switching position
> = Spring return

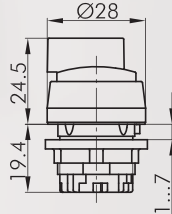
Illustration

Dimensions

Description

Type

IP65



Illuminated selector head, maintained

inclusive five small, transparent colour plates in red, yellow, green, white and blue

suitable contact blocks:

DS DT ET M

front bezel: charcoal



RWAL

suitable contact blocks:

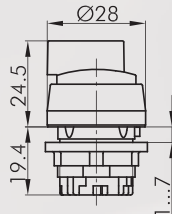
DS DT ET M

front bezel: charcoal



RWBL

IP65



Illuminated selector head, left maintained, right momentary

inclusive four small, transparent colour plates in red, yellow, green and blue

suitable contact blocks:

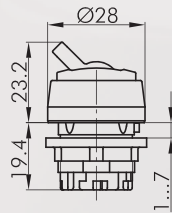
DS DT ET M

front bezel: charcoal



RWCL

IP65



Toggle head

red toggle (other colours on request)

suitable contact blocks:

DS DT ET M

front bezel: charcoal

Knob colour: red


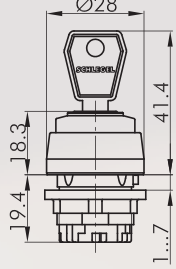
RK

Key Switches (momentary/maintained)


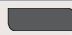

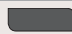


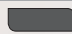


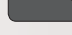

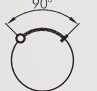
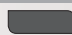


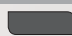
I = Switching position
> = Spring return
O = Key removable position

Illustration	Dimensions	Description	Type
--------------	------------	-------------	------


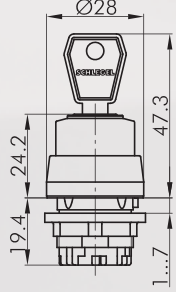
IP65





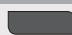
Key actuator, maintained
including two keys
other lock types on request

suitable contact blocks:	DT ET M		
front bezel:	charcoal		RSSA12E
suitable contact blocks:	DT ET M		
front bezel:	charcoal		RSSA13E
suitable contact blocks:	 DS DT ET M		
front bezel:	charcoal		RSSA14E
suitable contact blocks:	 DS DT ET M		
front bezel:	charcoal		RSSA15E
suitable contact blocks:	 DS DT ET M		
front bezel:	charcoal		RSSA17E
suitable contact blocks:	 DS DT ET M		
front bezel:	charcoal		RSSA18E


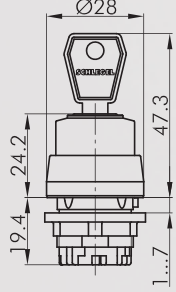
IP65


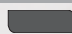
Key actuator, momentary
including two keys
other lock types on request

suitable contact blocks:	DT ET M		
front bezel:	charcoal		RSSA23E
suitable contact blocks:	 DS DT ET M		
front bezel:	charcoal		RSSA27E

IP65

Key actuator, left maintained, right momentary
including two keys
other lock types on request

suitable contact blocks:	DT ET M		
front bezel:	charcoal		RSSA24E

Buzzers

Illustration

Dimensions

Description

Type

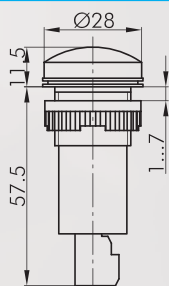
Accessories



Spare key (standard)

ESE845

standard spare key, specify key number for special locks



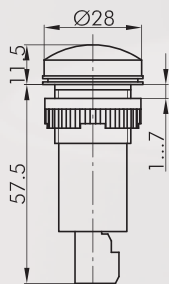
Buzzer 230V

operating voltage: 230V~
volume: 80 dB at 10 cm distance
mounting depth: 60 mm
max. ambient temperature: -20°C up to 50°C
service life: > 5000 h

front bezel: black



RSG-230V



Buzzer 24V

operating voltage: 18 - 30V AC/DC
volume: 80 dB at 10 cm distance
mounting depth: 60 mm
max. ambient temperature: -20°C up to 50°C
service life: > 5000 h

front bezel: black



RSG-24V

About Us

→ Pushbuttons
and Switches

Panel Mount Jacks

Emergency-Stop Buttons

Bus Technology

RFID

Enclosures

Pedal Switches

Terminal Blocks

Type Index

RONDEX

Ø 22.3 mm

MADE IN GERMANY



Pilot Lights

lenses and nameplates to be ordered separately

- About Us
- Contact Blocks
- Busbarriers/Switches
- Panel Mount Jacks
- Emergency-Stop Buttons
- Bus Technology
- RFD
- Enclosures
- Pedal Switches
- Terminal Blocks
- Type Index

Illustration	Dimensions	Description	Type
--------------	------------	-------------	------

<p>IP65</p>		<p>Ø28 12.2 19.4 1...7</p>	<p>Pilot light head</p> <p>suitable lampholders: DS DT ET M</p> <p>front bezel: charcoal </p>	<p>RN</p>
-------------	--	--	---	-----------

Accessories

	<p>Convex lens</p> <p>colour:</p> <table style="width: 100%;"> <tr> <td style="width: 30%;">blue</td> <td style="width: 10%;"></td> <td style="width: 30%;">KF23BL</td> </tr> <tr> <td>yellow</td> <td></td> <td>KF23GB</td> </tr> <tr> <td>green</td> <td></td> <td>KF23GN</td> </tr> <tr> <td>clear</td> <td></td> <td>KF23KL</td> </tr> <tr> <td>red</td> <td></td> <td>KF23RT</td> </tr> <tr> <td>opal white</td> <td></td> <td>KF23WS</td> </tr> </table>	blue		KF23BL	yellow		KF23GB	green		KF23GN	clear		KF23KL	red		KF23RT	opal white		KF23WS
blue		KF23BL																	
yellow		KF23GB																	
green		KF23GN																	
clear		KF23KL																	
red		KF23RT																	
opal white		KF23WS																	

	<p>High lens, transparent</p> <p>colour</p> <table style="width: 100%;"> <tr> <td style="width: 30%;">blue</td> <td style="width: 10%;"></td> <td style="width: 30%;">KH23BL</td> </tr> <tr> <td>yellow</td> <td></td> <td>KH23GB</td> </tr> <tr> <td>green</td> <td></td> <td>KH23GN</td> </tr> <tr> <td>clear</td> <td></td> <td>KH23KL</td> </tr> <tr> <td>red</td> <td></td> <td>KH23RT</td> </tr> <tr> <td>opal white</td> <td></td> <td>KH23WS</td> </tr> </table>	blue		KH23BL	yellow		KH23GB	green		KH23GN	clear		KH23KL	red		KH23RT	opal white		KH23WS
blue		KH23BL																	
yellow		KH23GB																	
green		KH23GN																	
clear		KH23KL																	
red		KH23RT																	
opal white		KH23WS																	

	<p>Ø22</p>	<p>Nameplate with standard imprint</p> <p>please specify index number (see nameplates from page 634)</p>	<p>BSK...</p>
--	------------	---	---------------

	<p>Ø22</p>	<p>Nameplate with special imprint</p> <p>according to customer's specification</p>	<p>BSKB</p>
--	------------	---	-------------

	<p>Ø22</p>	<p>Blank nameplate</p>	<p>BSKU</p>
--	------------	-------------------------------	-------------

Pilot Lights

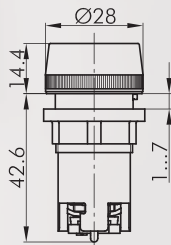
Illustration

Dimensions

Description

Type

IP65



Pilot light with screw connections

RL9G

BA9s socket

Connection type: screw connection 2x2.5mm²

Accessories



Panoramic lens

colour:

blue
yellow
green
clear
red
white



KG22BL
KG22GB
KG22GN
KG22KL
KG22RT
KG22WS



Mega-bright LED, BA9s

with integrated bridge rectifier for 24V .. 28V AC/DC, 15.5mA (typ. 24V)

colour:

white



LD9-24MW

About Us

→ Pushbuttons
and Switches

Panel Mount Jacks

Emergency-Stop Buttons

Bus Technology

RFID

Enclosures

Pedal Switches

Terminal Blocks

Type Index