



Front dimensions: Ø 28 mm
Panel cut-out: Ø 22.3 mm
Front bezel height: 12 mm
Travel: 6 mm





 Product configurator



RONDEX-M

RONDEX-M

Ø 22.3 mm

MADE IN GERMANY



About Us

→ Pushbuttons and Switches

Panel Mount Jacks

Emergency-Stop Buttons

Bus Technology

RFD

Enclosures

Pedal Switches

Terminal Blocks

Type Index

Overview RONDEX-M series



01 Pushbutton heads	page 248	07 Key actuators	page 253
02 Emergency-stop heads	page 250	08 Buzzers	page 254
03 Mushroom heads	page 250	09 Pilot light heads / pilot lights	page 255
04 Knob set for potentiometers	page 251	Contact blocks/lampholders	page 414
05 Selector heads	page 251		
06 Toggle heads	page 252		

Housing colour



degree of protection



operating travel



tactile

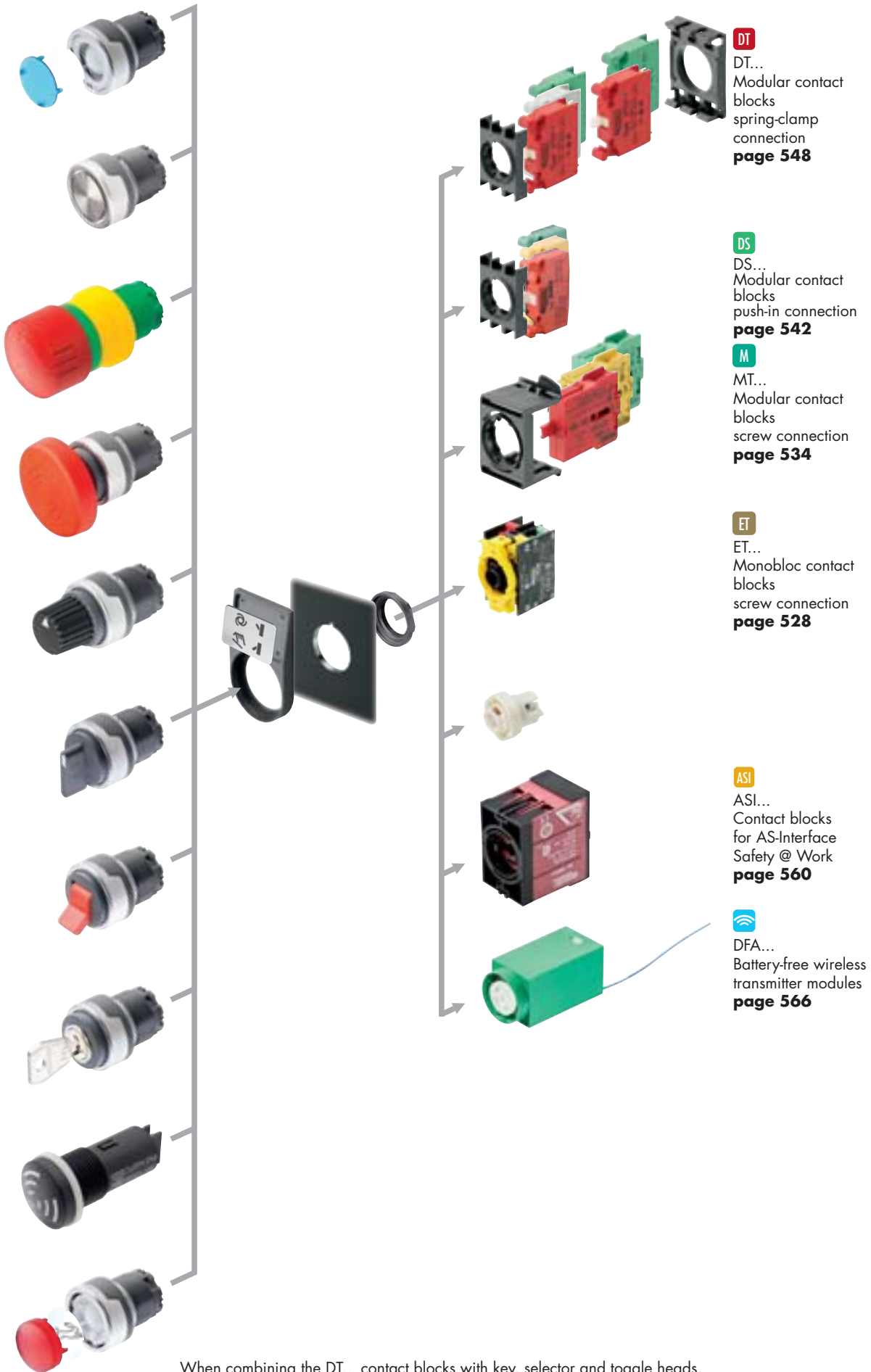


illuminating option



labelling option





When combining the DT... contact blocks with key, selector and toggle heads, please add ..._497 to the actuator type reference!

RONDEX-M

Ø 22.3 mm

MADE IN GERMANY

SCHLEGEL
ELEKTROKONTAKT

About Us

Pushbuttons
and Switches

Panel Mount Jacks

Emergency-Stop Buttons

Bus Technology

RFD

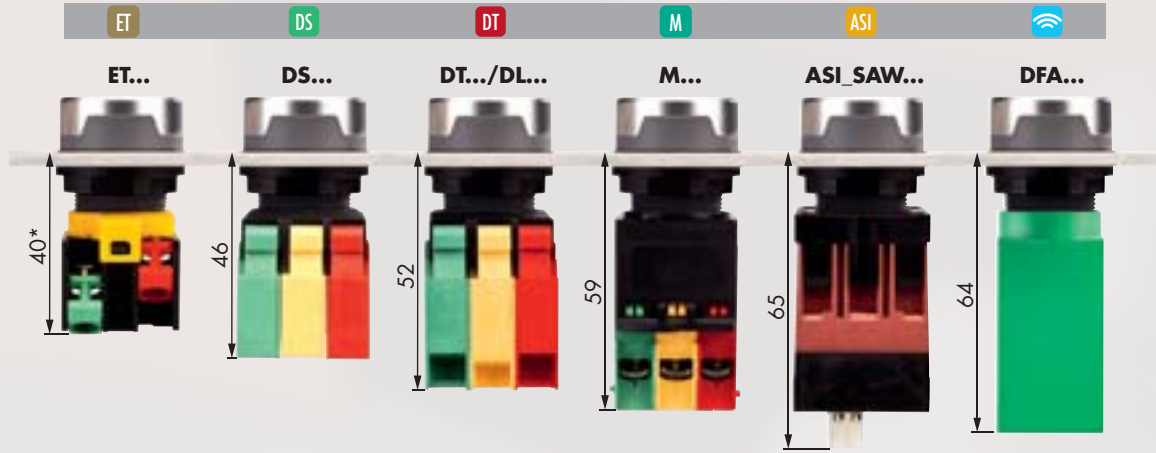
Enclosures

Pedal Switches

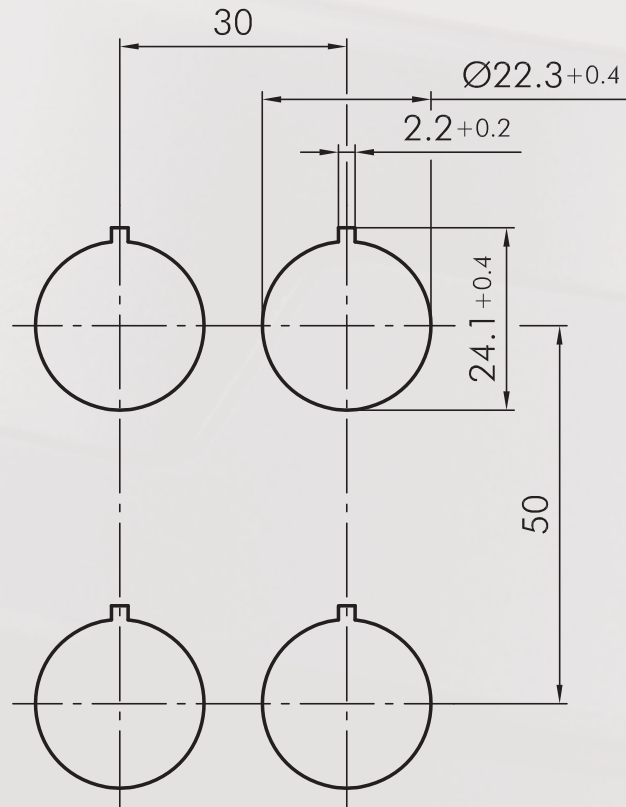
Terminal Blocks

Type Index

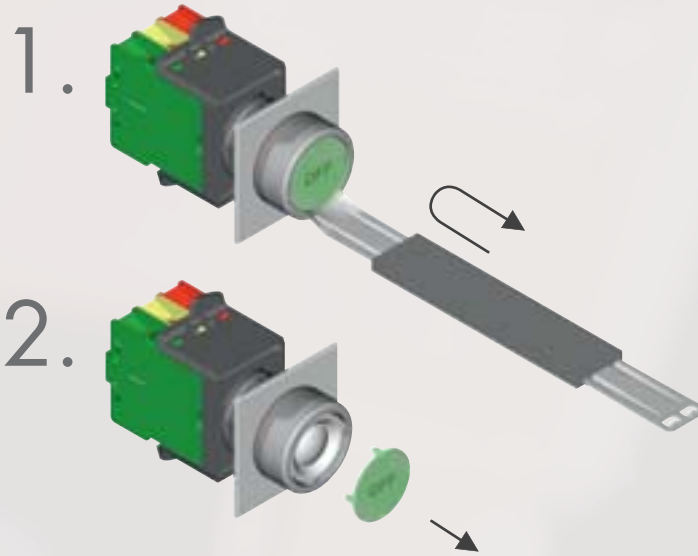
Mounting depth dimensions



Cutout dimensions



Mounting and service instructions



RONDEX-M

Ø 22.3 mm

MADE IN GERMANY



About Us

Pushbuttons and Switches

Panel Mount Jacks

Emergency-Stop Buttons

Bus Technology

RFD

Enclosures

Pedal Switches

Terminal Blocks

Type Index

Pushbuttons

lenses and nameplates to be ordered separately

Illustration

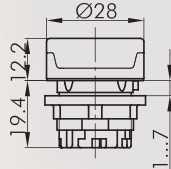
Dimensions

Description

Type

IP65

6 mm



Pushbutton head

suitable contact blocks:

DS DT ET M

front bezel:

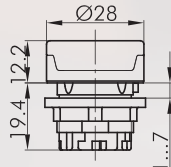
metallic/charcoal



RMCT

IP65

6 mm



Pushbutton head with ring illumination

incl. lens, inscription on request

suitable contact blocks:

DS DT ET M

front bezel:

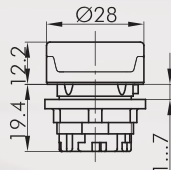
metallic/charcoal



RMCTLR

IP65

6 mm



Pushbutton head with latching function

suitable contact blocks:

DS DT ET M

front bezel:

metallic/charcoal



RMCF

Accessories



Flat lens, transparent

colour:

blue



TG22BL

yellow



TG22GB

green



TG22GN

clear



TG22KL

red



TG22RT

opal white



TG22WS



Flat lens, non-transparent

used for pushbuttons without inscription and illumination

colour:

blue



TG22GBL

yellow



TG22GGB

green



TG22GGN

black



TG22GSW

red



TG22GRT

white



TG22GWS



High lens, transparent

colour

blue



KH23BL

yellow



KH23GB

green



KH23GN

clear



KH23KL

red



KH23RT

opal white



KH23WS

Pushbuttons

Illustration

Dimensions

Description

Type



High lens, non-transparent

used for pushbuttons without inscription and illumination

colour:

blue

yellow

green

black

red

white



TG22GHBL

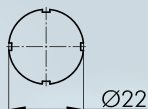
TG22GHGB

TG22GHGN

TG22GHSW

TG22GHRT

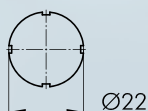
TG22GHWS



Nameplate with standard imprint

please specify index number (see nameplates from page 634)

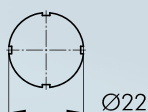
BSK...



Nameplate with special imprint

according to customer's specification

BSKB



Blank nameplate

BSKU

IP67



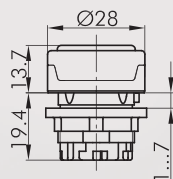
Sealing cap

made of silicone rubber, down to -50°C

TK29S

IP67

6mm



Membrane pushbutton head

with tightly closed, transparent silicone cap, down to -50 C

suitable contact blocks:



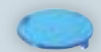
front bezel:

metallic/charcoal



RMCTM

Accessories



Flat lens, transparent

colour:

blue

yellow

green

clear

red

opal white



T20FBL

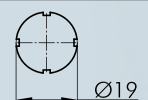
T20FGB

T20FGN

T20FKL

T20FRT

T20FWS



Nameplate with standard imprint

please specify index number(see nameplates from page 634)

BSRX...

RONDEX-M

Ø 22.3 mm

MADE IN GERMANY



About Us

Pushbuttons and Switches

Panel Mount Jacks

Emergency-Stop Buttons

Bus Technology

RFD

Enclosures

Pedal Switches

Terminal Blocks

Type Index

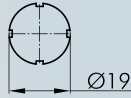
Mushroom Pushbuttons

Illustration

Dimensions

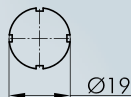
Description

Type



Nameplate with special imprint
according to customer's specification

BSRXB



Blank nameplate

BSRXU

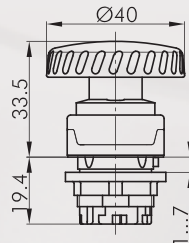


For further emergency stops, please refer to the chapter "Emergency-stop Heads" starting on page 594

The emergency-stop heads can also be supplied as latching mushroom heads with mushrooms in different colours.

IP65

6 mm



Mushroom head, latch-type

other mushroom colours on request
must be mounted onto yellow background

Foolproof: no
Switching position indicator: no
Permissive Contact: no
Anti-lock collar: no
Release: twist
Standard: EN 60947-5-1, EN 60947-5-5, EN ISO 13850

suitable contact blocks:

DS DT ET M

front bezel: metallic/charcoal

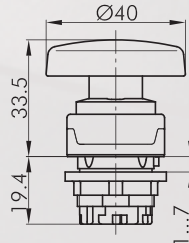
Mushroom head: red



RMCV

IP65

6 mm



Mushroom head, momentary

other mushroom colours on request

Switching position indicator: no
Permissive Contact: no
Anti-lock collar: no

suitable contact blocks:

DS DT ET M

front bezel: metallic/charcoal

Mushroom head: red



RMCS

Potentiometers

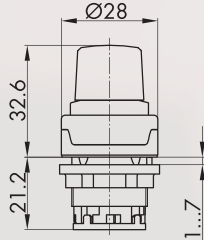
Illustration

Dimensions

Description

Type

IP65



Knob set for potentiometers

for potentiometers of 6 mm shaft dia. and thread M10x0.75
delivery without potentiometer
shaft length: approx. 50 mm ± 2 incl. fastening thread

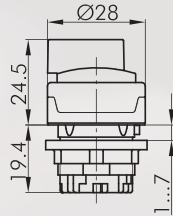
front bezel:

metallic/charcoal



RMCR

IP65



Selector head, maintained

suitable contact blocks:

DS DT ET M

front bezel:

metallic/charcoal



RMCWA



suitable contact blocks:

DT ET M

front bezel:

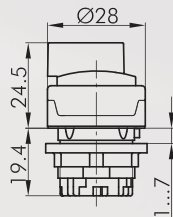
metallic/charcoal



RMCWB



IP65



Selector head, momentary

suitable contact blocks:

DS DT ET M

front bezel:

metallic/charcoal



RMCSA



suitable contact blocks:

DT ET M

front bezel:

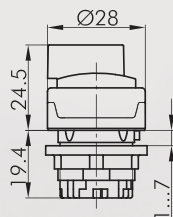
metallic/charcoal



RMCSB



IP65



Selector head, left maintained, right momentary

suitable contact blocks:

DT ET M

front bezel:

metallic/charcoal



RMCWC



RONDEX-M

Ø 22.3 mm

MADE IN GERMANY



About Us

Selector Switches (momentary/maintained)

I = Switching position
> = Spring return

Pushbuttons
and Switches

Panel Mount Jacks

Emergency-Stop Buttons

Bus Technology

RFD

Enclosures

Pedal Switches

Terminal Blocks

Type Index

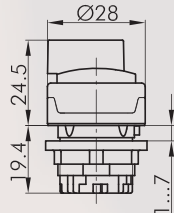
Illustration

Dimensions

Description

Type

IP65



Selector head, maintained

inclusive four small transparent colour plates in red, yellow, green and blue

suitable contact blocks:

DS DT ET M

front bezel: metallic/charcoal



RM CWAL

suitable contact blocks:

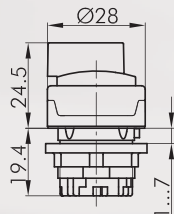
DT ET M

front bezel: metallic/charcoal



RM CWBL

IP65



Illuminated selector head, left maintained, right momentary

inclusive four small transparent colour plates in red, yellow, green and blue

suitable contact blocks:

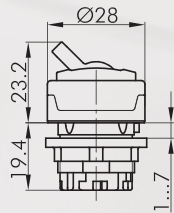
DS DT ET M

front bezel: metallic/charcoal



RM CWCL

IP65



Toggle head

with red toggle (other colours on request)

suitable contact blocks:

DS DT ET M

front bezel: metallic/charcoal

Knob colour: red



RMCK

Key Switches (momentary/maintained)

I = Switching position
> = Spring return
O = Key removable position

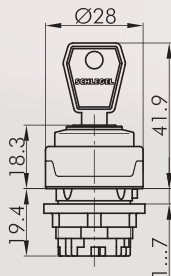
Illustration

Dimensions

Description

Type

IP65



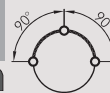
Key actuator, maintained

including two keys
other lock types on request

suitable contact blocks:

DT ET M

front bezel: metallic/charcoal

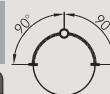


RMCSSA12E

suitable contact blocks:

DT ET M

front bezel: metallic/charcoal



RMCSSA13E

suitable contact blocks:

DS DT ET M

front bezel: metallic/charcoal



RMCSSA14E

suitable contact blocks:

DS DT ET M

front bezel: metallic/charcoal



RMCSSA15E

suitable contact blocks:

DS DT ET M

front bezel: metallic/charcoal

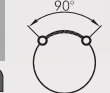


RMCSSA17E

suitable contact blocks:

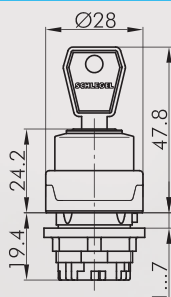
DS DT ET M

front bezel: metallic/charcoal



RMCSSA18E

IP65



Key actuator, momentary

including two keys
other lock types on request

suitable contact blocks:

DT ET M

front bezel: metallic/charcoal



RMCSSA23E

suitable contact blocks:

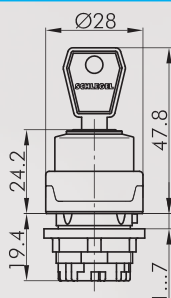
DS DT ET M

front bezel: metallic/charcoal



RMCSSA27E

IP65



Key actuator, left maintained, right momentary

including two keys
other lock types on request

suitable contact blocks:

DT ET M

front bezel: metallic/charcoal



RMCSSA24E

Buzzers

Illustration

Dimensions

Description

Type

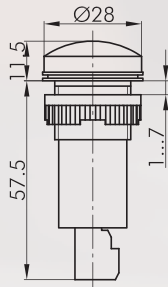
Accessories



Spare key (standard)

standard spare key, specify key number for special locks

ESE845



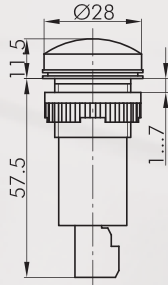
Buzzer 230V

operating voltage: 230V~
volume: 80 dB at 10 cm distance
mounting depth: 60 mm
max. ambient temperature: -20°C up to 50°C
service life: > 5000 h

front bezel: black



RSG-230V



Buzzer 24V

operating voltage: 18 - 30V AC/DC
volume: 80 dB at 10 cm distance
mounting depth: 60 mm
max. ambient temperature: -20°C up to 50°C
service life: > 5000 h

front bezel: black



RSG-24V

Pilot Lights

lenses and nameplates to be ordered separately

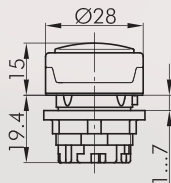
Illustration

Dimensions

Description

Type

IP65



Pilot light head

suitable lampholders:

DS DT ET M

front bezel:

metallic/charcoal



RMCN

Accessories



Convex lens

colour:

blue
yellow
green
clear
red
opal white



KF23BL
KF23GB
KF23GN
KF23KL
KF23RT
KF23WS



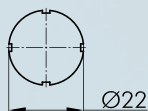
High lens, transparent

colour:

blue
yellow
green
clear
red
opal white



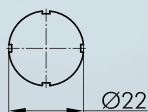
KH23BL
KH23GB
KH23GN
KH23KL
KH23RT
KH23WS



Nameplate with standard imprint

please specify index number (see nameplates from page 634)

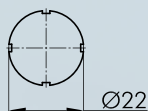
BSK...



Nameplate with special imprint

according to customer's specification

BSKB



Blank nameplate

BSKU





Mounting tool 22

with torque limitation


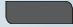
for the series QUARTEX-R(-JUWEL), KOMBITAST-R-JUWEL, RONDEX, RONDEX-M, RONDEX-JUWEL, RVA, DUX-Basic, SHORTRON, jacks of the ranges RONTRON-R/-Q-JUWEL

S22

Accessories for Pushbuttons and Switches

Illustration	Dimensions	Description	Type
		Mounting tool adapter with 1/4" connections for mounting tools S16 and S22	SRA
		External nameplate holder for outside marking of the actuators of the RONDEX series, accepts self-adhesive nameplates colour: charcoal 	RABT
		Self-adhesive nameplate, laser-printed inscription according to customer's specification dimensions: 19 x 27 mm	BZ23L...
		Self-adhesive nameplate blank dimensions: 19 x 27 mm	BZ23U
		Self-adhesive nameplate with standard imprint please specify index number(see nameplates from page 634) dimensions: 19 x 27 mm	BZ23B...
		Yellow nameplate self-adhesive PVC foil printing on request outer dia. 75 mm for mounting dia. 22.3 mm colour: yellow 	NAS_22
		Yellow nameplate with quadrilingual imprint self-adhesive PVC foil outer dia. 75 mm for mounting dia. 22.3 mm colour: yellow 	NAS_22_548
		Universal lens remover	USK

Accessories for Pushbuttons and Switches

Illustration	Dimensions	Description	Type
		<p>Dummy to close unused mounting apertures</p> <p>colour: charcoal </p>	BVR22