

front dimensions: 30 x 30 mm
Panel cut-out: Ø 22.3 mm
front bezel height: 12 mm
Travel: 6 mm





QUARTEX-R

 Product configurator



Overview QUARTEX-R series



01 Pushbutton heads	page 302	07 Key actuators	page 308
02 Emergency-stop heads	page 305	08 Pilot light heads / pilot lights	page 309
03 Mushroom heads	page 305	Contact blocks/lampholders	page 414
04 Knob set for potentiometers	page 306		
05 Selector heads/knob set for rotary switches	page 307		
06 Toggle heads	page 307		

Housing colour



degree of protection



operating travel



tactile

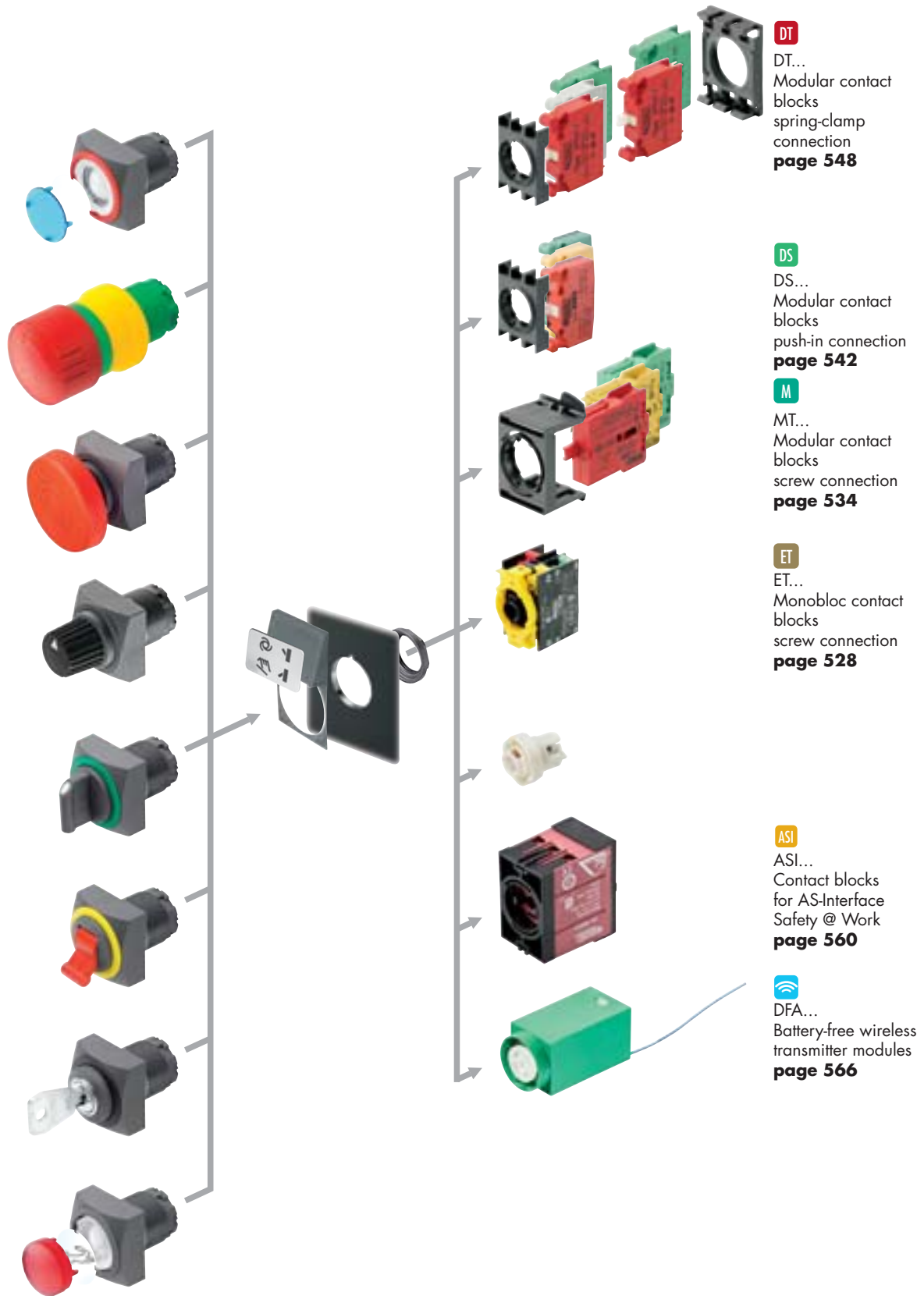


illuminating option



labelling option





DT
DT...
Modular contact
blocks
spring-clamp
connection
page 548

DS
DS...
Modular contact
blocks
push-in connection
page 542

M
MT...
Modular contact
blocks
screw connection
page 534

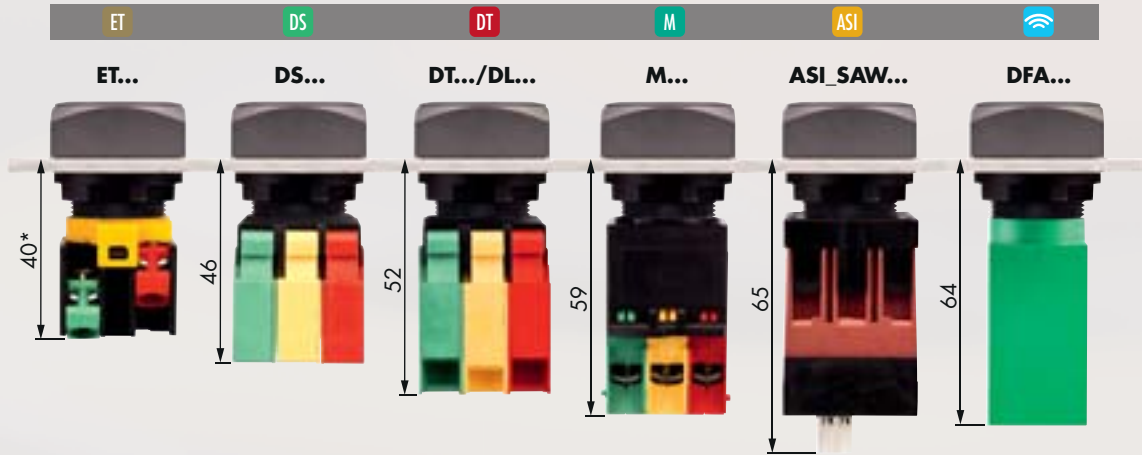
ET
ET...
Monobloc contact
blocks
screw connection
page 528

ASI
ASI...
Contact blocks
for AS-Interface
Safety @ Work
page 560

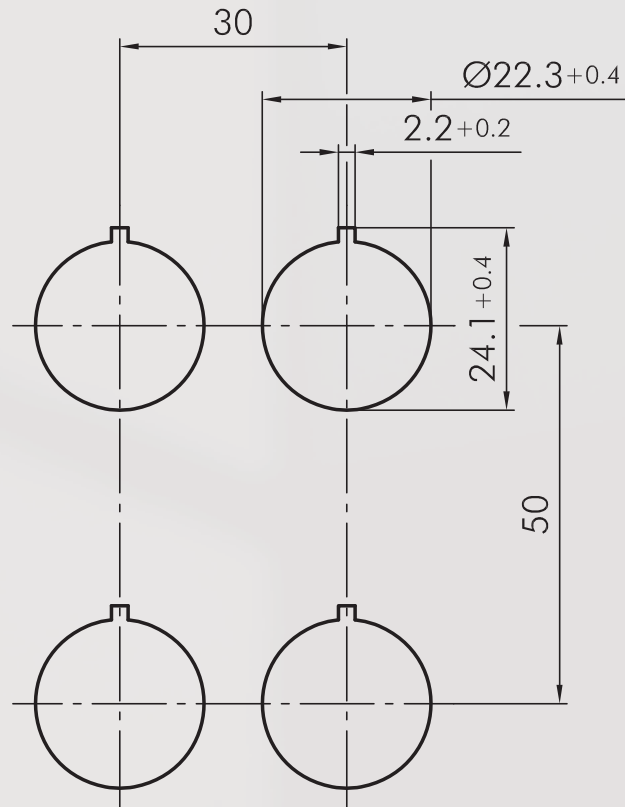
DFA
DFA...
Battery-free wireless
transmitter modules
page 566

When combining the DT... contact blocks with key, selector and toggle heads,
please add ..._497 to the actuator type reference!

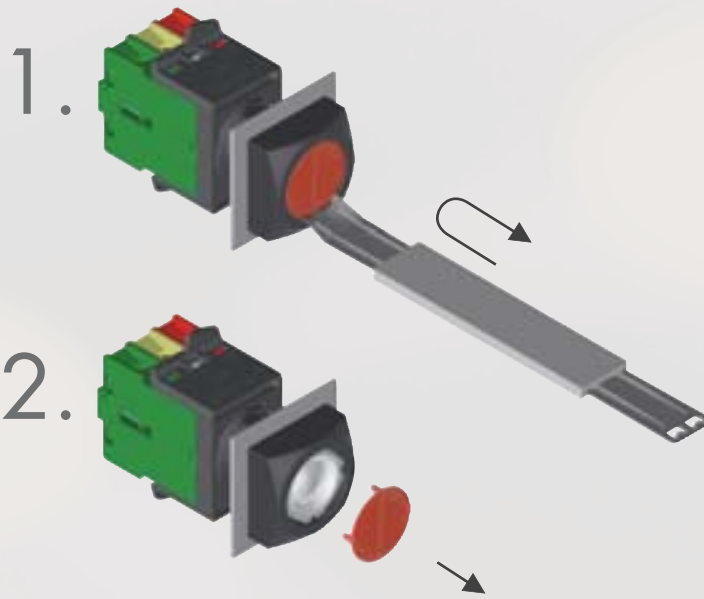
Mounting depth dimensions



Cutout dimensions



Mounting and service instructions



Pushbuttons

Illustration

Dimensions

Description

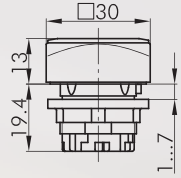
Type

IP65

6 mm

illumination

actuation



Pushbutton head

suitable contact blocks:

DS DT ET M

front bezel:

charcoal

QRT...

Accessories



Concave lens, transparent

colour:	blue		T26DBL
	yellow		T26DGB
	blue		T26DGN
	clear		T26DKL
	red		T26DRT
	opal white		T26DWS



Concave lens, non-transparent

used for pushbuttons without inscription and illumination

colour:	blue		T26DGBL
	yellow		T26DGGB
	green		T26DGGN
	black		T26DGSW
	red		T26DGRT
	white		T26DGWS



High lens, transparent

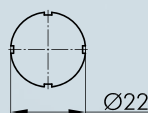
colour:	blue		KH23BL
	yellow		KH23GB
	green		KH23GN
	clear		KH23KL
	red		KH23RT
	opal white		KH23WS



High lens, non-transparent

used for pushbuttons without inscription and illumination

colour:	blue		TG22GHBL
	yellow		TG22GHGB
	green		TG22GHGN
	black		TG22GHSW
	red		TG22GHRT
	white		TG22GHWS



Nameplate with standard imprint

please specify index number (see nameplates from page 634)

BSK...

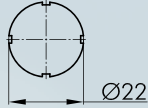
Accessories for Pushbuttons and Switches

Illustration

Dimensions

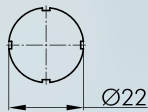
Description

Type



Nameplate with special imprint
according to customer's specification

BSKB

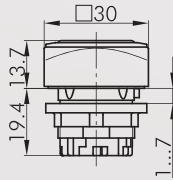


Blank nameplate

BSKU

IP67

6 mm



Membrane pushbutton head

with tightly closed, transparent silicone cap, down to -50° C

suitable contact blocks:



front bezel: charcoal



QRTM...

Accessories



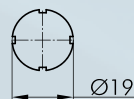
Flat lens, transparent

colour:

blue
yellow
green
clear
red
opal white



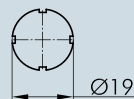
T20FBL
T20FGB
T20FGN
T20FKL
T20FRT
T20FWS



Nameplate with standard imprint

please specify index number(see nameplates from page 634)

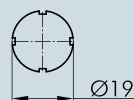
BSRX...



Nameplate with special imprint

according to customer's specification

BSRXB



Blank nameplate

BSRXU

Pushbuttons

Illustration

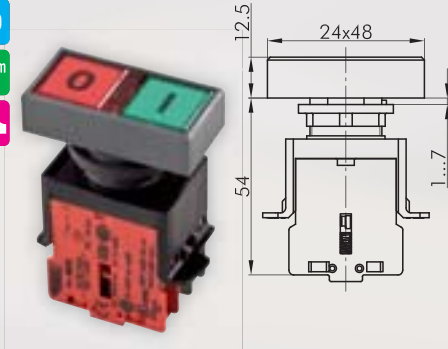
Dimensions

Description

Type

IP40

6 mm



Double pushbutton

fully assembled with modular contact blocks
ON-pushbutton green, 1NO
OFF-pushbutton red, 1NC

Connection type: screw connection

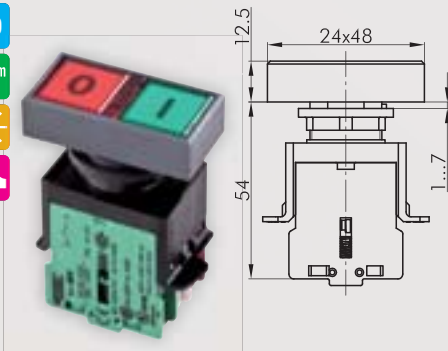
front bezel: charcoal



LDT

IP40

6 mm



Illuminated double pushbutton

with central signal light
without lamp
fully assembled with modular contact blocks
ON-pushbutton green, 1NO
OFF-pushbutton red, 1NC

Connection type: screw connection

front bezel: charcoal



LDTL

Accessories

IP67



Sealing cap

made of silicone rubber, down to -50°C

TK50S

Mushroom Pushbuttons

Illustration

Dimensions

Description

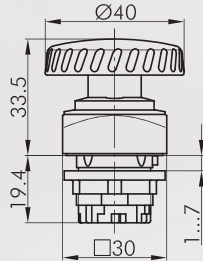
Type



For further emergency-stops, please refer to the chapter "Emergency-Stop Head" starting on page 594

The emergency-stop heads can also be supplied as latching mushroom heads with mushrooms in different colours.

IP65
6 mm



Mushroom head, latch-type

other mushroom colours on request
must be mounted onto yellow background

- Foolproof: no
- Switching position indicator: no
- Permissive Contact: no
- Anti-lock collar: no
- Release: twist
- Standard: EN 60947-5-1, EN 60947-5-5, EN ISO 13850



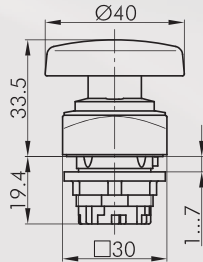
suitable contact blocks:

ASI DS DT ET M

- front bezel: charcoal
- Mushroom head: red

QRV

IP65
6 mm



Mushroom head, momentary

other mushroom colours on request

- Switching position indicator: no
- Permissive Contact: no
- Anti-lock collar: no

suitable contact blocks:

DS DT ET M

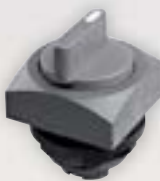
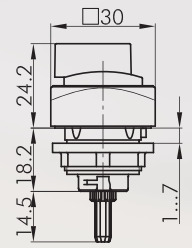
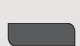
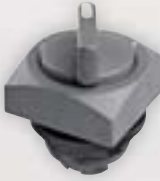
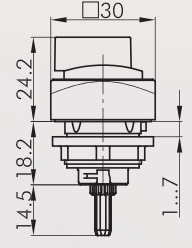
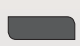

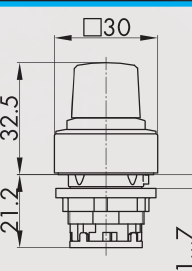
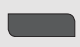

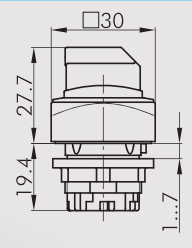
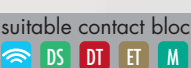




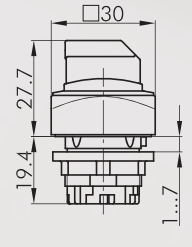
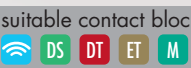



- front bezel: charcoal
- Mushroom head: red
- front bezel: charcoal
- Mushroom head: black

QRS

QRS_SW.PILZ

Knob Sets for Rotary Switches

I = Switching position
> = Spring return

Illustration	Dimensions	Description	Type
		Knob set for rotary switches, without inscription for Kraus & Naimer CG4 and CA4 further versions on request front bezel: charcoal	 QRDAU
		Knob set for rotary switches, with inscription for Kraus & Naimer types CG4 and CA4 other versions on request front bezel: charcoal	 QRDAB...
		Knob set for potentiometers for potentiometers of 6 mm shaft dia. and thread M10 x 0.75 delivery without potentiometer shaft length: approx. 50 mm ± 2 mm, incl. fastening thread front bezel: charcoal	 QRR...
		Selector head, maintained suitable contact blocks:  front bezel: charcoal	 QRWA...
		suitable contact blocks:  front bezel: charcoal	 QRWB...
		Selector head, momentary suitable contact blocks:  front bezel: charcoal	 QRSTA...
		suitable contact blocks:  front bezel: charcoal	 QRSTB...

Selector Switches (momentary/maintained)

I = Switching position
> = Spring return

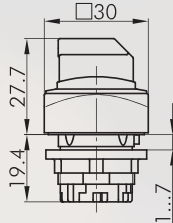
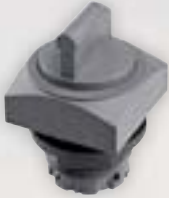
Illustration

Dimensions

Description

Type

IP65



Selector head, left maintained, right momentary

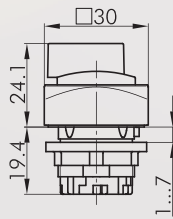
suitable contact blocks:

DT ET M

front bezel: charcoal



QRWC...



Illuminated selector head, maintained

inclusive four small, transparent colour plates in red, yellow, green, white and blue

suitable contact blocks:

DS DT ET M

front bezel: charcoal



QRWAL

suitable contact blocks:

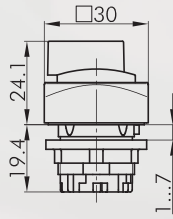
DS DT ET M

front bezel: charcoal



QRWBL

IP65



Illuminated selector head, left maintained, right momentary

inclusive four small, transparent colour plates in red, yellow, green and blue

suitable contact blocks:

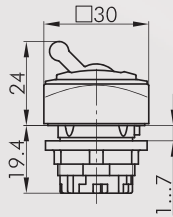
DS DT ET M

front bezel: charcoal



QRWCL

IP65



Toggle head

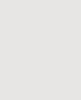
red toggle (other colours on request)

suitable contact blocks:

DS DT ET M

front bezel: charcoal

Knob colour: red



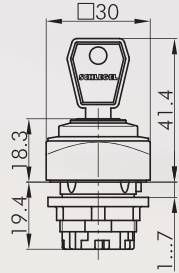
QRK...

Key Switches (momentary/maintained)

I = Switching position
> = Spring return
O = Key removable position

Illustration	Dimensions	Description	Type
--------------	------------	-------------	------

IP65



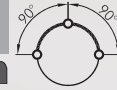
Key actuator, maintained

including two keys
other lock types on request

suitable contact blocks:

DT **ET** **M**

front bezel: charcoal



QRSSA12E...

suitable contact blocks:

DT **ET** **M**

front bezel: charcoal



QRSSA13E...

suitable contact blocks:

DS **DT** **ET** **M**

front bezel: charcoal



QRSSA14E...

suitable contact blocks:

DS **DT** **ET** **M**

front bezel: charcoal



QRSSA15E...

suitable contact blocks:

DS **DT** **ET** **M**

front bezel: charcoal



QRSSA17E...

suitable contact blocks:

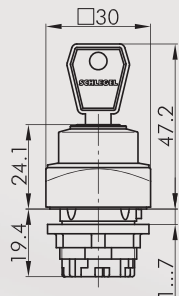
DS **DT** **ET** **M**

front bezel: charcoal



QRSSA18E...

IP65



Key actuator, momentary

including two keys
other lock types on request

suitable contact blocks:

DT **ET** **M**

front bezel: charcoal



QRSSA23E...

suitable contact blocks:

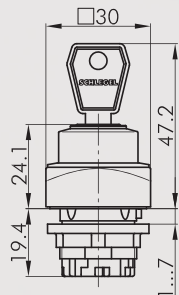
DS **DT** **ET** **M**

front bezel: charcoal



QRSSA27E...

IP65



Key actuator, left maintained, right momentary

including two keys
other lock types on request

suitable contact blocks:

DT **ET** **M**

front bezel: charcoal



QRSSA24E...

Pilot Lights

Illustration Dimensions Description Type

Accessories

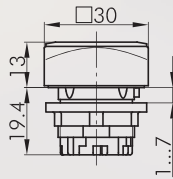


Spare key (standard)

standard spare key, specify key number for special locks

ESE845

IP65



Pilot light head

suitable lampholders:

DS DT ET M

front bezel: charcoal



QRN...

Accessories



Convex lens

colour:	blue		KF23BL
	yellow		KF23GB
	green		KF23GN
	clear		KF23KL
	red		KF23RT
	opal white		KF23WS



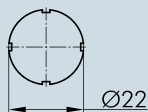
High lens, transparent

colour:	blue		KH23BL
	yellow		KH23GB
	green		KH23GN
	clear		KH23KL
	red		KH23RT
	opal white		KH23WS



Concave lens, transparent

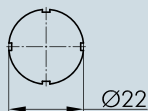
colour:	blue		T26DBL
	yellow		T26DGB
	blue		T26DGN
	clear		T26DKL
	red		T26DRT
	opal white		T26DWS



Nameplate with standard imprint

please specify index number (see nameplates from page 634)

BSK...


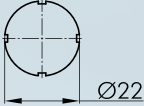


Nameplate with special imprint


according to customer's specification


BSKB


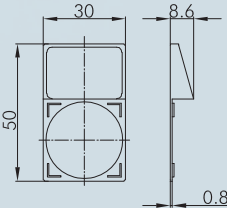
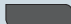
Accessories for Pushbuttons and Switches


Illustration	Dimensions	Description	Type
		Blank nameplate	BSKU


Accessories


	Mounting tool 22 with torque limitation for the series QUARTEX-R(-JUWEL), KOMBITAST-R-JUWEL, RONDEX, RONDEX-M, RONDEX-JUWEL, RVA, DUX-Basic, SHORTRON, jacks of the ranges RONTRON-R/-Q-JUWEL	S22
---	--	------------

	Mounting tool adapter with 1/4" connections for mounting tools S16 and S22	SRA
---	--	------------

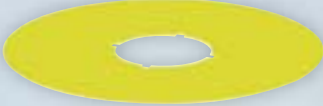

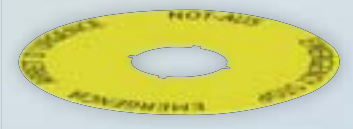



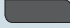
		External nameplate holder for outside marking of the actuators of the QUARTEX-R series, accepts self-adhesive nameplates colour: charcoal 	QRABT
---	---	---	--------------

	Self-adhesive nameplate, laser-printed inscription according to customer's specification dimensions: 19 x 27 mm	BZ23L...
---	--	-----------------

	Self-adhesive nameplate blank dimensions: 19 x 27 mm	BZ23U
---	--	--------------

	Self-adhesive nameplate with standard imprint please specify index number(see nameplates from page 634) dimensions: 19 x 27 mm	BZ23B...
---	---	-----------------

Accessories for Pushbuttons and Switches

Illustration	Dimensions	Description	Type
		Yellow nameplate self-adhesive PVC foil printing on request outer dia. 75 mm for mounting dia. 22.3 mm colour: yellow	 NAS_22
		Yellow nameplate with quadrilingual imprint self-adhesive PVC foil outer dia. 75 mm for mounting dia. 22.3 mm colour: yellow	 NAS_22_548
		Universal lens remover	USK
		Dummy to close unused mounting apertures colour: charcoal	 BVQR

IP65

About Us

→ Pushbuttons and Switches

Panel Mount Jacks

Emergency-Stop Buttons

Bus Technology

RFID

Enclosures

Pedal Switches

Terminal Blocks

Type Index