



General Data

Approvals:	CCC, cCSAus, CE, cURus, DNVGL
Protection class:	II (protective insulation)
Operation travel:	3 mm
Connection type:	PCB-mount terminals
Contact material:	gold-plated 1.5µm
Max. storage temperature:	-50°C ... 85°C
Max. operating temperature:	-30°C ... 70°C, without illumination -30°C ... 55°C, using incandescent lamps -30°C ... 65°C, using LEDs
Mechanical life:	1 million switching cycles
Electrical life (rated load):	1 million operations at rated load
Contact resistance NO:	< 50 mOhm (new state)
Contact resistance NC:	< 100 mOhm (new state)
Bouncing time NO:	< 10ms
Bouncing time NC:	< 10ms

Technical Data - Lamp

Lamp socket:	T5,5K
Max. lamp voltage:	60V
Max. lamp output:	1.2W
Definition:	X1...anode, X2...cathode

Electrical features

Rated voltage:	20mV ... 48V AC/DC
Rated current:	0.01mA ... 100mA

Electrical data acc. to IEC/EN 60947-5-1 (VDE 0660 Sect. 200)

	alternate current	direct current
Utilisation category:	AC12	DC12
Rated insulation voltage Ui:	60V	60V
Rated operating voltage Ue:	48V	48V
Rated operating current Ie:	0.1A	0.1A
Continuous thermal current:	100mA	100mA

Remark

GB14048.5-2008 (IEC60947-5-1)

Electrical data acc. to C22.2 No. 14-10

Rated voltage:	20mV ... 48V AC/DC
Rated current:	0.01mA ... 100mA

About Us

Bushbuttrons/Switches
→ Contact Blocks

Panel Mount Jacks

Emergency-Stop Buttons

Bus Technology

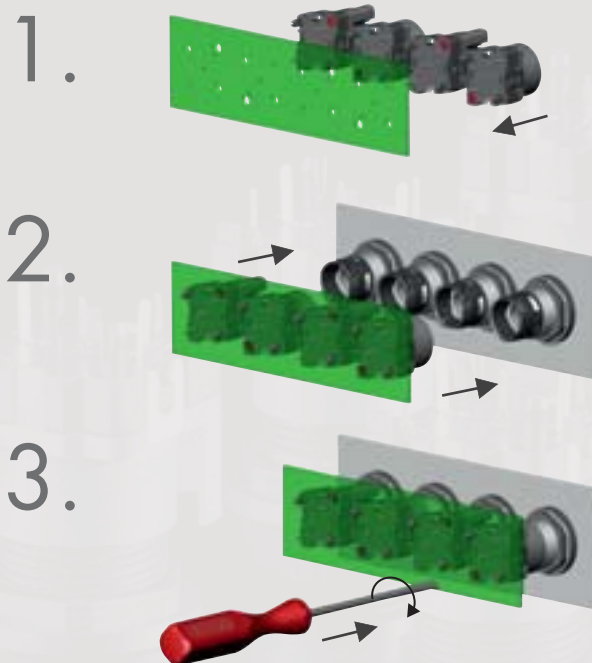
RFID

Enclosures

Pedal Switches

Terminal Blocks

Type Index

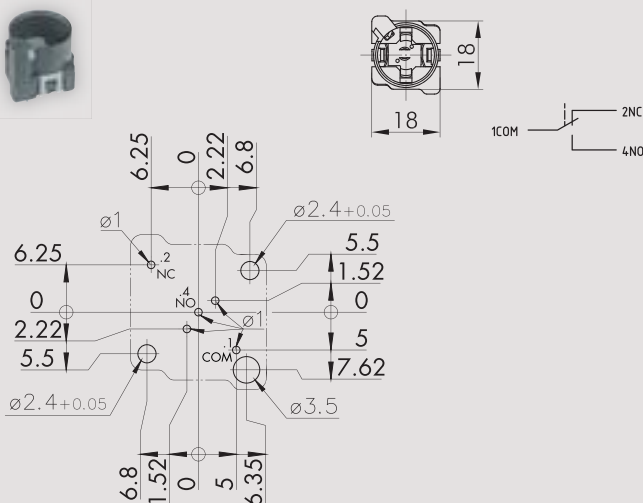


Illustration

Description

Type

IP00



Contact block, momentary

1 inverter
PCB-mount terminals
2 holes allow direct soldering of an LED into the PCB

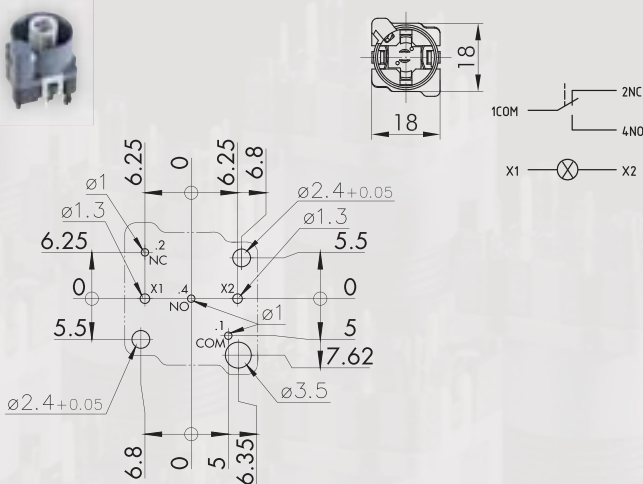


suitable pushbuttons and switches:



Contact material: gold-plated 1.5µm **CTP_485**

IP00



Illuminated contact block, momentary

1 inverter
PCB-mount terminals
Lamp socket T5,5K

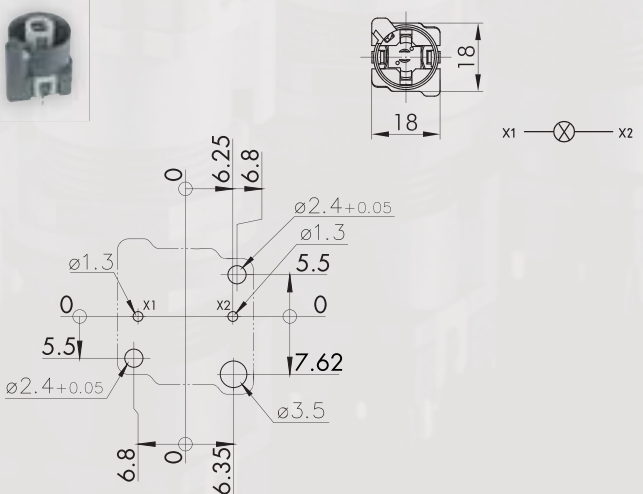


suitable pushbuttons and switches:



Contact material: gold-plated 1.5µm **CTLP_485**

IP00



Lampholder

PCB-mount terminals
Lamp socket T5,5K

suitable pilot light heads:



CLP_485

About Us

Buttons/Switches

Panel Mount Jacks

Emergency/Stop Buttons

Bus Technology

RFID

Enclosures

Pedal Switches

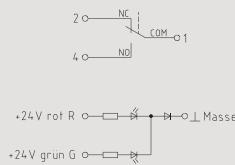
Terminal Blocks

Type Index

Illustration

Description

Type



Contact block, momentary, with 2-coloured LED red/green 1 inverter

spring-clamp connection

single-wire
0.5 mm²... 2.5 mm²

ferrule with collar
0.25 mm²... 1 mm²

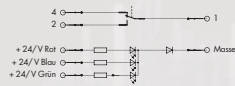
ferrule without collar
0.25 mm²... 1 mm²
Lamp socket none, with integrated LED



suitable pushbuttons and switches



Contact material gold-plated 1.5µm **CTFS_24R_G**



Contact block, momentary, incl. RGB LED 1 inverter

spring-clamp connection

single-wire
0.5 mm²... 2.5 mm²

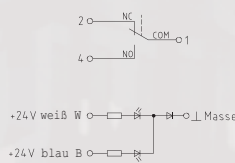
ferrule with collar
0.25 mm²... 1 mm²

ferrule without collar
0.25 mm²... 1 mm²
Lamp socket none, with integrated LED

suitable pushbuttons and switches



Contact material gold-plated 1.5µm **CTFS_24RGB**



Contact block, momentary, with 2-coloured LED white/blue 1 inverter

spring-clamp connection

single-wire
0.5 mm²... 2.5 mm²

ferrule with collar
0.25 mm²... 1 mm²

ferrule without collar
0.25 mm²... 1 mm²
Lamp socket none, with integrated LED

suitable pushbuttons and switches



Contact material gold-plated 1.5µm **CTFS_24W_B**

About Us

Bushings/Switches

Panel Mount Jacks

Emergency-Stop Buttons

Bus Technology

RFID

Enclosures

Pedal Switches

Terminal Blocks

Type Index

Illustration	Description	Type
Accessories		
	<p>Ultra-bright LED, T5,5K socket, 12V with integrated series resistor and half-wave rectifier, for 12 V AC/DC (7/14 mA) when connecting to DC, the correct polarity must be observed: + ... X1/- ... X2 storage temperature: -25°C ... +80°C ambient temperature: -20°C ... +60°C voltage tolerance: + 10 %</p>	
	Colour white	L5,5K12UW
	<p>Ultra-bright LED, T5,5K socket, 24V with integrated series resistor and half-wave rectifier, for 24 V AC/DC (7/14 mA) when connecting to DC, the correct polarity must be observed: + ... X1/- ... X2 storage temperature: -25°C ... +80°C ambient temperature: -20°C ... +60°C voltage tolerance: + 10 %</p>	
	Colour white	L5,5K24UW
	<p>Two-colour LED, T5,5K socket - 24V with built-in series resistor colour depending on the polarity storage temperature: -25°C ... +80°C+80°C ambient temperature: -20°C ... +60°C+60°C voltage tolerance + 10 %+ 10 % colour: red green rated current [mA]: 14 13 brightness [mcd]: 2300 650 dominant wave length [nm]: 625 525</p>	
	Colour red/green	L5,5K24RG
 	<p>LED adapter for LEDs of 3 and 5 mm Ø to be used in T5.5K sockets an external resistor must be provided</p> <p>suitable contact blocks:</p> 	
		LA5,5
	<p>Ultra-bright LED ready-made for CTP_485 Connection type solder pins, grid 2.54 mm</p>	
	Colour white	LED3UW

About Us

Bushbuttons/Switches

Panel Mount Jacks

Emergency-Stop Buttons

Bus Technology

RFID

Enclosures

Pedal Switches

Terminal Blocks

Type Index

→ Contact Blocks