



**General Data**

Type reference:	CZ...
Approvals:	CCC, cCSAus, cURus, DNVGL
Protection class:	II (protective insulation)
Operation travel:	3 mm
Connection type:	PCB-mount terminals
Contact material:	gold-plated 1.5µm
Max. storage temperature:	-50°C ... 85°C
Max. operating temperature:	-30°C ... 70°C, without illumination -30°C ... 55°C, using incandescent lamps -30°C ... 65°C, using LEDs
Mechanical life:	1 million switching cycles
Electrical life (rated load):	1 million operations at rated load
Contact resistance NO:	< 50 mOhm (new state)
Contact resistance NC:	< 100 mOhm (new state)
Bouncing time NO:	< 10ms
Bouncing time NC:	< 10ms

**Technical Data - Lamp**

Lamp socket:	T5,5K
Max. lamp voltage:	60V
Max. lamp output:	1.2W
Definition:	X1...anode, X2...cathode

**Electrical features**

Rated voltage:	20mV ... 48V AC/DC
Rated current:	0.01mA ... 100mA

**Electrical data acc. to IEC/EN 60947-5-1 (VDE 0660 Sect. 200)**

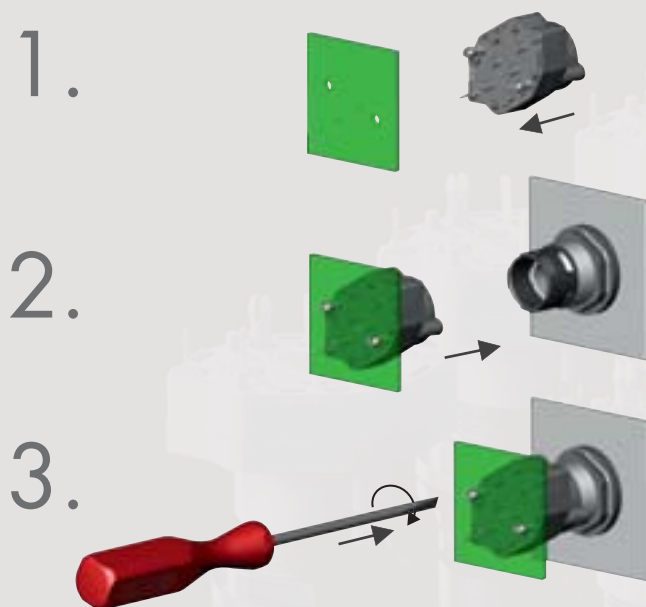
	alternate current	direct current
Utilisation category:	AC12	DC12
Rated insulation voltage Ui:	60V	60V
Rated operating voltage Ue:	48V	48V
Rated operating current Ie:	0.1A	0.1A
Continuous thermal current:	100mA	100mA

**Remark**

GB14048.5-2008 (IEC60947-5-1)

**Electrical data acc. to C22.2 No. 14-10**

Rated voltage:	20mV ... 48V AC/DC
Rated current:	0.01mA ... 100mA

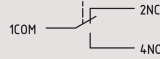
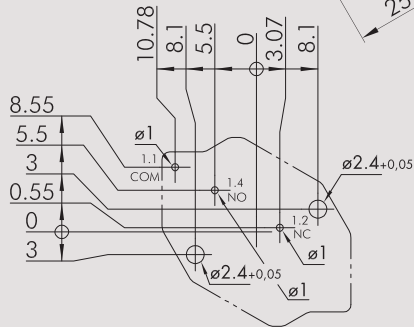
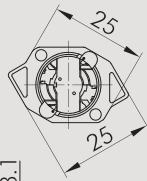


Illustration

Description

Type

IP00  
3mm



**Contact block, momentary**

**1 inverter**

PCB-mount terminals  
only combinable with the contact blocks  
FRTP... and C...\_485

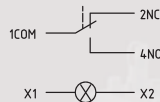
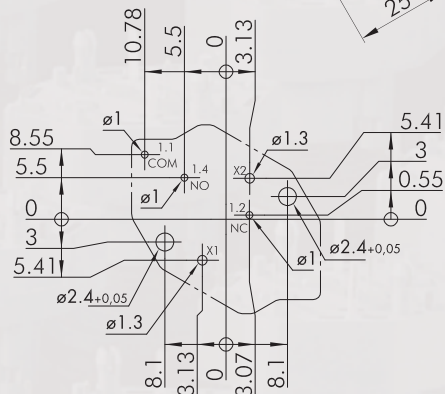
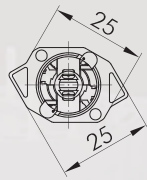


suitable pushbuttons and switches:



Contact material: gold-plated 1.5µm **CZTP**

IP00  
3mm



**Illuminated contact block, momentary**

**1 inverter**

PCB-mount terminals  
only combinable with the contact blocks  
FRTP... and C...\_485  
Lamp socket T5,5K

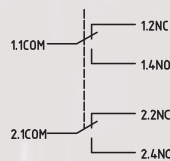
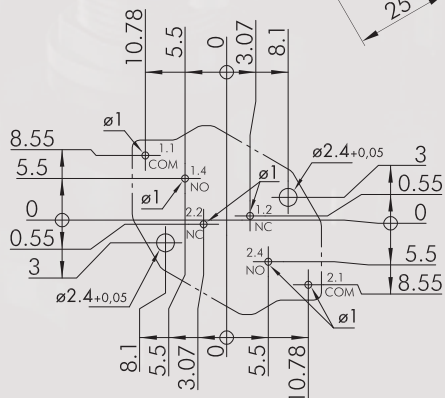
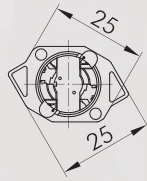


suitable pushbuttons and switches:



Contact material: gold-plated 1.5µm **CZTLP**

IP00  
3mm



**Contact block, momentary**

**2 inverters**

PCB-mount terminals  
two galvanically isolated inverters,  
only combinable with the contact blocks  
FRTP... and C...\_485



suitable pushbuttons and switches:



Contact material: gold-plated 1.5µm **CZTP2**

# Contact blocks CZ...

PCB-mount terminals

MADE IN GERMANY



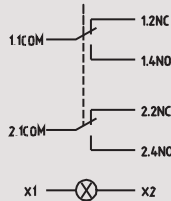
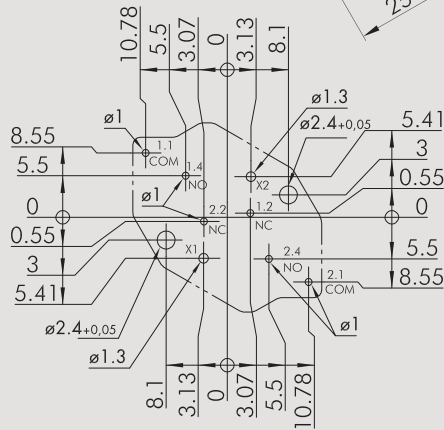
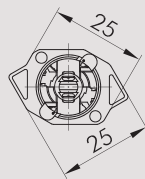
Illustration

Description

Type

IP00

3 mm



## Illuminated contact block, momentary 2 inverters

PCB-mount terminals  
two galvanically isolated inverters,  
only combinable with the contact blocks  
FRTP... and C...\_485  
Lamp socket T5,5K



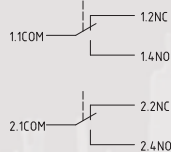
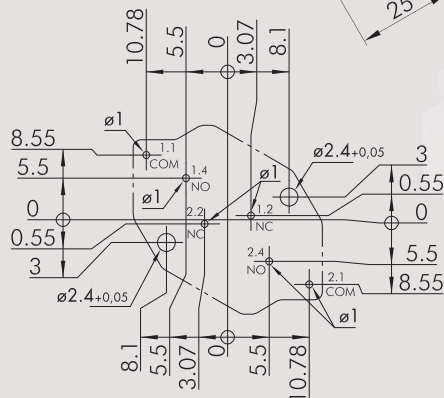
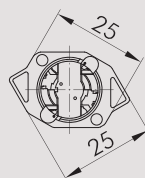
suitable pushbuttons and switches:



Contact material: gold-plated 1.5µm **CZTLP2**

IP00

3 mm



## Contact block with two-piece plunger, momentary 2 inverters

PCB-mount terminals  
two galvanically isolated inverters,  
only combinable with the contact blocks  
FRTP... and C...\_485



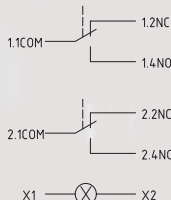
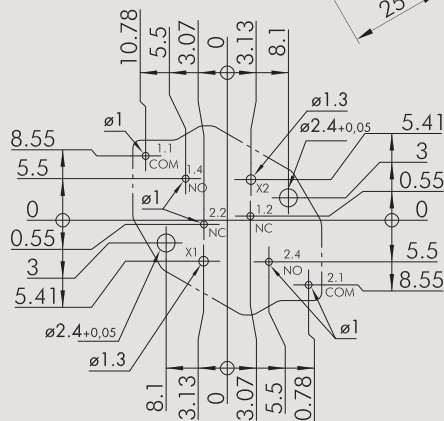
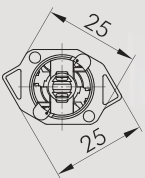
suitable pushbuttons and switches:



Contact material: gold-plated 1.5µm **CZTP2\_549**

IP00

3 mm



## Illuminated contact block with two-piece plunger 2 inverters

PCB-mount terminals  
two galvanically isolated inverters,  
only combinable with the contact blocks  
FRTP... and C...\_485  
Lamp socket T5,5K



suitable pushbuttons and switches:



Contact material: gold-plated 1.5µm **CZTLP2\_549**

About Us

Busbuttons/Switches

Panel Mount Jacks

Emergency-Stop Buttons

Bus Technology

RFD

Enclosures

Pedal Switches

Terminal Blocks

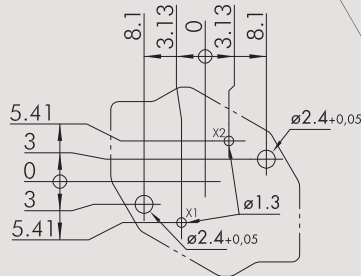
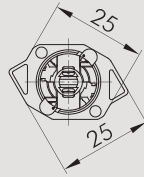
Type Index

Illustration

Description

Type

IP00



### Lampholder

PCB-mount terminals  
only combinable with the contact blocks  
FRTP... and C... 485  
Lamp socket T5,5K



suitable pilot light heads:



CZLP

### Accessories



#### Ultra-bright LED, T5,5K socket, 12V

with integrated series resistor and half-wave rectifier, for 12 V AC/DC (7/14 mA)  
when connecting to DC, the correct polarity must be observed:  
+ ... X1/- ... X2  
storage temperature:  
-25°C ... +80°C  
ambient temperature:  
-20°C ... +60°C  
voltage tolerance:  
+ 10 %

Colour: white L5,5K12UW



#### Ultra-bright LED, T5,5K socket, 24V

with integrated series resistor and half-wave rectifier, for 24 V AC/DC (7/14 mA)  
when connecting to DC, the correct polarity must be observed:  
+ ... X1/- ... X2  
storage temperature:  
-25°C ... +80°C  
ambient temperature:  
-20°C ... +60°C  
voltage tolerance:  
+ 10 %

Colour: white L5,5K24UW



#### Two-colour LED, T5,5K socket - 24V

with built-in series resistor  
colour depending on the polarity  
storage temperature:  
-25°C ... +80°C+80°C  
ambient temperature:  
-20°C ... +60°C+60°C  
voltage tolerance  
+ 10 %+ 10 %  
colour: red green  
rated current [mA]: 14 13  
brightness [mcd]: 2300 650  
dominant wave length [nm]: 625 525

Colour: red/green L5,5K24RG

About Us

Bushbuttons/Switches

Panel Mount Jacks

Emergency/Stop Buttons

Bus Technology

RFID

Enclosures

Pedal Switches

Terminal Blocks

Type Index

# Contact blocks CZ...

PCB-mount terminals

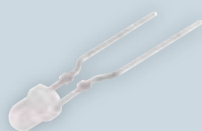
MADE IN GERMANY



Illustration

Description

Type



### Ultra-bright LED

ready-made for CTP\_485

Connection type solder pins, grid 2.54 mm

Colour: white

LED3UW



### LED adapter

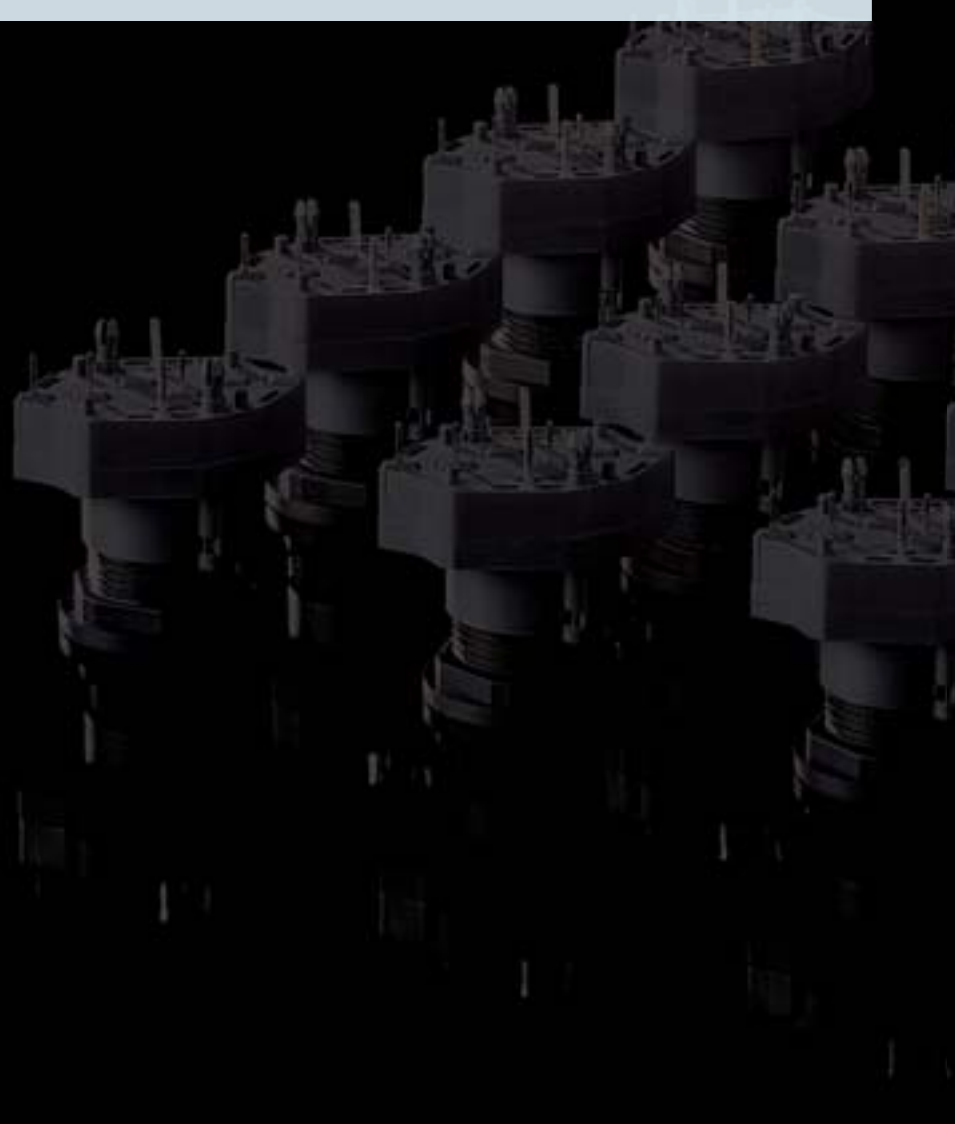
for LEDs of 3 and 5 mm Ø to be used in T5.5K sockets

an external resistor must be provided

suitable contact blocks:



LA5,5



About Us

Bushbuttrons/Switches

→ Contact Blocks

Panel Mount Jacks

Emergency-Stop Buttons

Bus Technology

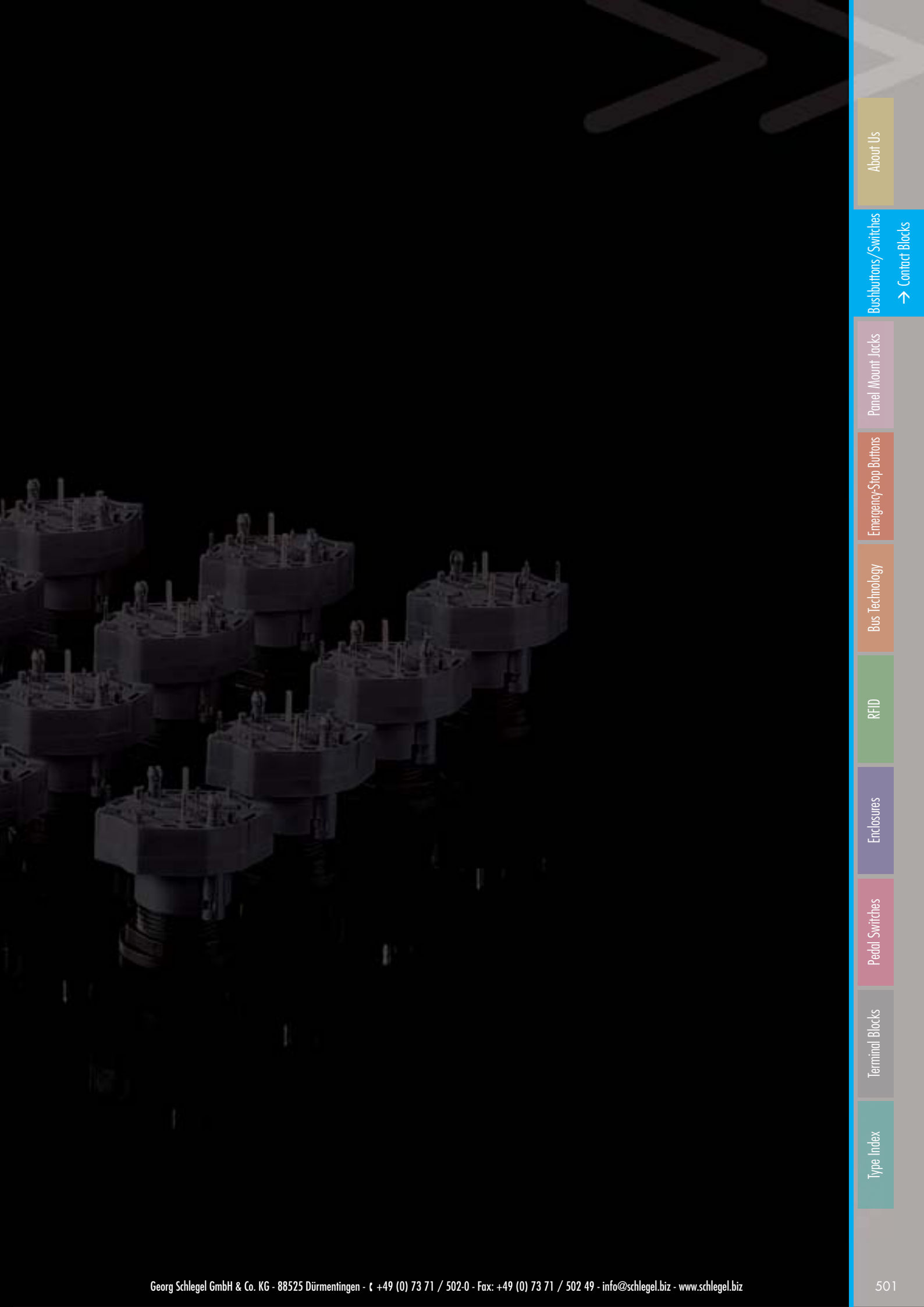
RFD

Enclosures

Pedal Switches

Terminal Blocks

Type Index



Type Index

Terminal Blocks

Pedal Switches

Enclosures

RFID

Bus Technology

Emergency-Stop Buttons

Panel Mount Jacks

Bushbuttons/Switches

→ Contact Blocks

About Us