



RONDEX-JUWEL®
Supplement to catalogue



Index

→ 01

Control Units
RONDEX-JUWEL® series

page 02

Type Index

Terminal Blocks

Pedal Switches

Enclosures

RFID

Bus Technology

Emergency-Stop Buttons

Panel Mount Jacks

Pushbuttons/Switches

About Us



Front dimensions: Ø 28 mm
Panel cut-out: Ø 22.3 mm
Front bezel height: 2 mm
Travel: 6 mm





RONDEX-JUWEL®

 Product configurator



Overview RONDEX-JUWEL® Series



- 01 Pushbutton Heads
- 02 Emergency-Stop Heads
- 03 Selector Heads
- 04 Key Actuators
- 05 Panel Mount Jacks
- 06 Pilot Light Heads

- page 08
- page 10
- page 11
- page 13
- page 16
- page 17

Contact Blocks/Lampholders

see page 408
in the product
catalogue

Housing colour



degree of protection



operating travel



tactile

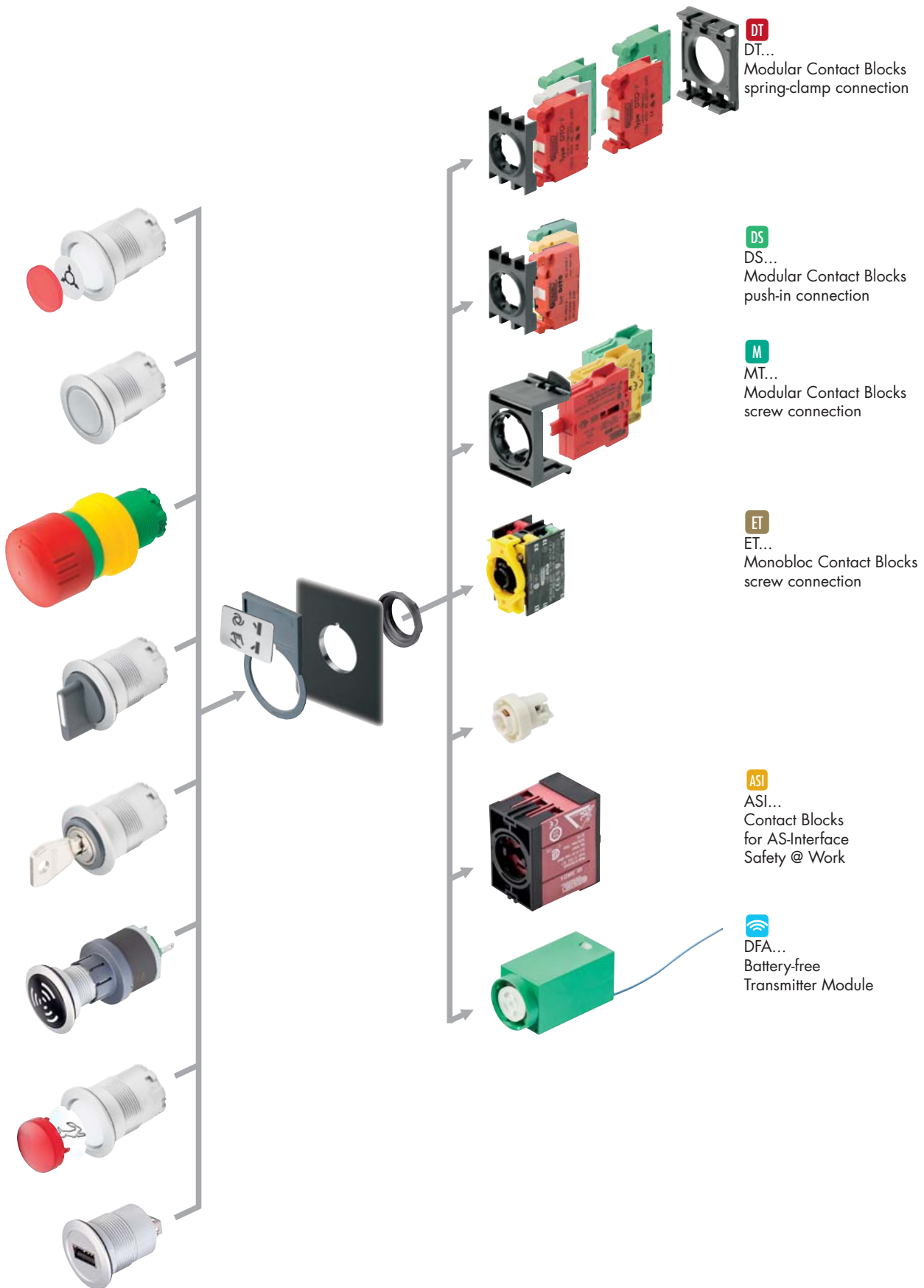


illuminating option



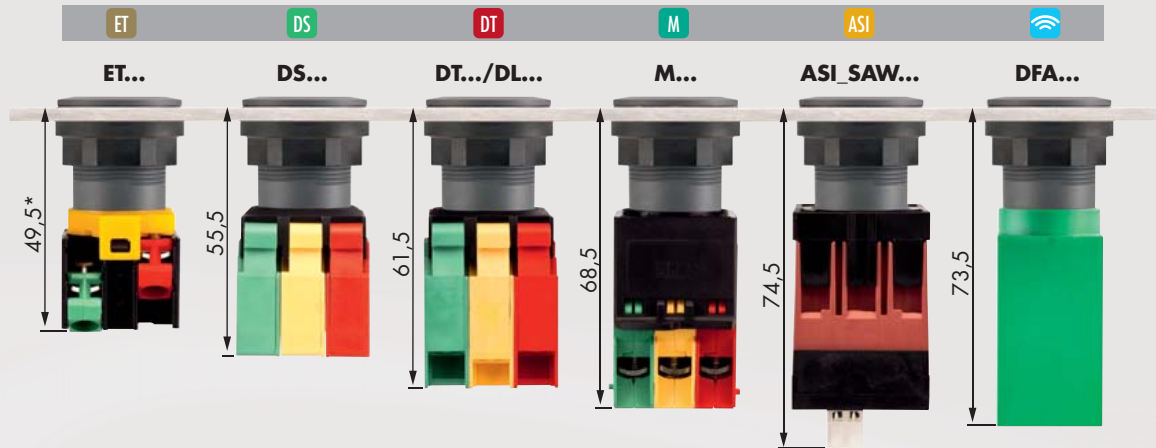
labelling option



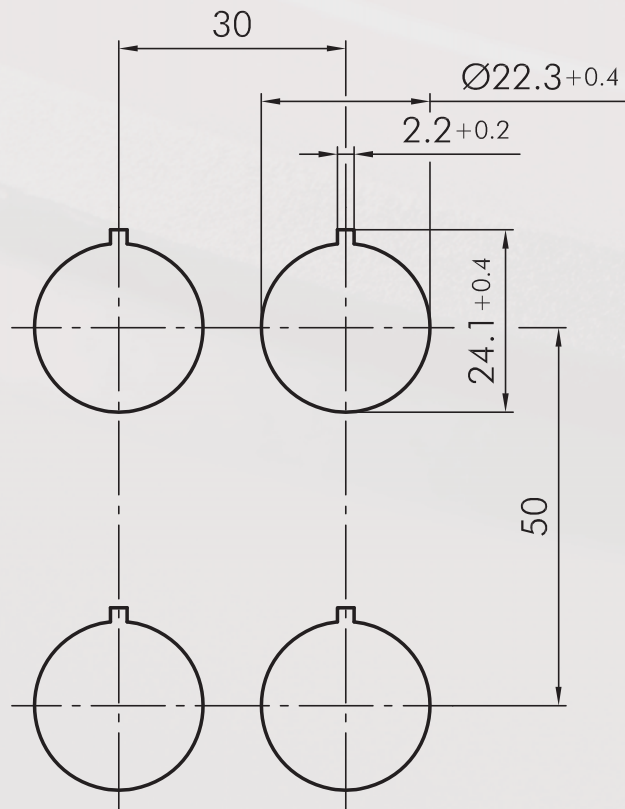


Ø 22.3 mm

Mounting Depth Dimensions



Cutout Dimensions



About Us

Pushbuttons
and Switches

Panel Mount Jacks

Emergency-Stop Buttons

Bus Technology

RFD

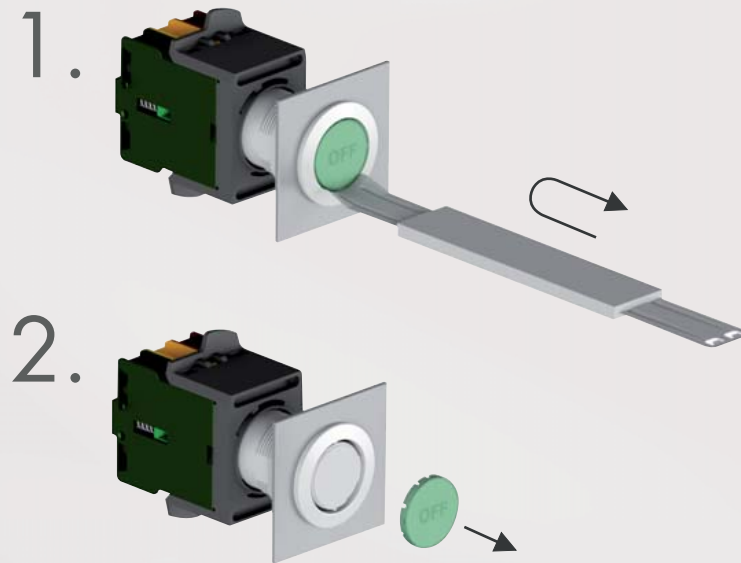
Enclosures

Pedal Switches

Terminal Blocks

Type Index

Mounting and Service Instructions



Two-piece plunger:

The actuator consists of 2 separate half shells. In the left switching position the left plunger part and thus the left contact element is operated, in the right switching position it is the right contact element. In the centre position none of the two contact elements is activated. Therefore, it should be noted that a cross-coupling of the contact elements is NOT allowed! In addition, the contact elements must be snapped on in the correct direction, otherwise any actuation will lead to the opposite function. In order to obtain the same switching situations as mentioned before, two NO contacts must be used:

1. left position = left plunger part operated = left NO contact closed, right NO contact open
2. center position = no plunger part operated = both NO contacts open
3. right position = right plunger part operated = left NO contact open, right NO contact closed

The two-piece plunger is used in the selector heads and key actuators of the following series:

Oktron, Oktron-R, Oktron-Juwel, Rontron-R-Juwel, Rontron-Q-Juwel and RX-Juwel (RXJZSA12E and RXJZWBL), DUX-Basic, Kombitast-R-Juwel (KRJZ...), Rondex-Juwel.

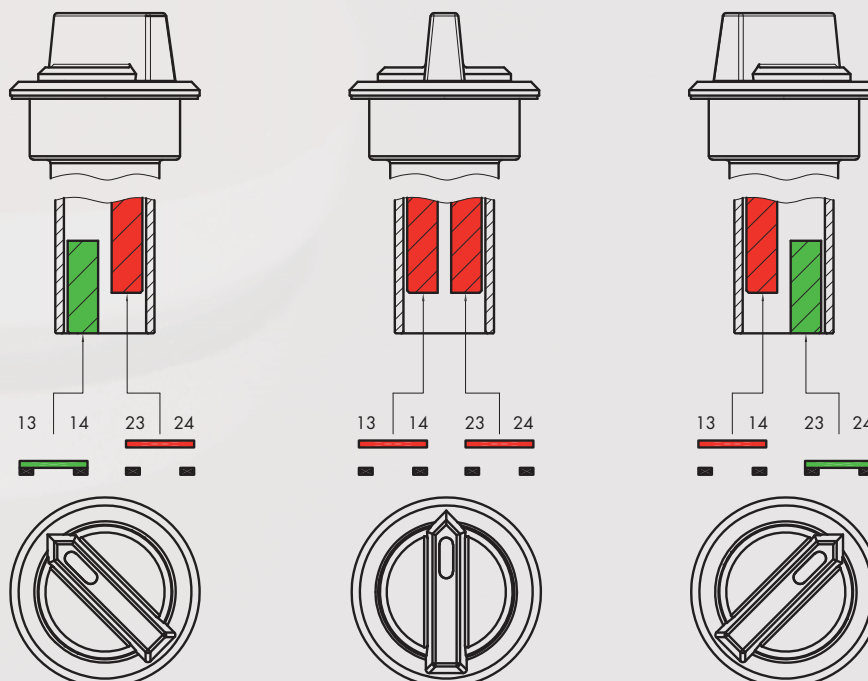


illustration of two-piece plunger

Pushbuttons

Illustration

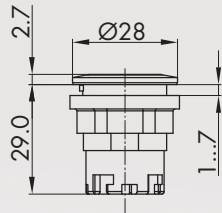
Dimensions

Description

Type

IP65
IP67

6 mm



Pushbutton head

suitable contact blocks

DS DT ET M

Front bezel

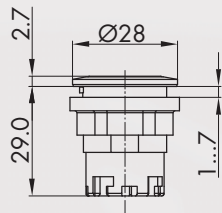
silver-coloured
charcoal
stainless steel, polished



JRMT
JRT
JRVAT

IP65
IP67

4 mm



Short-stroke pushbutton head

suitable contact blocks

DS

Front bezel

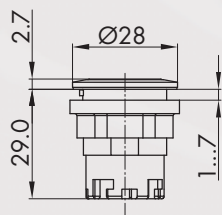
silver-coloured
charcoal
stainless steel, polished



JRMD
JRD
JRVAD

IP65
IP67

6 mm



Pushbutton head, maintained

suitable contact blocks

DS DT ET M

Front bezel

silver-coloured
charcoal
stainless steel, polished



JRMF
JRF
JRVAF

Accessories

Flat lens, transparent

Colour

blue
yellow
green
clear
red
opal white



T22RRBL
T22RRGB
T22RRGN
T22RRKL
T22RRRT
T22RRWS

Flat lens, non-transparent

Colour

blue
yellow
green
black
red
white
silver-coloured



T22RRGBL
T22RRGGB
T22RRGGN
T22RRGSW
T22RRGRT
T22RRGWS
T22RRGM

Pushbuttons

Illustration

Dimensions

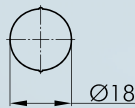
Description

Type



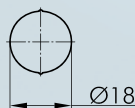
High lens, transparent

Colour	blue		T22HRRBL
	yellow		T22HRRGB
	green		T22HRRGN
	clear		T22HRRKL
	red		T22HRRRT
	opal white		T22HRRWS



Blank nameplate

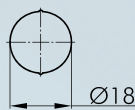
BSRRU



Nameplate with standard imprint

please specify index number (see nameplates from page 404 in the product catalogue)

BSRR...



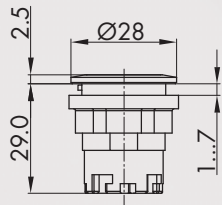
Nameplate with special imprint

according to customer's specification

BSRRB

IP65
IP67

6mm



Pushbutton head with ring illumination

incl. lens

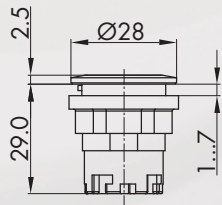
suitable contact blocks



Front bezel	silver-coloured		JRMTLR JRVATLR
	stainless steel, polished		

IP65
IP67

4mm



Short-stroke pushbutton head with ring illumination

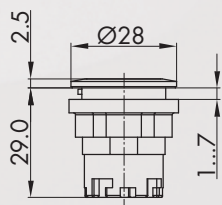
suitable contact blocks



Front bezel	silver-coloured		JRMDLR JRVADLR
	stainless steel, polished		

IP65
IP67

6mm



Pushbutton head with ring illumination and laser printing

incl. lens,

with laser printing translucent, standard imprints see nameplates from page 404 in the product catalogue (please specify index number), special inscription on request

suitable contact blocks



Front bezel	silver-coloured		JRMTLRL... JRVATLRL...
	stainless steel, polished		

Emergency-Stop Head

Illustration

Dimensions

Description

Type

Accessories

IP67

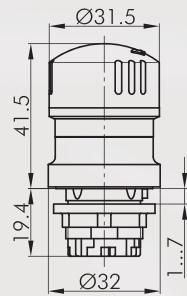


Sealing cap

made of silicone rubber, down to -50°C

TK28S

IP65
IP67
IP69K



Emergency-stop head

Foolproof	yes
Switching position indicator	yes
Permissive Contact	no
Anti-lock collar	no
Release	twist right or left
Standard	EN 60947-5-1, EN 60947-5-5, EN ISO 13850



suitable contact blocks



Front bezel	yellow	
Mushroom head	red	

QRUV



For further emergency-stops, please refer to the chapter "Emergency-Stop Head" starting on page 366 in the product catalogue

The emergency-stop heads can also be supplied as latching mushroom heads with mushrooms in different colours.

Selector Switches (momentary/maintained)

I = Switching position
> = Spring return

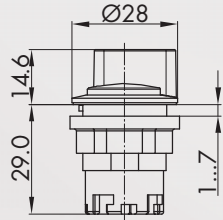
Illustration

Dimensions

Description

Type

IP65



Selector head, maintained

suitable contact blocks



Front bezel

silver-coloured



charcoal



stainless steel, polished



JRMWA

JRWA

JRVAWA

suitable contact blocks



Front bezel

silver-coloured



charcoal



stainless steel, polished

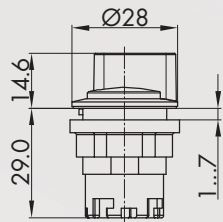


JRMWB

JRWB

JRVAWB

IP65



Selector head, momentary

suitable contact blocks



Front bezel

silver-coloured



charcoal



stainless steel, polished



JRMSTA

JRSTA

JRVASTA

suitable contact blocks



Front bezel

silver-coloured



charcoal



stainless steel, polished

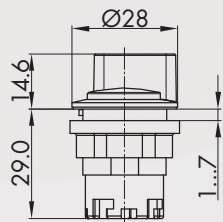


JRMSTB

JRSTB

JRVASTB

IP65



Selector head, left maintained, right momentary

suitable contact blocks



Front bezel

silver-coloured



charcoal



stainless steel, polished

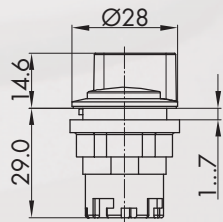


JRMWC

JRWC

JRVAWC

IP65



Illuminated selector head, maintained

inclusive five small transparent colour plates in red, yellow, white, green and blue

suitable contact blocks



Front bezel

silver-coloured



charcoal



stainless steel, polished



JRMWAL

JRWAL

JRVAWAL

suitable contact blocks



Front bezel

silver-coloured



charcoal



stainless steel, polished



JRMWBL

JRWBL

JRVAWBL

Selector Switches (momentary/maintained)

I = Switching position
> = Spring return

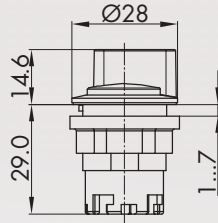
Illustration

Dimensions

Description

Type

IP65



Illuminated selector head, left maintained, right momentary

inclusive four small transparent colour plates in red, yellow, green and blue

suitable contact blocks



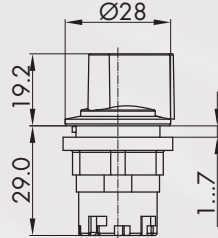
Front bezel

silver-coloured
charcoal
stainless steel, polished



JRMWCL
JRWCL
JRVWCL

IP65



Handy selector head, maintained

handy usability, also with gloves

suitable contact blocks



Front bezel

silver-coloured
charcoal
stainless steel, polished



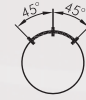
JRMGWA
JRGWA
JRVAGWA

suitable contact blocks



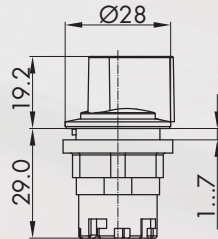
Front bezel

silver-coloured
charcoal
stainless steel, polished



JRMGWB
JRGWB
JRVAGWB

IP65



Handy selector head, momentary

handy usability, also with gloves

suitable contact blocks



Front bezel

silver-coloured
charcoal
stainless steel, polished



JRMGSTA
JRGSTA
JRVAGSTA

suitable contact blocks



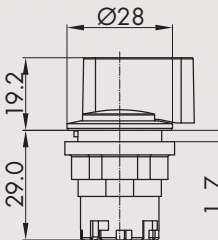
Front bezel

silver-coloured
charcoal
stainless steel, polished



JRMGSTB
JRGSTB
JRVAGSTB

IP65



Handy selector head, left maintained, right momentary

handy usability, also with gloves

suitable contact blocks



Front bezel

silver-coloured
charcoal
stainless steel, polished



JRMGWC
JRGWC
JRVAGWC

Key Switches (momentary/maintained)

I = Switching position
> = Spring return
O = Key removable position

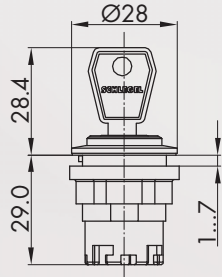
Illustration

Dimensions

Description

Type

IP65



Key actuator, maintained

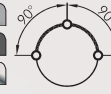
including two keys
other lock types on request

suitable contact blocks



Front bezel

- silver-coloured
- charcoal
- stainless steel, polished



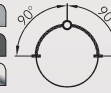
JRMSSA12E
JRSSA12E
JRVASSA12E

suitable contact blocks



Front bezel

- silver-coloured
- charcoal
- stainless steel, polished



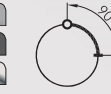
JRMSSA13E
JRSSA13E
JRVASSA13E

suitable contact blocks



Front bezel

- silver-coloured
- charcoal
- stainless steel, polished



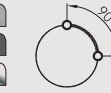
JRMSSA14E
JRSSA14E
JRVASSA14E

suitable contact blocks



Front bezel

- silver-coloured
- charcoal
- stainless steel, polished



JRMSSA15E
JRSSA15E
JRVASSA15E

suitable contact blocks



Front bezel

- silver-coloured
- charcoal
- stainless steel, polished



JRMSSA16E
JRSSA16E
JRVASSA16E

suitable contact blocks



Front bezel

- silver-coloured
- charcoal
- stainless steel, polished



JRMSSA17E
JRSSA17E
JRVASSA17E

suitable contact blocks



Front bezel

- silver-coloured
- charcoal
- stainless steel, polished



JRMSSA18E
JRSSA18E
JRVASSA18E

suitable contact blocks



Front bezel

- silver-coloured
- charcoal
- stainless steel, polished



JRMSSA19E
JRSSA19E
JRVASSA19E

Key Switches (momentary/maintained)

I = Switching position
> = Spring return
O = Key removable position

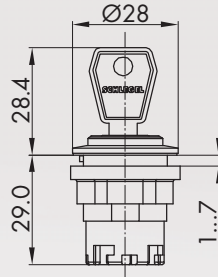
Illustration

Dimensions

Description

Type

IP65



Key actuator, momentary

including two keys
other lock types on request

suitable contact blocks



Front bezel

silver-coloured
charcoal
stainless steel, polished



JRMSSA23E
JRSSA23E
JRVASSA23E

suitable contact blocks



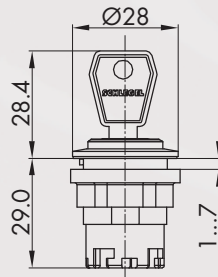
Front bezel

silver-coloured
charcoal
stainless steel, polished



JRMSSA28E
JRSSA28E
JRVASSA28E

IP65



Key actuator, left maintained, right momentary

including two keys
other lock types on request

suitable contact blocks



Front bezel

silver-coloured
charcoal
stainless steel, polished



JRMSSA24E
JRSSA24E
JRVASSA24E

suitable contact blocks



Front bezel

silver-coloured
charcoal
stainless steel, polished



JRMSSA25E
JRSSA25E
JRVASSA25E

Accessories



Spare key (standard)

ESE845

standard spare key, specify key number for special locks

Buzzers

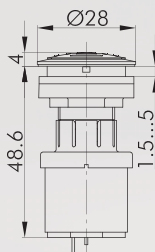
Illustration

Dimensions

Description



Type

IP65



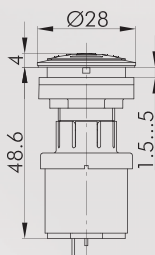
Buzzer

operating voltage: 12 ... 24V AC/DC
 operating current: 5mA (12V DC)
 16mA (24V DC)
 signal frequency: 3.8 +/- 0.5 kHz
 volume: max. 85 db (10 cm, 24V)
 max. 80 db (10 cm, 12V)
 operating temperature: -20°C ... 60°C
 Connection type: Faston terminals 2.8x0.8 mm

Front bezel: silver-coloured 
 stainless steel, polished 



RRJNSG+SG-24V
RRJVANSG+SG-24V

IP65



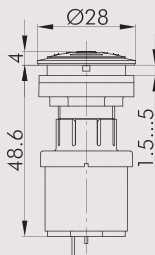
Interval buzzer

operating voltage: 12 ... 24V DC
 operating current: max. 30mA
 signal frequency: 3.5 +/- 0.5 kHz
 volume: max. 85 db (10 cm, 24V)
 max. 80 db (10 cm, 12V)
 intervall: 1s
 operating temperature: -20°C ... 60°C
 Connection type: Faston terminals 2.8x0.8 mm

Front bezel: silver-coloured 
 stainless steel, polished 



RRJNSG+SGLI-24V
RRJVANSG+SGLI-24V

IP65



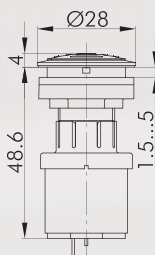
Illuminated buzzer

operating voltage: 12 ... 24V AC/DC
 operating current: abt. 30mA
 signal frequency: 3.5 +/- 0.5 kHz
 volume: max. 85 db (10 cm, 24V)
 max. 80 db (10 cm, 12V)
 operating temperature: -20°C ... +60°C
 Connection type: Faston terminals 2.8x0.8 mm

Front bezel: silver-coloured 
 stainless steel, polished 



RRJNSGL+SGLR-24V
RRJVANSGL+SGLR-24V

IP65



Illuminated interval buzzer

operating voltage: 12 ... 24V DC
 operating current: abt. 30mA
 signal frequency: 3.5 +/- 0.5 kHz
 volume: max. 85 db (10 cm, 24V)
 max. 80 db (10 cm, 12V)
 intervall: 1s
 operating temperature: -20°C ... +60°C
 Connection type: Faston terminals 2.8x0.8 mm

Front bezel: silver-coloured 
 stainless steel, polished 

RRJNSGL+SGLIR-24V
RRJVANSGL+SGLIR-24V

Industry 4.0 - Components

Illustration

Dimensions

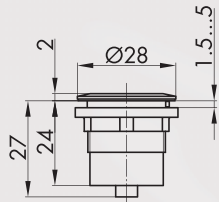
Description

Type



For panel mount jacks, please refer to page 552 ff in the product catalogue

IP65



WiFi antenna

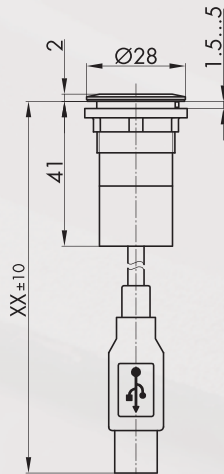
standard: IEEE 802.11 ac/a/b/g/n
connection: MCX jack

Colour silver-coloured



RRJ_WLA_01

IP65



WiFi adapter to USB

specification: IEEE 802.11 n conform and downward compatible to IEEE802.g/b supports 64/128-bit WEP, WPA and WPA2 encoding
system requirements: Windows XP, Vista, 7, 8, 8.1, 10, Mac OS X and Linux
connection: USB-2.0 cable (150cm)

Colour silver-coloured



RRJ_WLU_01



RFID components are available under www.schlegel.biz

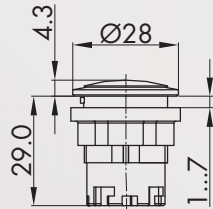
Pilot Lights

Illustration

Dimensions

Description

Type



Pilot light head

suitable contact blocks

DS DT ET M

Front bezel

silver-coloured

charcoal

stainless steel, polished



JRMN

JRN

JRVAN

Accessories



Lens

Colour

blue

yellow

green

clear

red

opal white



K22RRBL

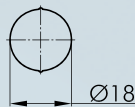
K22RRGB

K22RRGN

K22RRKL

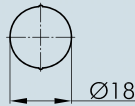
K22RRRT

K22RRWS



Blank nameplate

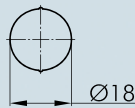
BSRRU



Nameplate with standard imprint

BSRR...

please specify index number (see nameplates from page 404 in the product catalogue)



Nameplate with special imprint

BSRRB

according to customer's specification



Mounting tool 22

S22

with torque limitation

for the series QUARTEX-R(-JUWEL), KOMBITAST-R-JUWEL, RONDEX, RONDEX-M, RONDEX-JUWEL, RVA, DUX-Basic, SHORTRON, jacks of the ranges RONTRON-R/-Q-JUWEL


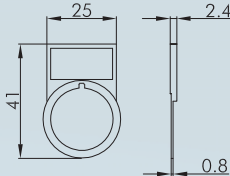
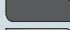
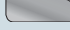







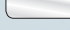


Mounting tool adapter with 1/4" connections



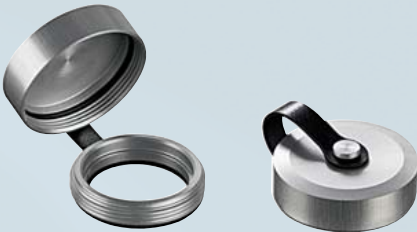


SRA

for mounting tools S16 and S22

Accessories for Pushbuttons and Switches

Illustration	Dimensions	Description	Type
 	<p>External nameplate holder for outside marking of the actuators of the RX-JUWEL, RONDEX-JUWEL series, accepts self-adhesive nameplates</p> <p>Colour charcoal silver-coloured</p>	 	<p>RXJABT RXJMABT</p>
		<p>Self-adhesive nameplate laser-printed inscription according to customer's specification dimensions: 22 x 11 mm</p>	BZ16L...
		<p>Self-adhesive nameplate blank dimensions: 22 x 11 mm</p>	BZ16U
		<p>Self-adhesive nameplate with standard imprint please specify index number(see nameplates from page 404 in the product catalogue) dimensions: 22 x 11 mm</p>	BZ16B...
		<p>Yellow nameplate self-adhesive PVC foil printing on request outer dia. 75 mm for mounting dia. 22 mm</p> <p>Colour yellow</p>	 <p>NAS_22</p>
		<p>Yellow nameplate with quadrilingual imprint self-adhesive PVC foil outer dia. 75 mm for mounting dia. 22 mm</p> <p>Colour yellow</p>	 <p>NAS_22_548</p>
<p>IP40</p> 		<p>Lead-sealable protective lid</p> <p>Colour transparent</p>	 <p>KDP22RR</p>

Accessories for Pushbuttons and Switches

Illustration	Dimensions	Description	Type
		<p>Lead-sealable, robust, tight protective lid</p> <p>Colour transparent black</p>	<p>KDPR22RR KDPR22RR_SW</p>
		<p>Protective lid made of TPE</p> <p>Colour black</p>	<p>AK22RRSW</p>
		<p>Robust tight protection cap</p> <p>- captive lid, threadable - suitable for the Rontron-R-Juwel</p> <p>Colour aluminum stainless steel, polished</p>	<p>SDAL22RR SDVA22RR</p>
		<p>Universal lens remover</p>	<p>USK</p>
		<p>Dummy</p> <p>to close unused mounting apertures</p> <p>Colour silver-coloured charcoal</p>	<p>BVJRM BVJR</p>

About Us

→ Pushbuttons and Switches

Panel Mount Jacks

Emergency-Stop Buttons

Bus Technology

RFID

Enclosures

Pedal Switches

Terminal Blocks

Type Index







Georg Schlegel GmbH & Co. KG
Kapellenweg 4
88525 Dürmentingen / **Germany**
Tel.: +49 (0)7371 / 502-0
Fax: +49 (0)7371 / 502 49
E-Mail: info@schlegel.biz
www.schlegel.biz



Subsidiaries:



Schlegel Elektrokontakt GmbH
Schönbachstr. 93
04299 Leipzig / **Germany**
Tel.: +49 (0)341 / 8 68 72-0
Fax: +49 (0)341 / 8 68 72 43
E-Mail: leipzig@schlegel.biz
www.schlegel.biz



Georg Schlegel Vertriebs Ges.mbH
Samuel Morse-Straße 7
2700 Wiener Neustadt / **Austria**
Tel.: +43 (0)2622 / 81313
Fax: +43 (0)2622 / 81313-19
E-Mail: schlegel@schlegel.at
www.schlegel.at

